



1.21

DEPARTMENT OF  
FINANCE

PROCUREMENT SERVICES DIVISION

CITY OF SACRAMENTO  
CALIFORNIA

June 23, 1998

PS:Admin:98034:RBH:SA:ct

5730 - 24TH STREET  
BUILDING FOUR  
SACRAMENTO, CA  
95822-3699

PH 916-433-6240  
FAX 916-399-0263

City Council  
Sacramento, California

Honorable Members in Session:

**SUBJECT: SUSPENSION OF FORMAL COMPETITIVE BIDDING FOR THE PURCHASE OF  
A 105 FOOT AERIAL LADDER FIRE TRUCK IN A TOTAL AMOUNT NOT TO  
EXCEED \$493,112.49**

**LOCATION AND COUNCIL DISTRICT:** City-wide; All districts

**RECOMMENDATION:**

Staff recommends that the City Council adopt the attached Resolution which suspends formal competitive bidding for the purchase of a 105 foot aerial ladder fire truck. The Resolution also authorizes the City Manager to accept the results of informal requests for quotation and to execute the necessary purchase from Pierce Manufacturing, Inc., 2600 American Drive, Appleton, WI 54913, in a total amount not to exceed \$493,112.49.

**CONTACT PERSONS:** Robert Summersett, Fleet Management Superintendent, 433-6309  
Steve Alstrom, Senior Buyer, 433-6343

**FOR THE COUNCIL MEETING OF:** June 23, 1998

**SUMMARY:**

The Maintenance Services Division (Fleet Operations) of the Department of Public Works has a requirement to replace an aerial ladder fire truck for the Fire Department. This report recommends that the City Council suspend formal competitive bidding for the purchase of this truck and accept the results of informal requests for quotation in order to obtain the truck in an expeditious time frame.

**BACKGROUND:**

At the request of the Fire Department and Maintenance Services Division (Fleet Operations), City Council authorized the sale of City Equipment 5586, a 1986 fire truck. This unit no longer met the needs of the Fire

①



Department due to its large size that limited which stations it could be parked in and because it had a pump and hose bed that severely limited the compartment space and equipment carrying capacity. However, the Galt Fire District was looking for this type of unit, and the revenue received from them was more than the City could expect to receive through sale by public auction.

Since the sale of City Equipment 5586, a reserve truck has been placed into front line service. The reserve truck is older and does not meet all of the demands of the Fire Department on an ongoing basis, is more subject to breakdown, and is costly to maintain and operate. The Fire Department has requested Fleet Operations to provide a replacement unit as quickly as possible that is smaller in overall size, includes a waterway with remote nozzle, and greater compartmentation that is more appropriate for their current broader scope of use.

Fleet Operations is aware of only three companies that manufacture complete cab and chassis, body, and aerial devices. The Fire Department and Fleet Operations agree that on this type of complex emergency fire apparatus, only those manufacturers offering the complete unit should be considered. Informal requests for proposals were solicited from these three manufacturers for an available demonstration unit, a stock unit, or one that could be quickly built. None of the manufacturers had demonstration units or stock units available for immediate delivery. All units must be manufactured.

The results of the solicitation are as follows:

<u>Vendor</u>	<u>Price</u>	<u>Delivery</u>
Pierce Manufacturing, Inc.	<u>\$493,112.49</u>	210 days
Emergency One, Inc.	\$495,520.70	180-210 days
Allstar Fire Equipment, Inc./ Seagrave Fire Apparatus	\$500,118.39	260 days

Of the three proposals received, Pierce Manufacturing, Inc. offered the lowest cost proposal meeting the City's requirements. Staff, therefore, requests authorization to purchase this aerial truck.

**FINANCIAL CONSIDERATIONS:**

Sufficient funds are available for this purchase in the Maintenance Services Division's (Fleet Operations) FY 97/98 budget line for replacement vehicles.

**ENVIRONMENTAL CONSIDERATIONS:**

Ongoing administrative and maintenance activities, such as purchases of supplies, equipment or materials which are not made for purposes of a public works construction project, do not constitute a "project" and are exempt from the California Environmental Quality Act (CEQA). CEQA Guidelines, Sections 15061(b)(1), 15783(b)(3).

**POLICY CONSIDERATIONS:**

This recommendation is in accordance with the provisions of City Code Section 57.04.401(c), which authorizes suspension of formal competitive bidding upon a two-thirds vote of the City Council.

**MBE/WBE EFFORTS:**

Pierce Manufacturing, Inc. is not a minority/women business enterprise. No M/WBE firms are known or listed in the City Bid Directory that manufacture or distribute this type of fire protection equipment.


Respectfully Submitted,



Robert B. Holbrook  
Procurement Services Manager

**RECOMMENDATION APPROVED:**



 WILLIAM H. EDGAR  
City Manager

1 Attachment

**RESOLUTION NO.**

ADOPTED BY THE SACRAMENTO CITY COUNCIL

ON DATE OF \_\_\_\_\_

**A RESOLUTION SUSPENDING FORMAL COMPETITIVE BIDDING  
FOR THE PURCHASE OF A 105 FOOT AERIAL LADDER FIRE TRUCK  
IN A TOTAL AMOUNT NOT TO EXCEED \$493,112.49**

**BE IT RESOLVED BY THE COUNCIL OF THE CITY OF SACRAMENTO THAT:**

1. In the best interest of the City of Sacramento, formal competitive bidding is hereby suspended for the purchase of a 105 foot aerial ladder fire truck, and;
2. The City Manager is hereby authorized to accept the results of informal requests for quotation and to execute the necessary purchase from Pierce Manufacturing, Inc., 2600 American Drive, Appleton, WI 54913, in a total amount not to exceed \$493,112.49.

\_\_\_\_\_  
MAYOR

ATTEST:

\_\_\_\_\_  
CITY CLERK

**FOR CITY CLERK USE ONLY**

RESOLUTION NO.: \_\_\_\_\_

DATE ADOPTED: \_\_\_\_\_

(4)





1-8

CITY OF SACRAMENTO

DEPARTMENT OF  
NEIGHBORHOODS, PLANNING AND DEVELOPMENT

CALIFORNIA

1231 I STREET  
ROOM 300  
SACRAMENTO, CA  
95814-2998

PH 916-264-5381  
FAX 916-264-5328

September 22, 1997

City Council  
Sacramento, California

Honorable Members In Session:

**SUBJECT:** APPROVAL OF PLANS AND SPECIFICATIONS, ACCEPTANCE OF BID AND CONTRACT AWARD FOR THE LAGUNA CREEK WETLAND REMEDIATION PROJECT (15AD)

**LOCATION AND COUNCIL DISTRICT:**

Regional Sanitation District Buffer Lands, South Sacramento - Council District #8

**RECOMMENDATION:**

This report recommends that the City Council:

- Adopt the attached Resolution ratifying the Negative Declaration and approving the Mitigation Monitoring Plan;
- Approve the plans and specifications;
- Accept the bid of Hodgson General Engineering Contractors, Inc. in the amount of \$209,135; and
- Adopt the attached Resolution authorizing the City Manager to execute a contract for the Laguna Creek Wetland Remediation Project (15AD).

**CONTACT PERSON:** Joe Broadhead, Project Manager, 264-7622

**FOR COUNCIL MEETING OF:** September 30, 1997





## **SUMMARY:**

In 1988, the City constructed the Laguna Creek Wetlands Restoration Project (Wetlands Project) in conjunction with the modification of the Laguna Creek Floodway. The Wetlands Project was a condition of the Water Quality Permit (404 Permit) received by the City from the U.S. Army Corps of Engineers (Corps) due to wetlands impacted from the construction of surrounding residential subdivisions. A portion of the Wetlands Project included the construction of vernal pools on the Regional Sanitation District Buffer Lands located immediately west of Franklin Boulevard. The 404 Permit required that the City monitor the constructed wetlands for an initial period of five years and, if further remediation was required, a secondary monitoring period would follow any additional remediation efforts implemented. In 1996, the Corps concluded that the 19± acres of constructed vernal pool wetlands were non-functioning. To compensate for these non-functioning wetlands, the Corps is requiring that 19± acres be converted to shallow seasonal wetlands for shorebird habitat to be linked hydraulically to existing Regional Sanitation District wetlands located immediately south of the project site.

The City has worked with various agencies including the Corps, U.S. Fish and Wildlife Service, Department of Fish and Game and the Regional Sanitation District to explore feasible remediation options. In addition, City staff have met with representatives of the North Laguna Creek Neighborhood Association to discuss the proposed plans.

The final plans include a design that will result in an adequate supply of water to the project site. To achieve this, the City has teamed up with the Regional Sanitation District (District) to link the project site hydraulically with the District's wetlands located immediately south of the project site. The final plans include the construction of a gravity flow channel in the northwestern end of the District's wetlands. The channel will flow from the lake to the eastern end of the City's project area.

## **COMMITTEE/COMMISSION ACTION:**

NONE.

## **BACKGROUND INFORMATION:**

- Remediation of constructed wetlands as part of the Laguna Creek Wetland Mitigation Project was authorized in the establishment of the Laguna Creek Maintenance District (15AD) in July 1988.
- The City Council Certified the Laguna Creek Floodway Improvement EIR in 1988 that resulted in the need for the Laguna Creek Maintenance District to finance the wetlands restoration project.
- This project was advertised and bids were received on July 16, 1997 and are summarized below:

Contractor	Bid Amount	MBE Participation Goal 10.57%	WBE Participation Goal 9.5%	Good Faith Effort
Hodgson General Eng. Cont., Inc.	\$209,135	7.02%	5.26%	Yes
Syblon-Reid Co.	\$244,967	10.51%	11.86%	*
Azteca Const., Inc.	\$245,840	90.50%	9.50%	*
Sierra View Landscape, Inc.	\$249,686	6.25%	22.40%	*
Gabe Mendez, Inc.	\$322,751	90.20%	9.80%	*
* Not Analyzed				

- Hodgson General Engineering Contractors, Inc. met the MBE/WBE good faith efforts and is the lowest responsible bidder.
- The construction estimate for the Laguna Creek Wetland Reconstruction project is \$209,135.00.
- Approval of the plans and specifications and award to Hodgson General is recommended.

**FINANCIAL CONSIDERATIONS:**

- The fund balance in the Laguna Creek Maintenance District (15AD) is \$665,600.
- The unobligated fund balance as of September 30, 1997 is \$665,600, which is sufficient for award of \$209,135.00.
- The City's Office of Environmental Affairs has submitted a CalFed Grant application for the proposed project. Successful applicants are expected to be notified by late November. If successful, the \$209,135.00 will be reimbursed to 15AD.

**ENVIRONMENTAL CONSIDERATIONS:**

The City's Office of Environmental Affairs prepared a Negative Declaration for this project. The public comment period closed on August 16, 1997. No comments were received.

**POLICY CONSIDERATIONS:**

The action requested herein is consistent with Sacramento City Code, Title 58. The City will enter into a side agreement with the Regional Sanitation District for maintenance purposes. This side agreement will be consistent with the existing City Agreement 87279.

**MBE/WBE EFFORTS:**

To encourage minority participation, plans and specifications were sent to 10 plan rooms and construction services organization for publication. Four are directly involved with MBE/WBE construction firms. Project notices were sent to 30 organizations involved in MBE/WBE recruitment.

Respectfully submitted,

*Fred Buder*

Fred Buder  
Senior Planner

RECOMMENDATION APPROVED:

Approved:

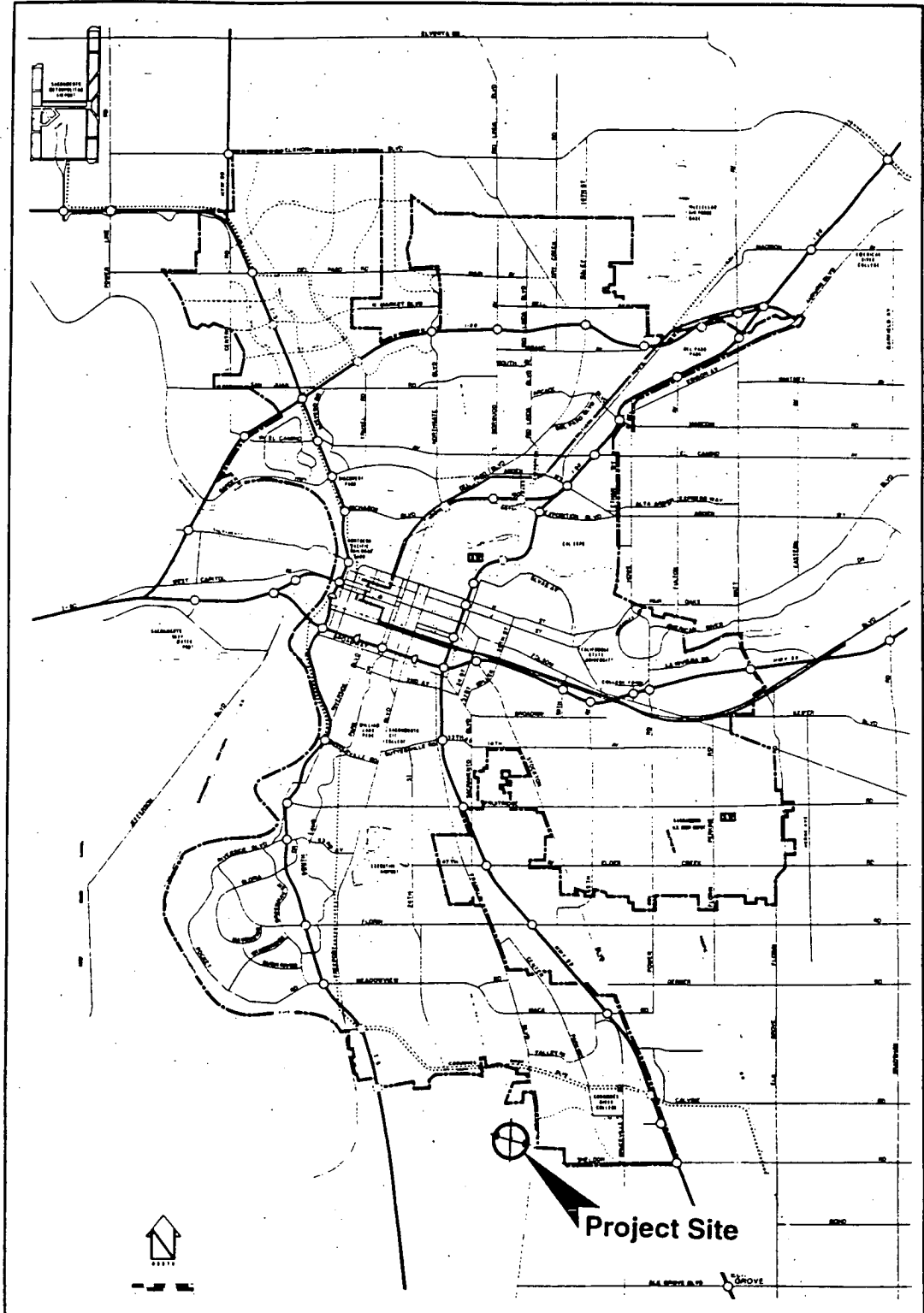
*Wm H. Edgar*

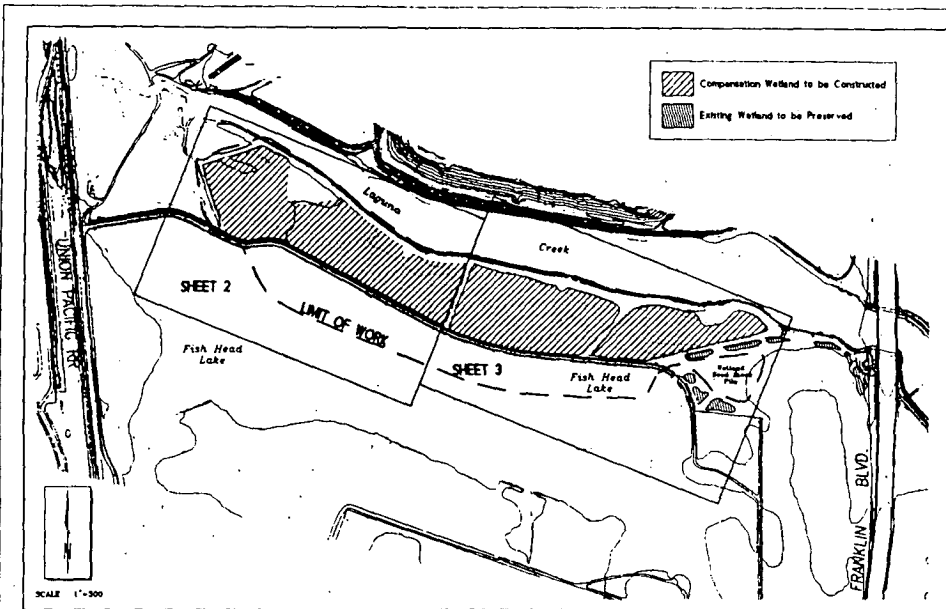
WILLIAM H. EDGAR  
City Manager

*Jack Crist*

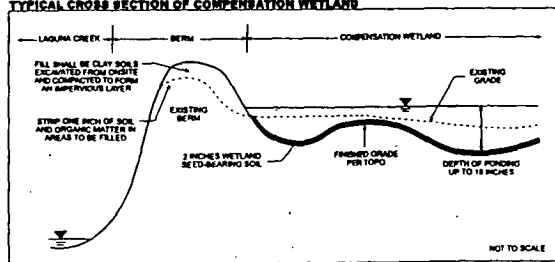
Jack Crist  
Deputy City Manager

**FIGURE 1**  
**Project Location**

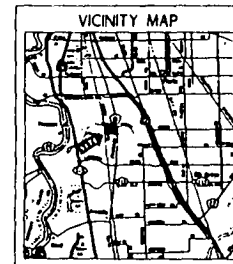
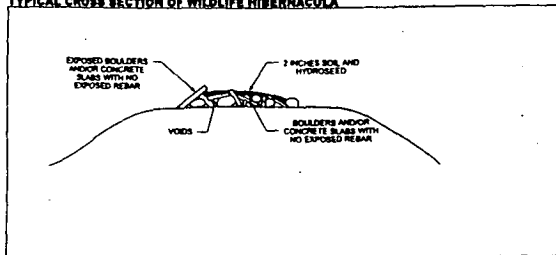




**TYPICAL CROSS SECTION OF COMPENSATION WETLAND**



**TYPICAL CROSS SECTION OF WILDLIFE HIBERNACULA**



**SHEET INDEX**

1. Title Sheet
2. Grading Plan
3. Grading Plan
4. Details and Notes

**KEY**

- Existing Contour
- Proposed Contour
- Existing Spot Elevation
- Wildlife Hibernaculum

DATE	28 JUNE 1998	Original notes were provided by the Marinette County Dept. of Public Works, Water Quality Division
DRAWN BY	LRW/AS/CLS	
CHECKED BY		
FILE NAME	LC-281.DWG	
REVISION	1, 2, 3, 4	

*Claudia A. Forstner*  
 Claudia A. Forstner, RCEPC 50190  
 Sugnet & Associates



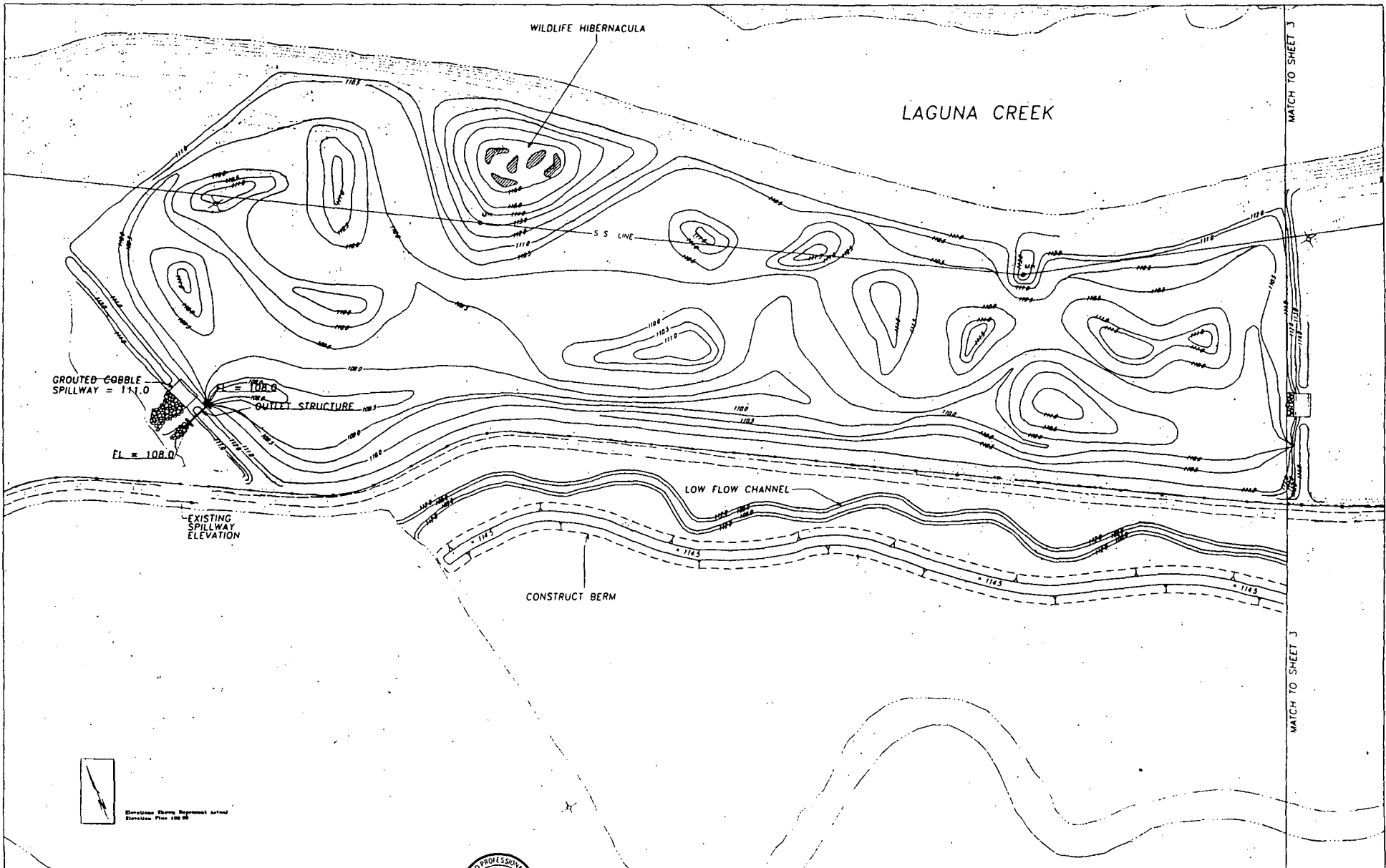
**-LAGUNA CREEK - FISH HEAD LAKE-  
 WETLAND MITIGATION  
 CONSTRUCTION PLAN SET**

JOB NO.	23120
CODE	
DRAW'G NO.	

**TITLE SHEET**

**SUGNET & ASSOCIATES**  
 ENVIRONMENTAL CONSULTANTS  
 8880 JENSEN BOULEVARD, SUITE 100  
 BARTLETT, CALIFORNIA 94003  
 (415) 788-0100

SHEET  
 1  
 OF  
 4



GROUTED COBBLE  
SPILLWAY = 111.0

EL = 108.0

EXISTING  
SPILLWAY  
ELEVATION

111.0  
110.5  
110.0  
109.5  
109.0  
108.5  
108.0  
107.5  
107.0  
106.5  
106.0  
105.5  
105.0  
104.5  
104.0  
103.5  
103.0  
102.5  
102.0  
101.5  
101.0  
100.5  
100.0  
99.5  
99.0  
98.5  
98.0  
97.5  
97.0  
96.5  
96.0  
95.5  
95.0  
94.5  
94.0  
93.5  
93.0  
92.5  
92.0  
91.5  
91.0  
90.5  
90.0  
89.5  
89.0  
88.5  
88.0  
87.5  
87.0  
86.5  
86.0  
85.5  
85.0  
84.5  
84.0  
83.5  
83.0  
82.5  
82.0  
81.5  
81.0  
80.5  
80.0  
79.5  
79.0  
78.5  
78.0  
77.5  
77.0  
76.5  
76.0  
75.5  
75.0  
74.5  
74.0  
73.5  
73.0  
72.5  
72.0  
71.5  
71.0  
70.5  
70.0  
69.5  
69.0  
68.5  
68.0  
67.5  
67.0  
66.5  
66.0  
65.5  
65.0  
64.5  
64.0  
63.5  
63.0  
62.5  
62.0  
61.5  
61.0  
60.5  
60.0  
59.5  
59.0  
58.5  
58.0  
57.5  
57.0  
56.5  
56.0  
55.5  
55.0  
54.5  
54.0  
53.5  
53.0  
52.5  
52.0  
51.5  
51.0  
50.5  
50.0  
49.5  
49.0  
48.5  
48.0  
47.5  
47.0  
46.5  
46.0  
45.5  
45.0  
44.5  
44.0  
43.5  
43.0  
42.5  
42.0  
41.5  
41.0  
40.5  
40.0  
39.5  
39.0  
38.5  
38.0  
37.5  
37.0  
36.5  
36.0  
35.5  
35.0  
34.5  
34.0  
33.5  
33.0  
32.5  
32.0  
31.5  
31.0  
30.5  
30.0  
29.5  
29.0  
28.5  
28.0  
27.5  
27.0  
26.5  
26.0  
25.5  
25.0  
24.5  
24.0  
23.5  
23.0  
22.5  
22.0  
21.5  
21.0  
20.5  
20.0  
19.5  
19.0  
18.5  
18.0  
17.5  
17.0  
16.5  
16.0  
15.5  
15.0  
14.5  
14.0  
13.5  
13.0  
12.5  
12.0  
11.5  
11.0  
10.5  
10.0  
9.5  
9.0  
8.5  
8.0  
7.5  
7.0  
6.5  
6.0  
5.5  
5.0  
4.5  
4.0  
3.5  
3.0  
2.5  
2.0  
1.5  
1.0  
0.5  
0.0  
-0.5  
-1.0  
-1.5  
-2.0  
-2.5  
-3.0  
-3.5  
-4.0  
-4.5  
-5.0  
-5.5  
-6.0  
-6.5  
-7.0  
-7.5  
-8.0  
-8.5  
-9.0  
-9.5  
-10.0  
-10.5  
-11.0  
-11.5  
-12.0  
-12.5  
-13.0  
-13.5  
-14.0  
-14.5  
-15.0  
-15.5  
-16.0  
-16.5  
-17.0  
-17.5  
-18.0  
-18.5  
-19.0  
-19.5  
-20.0  
-20.5  
-21.0  
-21.5  
-22.0  
-22.5  
-23.0  
-23.5  
-24.0  
-24.5  
-25.0  
-25.5  
-26.0  
-26.5  
-27.0  
-27.5  
-28.0  
-28.5  
-29.0  
-29.5  
-30.0  
-30.5  
-31.0  
-31.5  
-32.0  
-32.5  
-33.0  
-33.5  
-34.0  
-34.5  
-35.0  
-35.5  
-36.0  
-36.5  
-37.0  
-37.5  
-38.0  
-38.5  
-39.0  
-39.5  
-40.0  
-40.5  
-41.0  
-41.5  
-42.0  
-42.5  
-43.0  
-43.5  
-44.0  
-44.5  
-45.0  
-45.5  
-46.0  
-46.5  
-47.0  
-47.5  
-48.0  
-48.5  
-49.0  
-49.5  
-50.0  
-50.5  
-51.0  
-51.5  
-52.0  
-52.5  
-53.0  
-53.5  
-54.0  
-54.5  
-55.0  
-55.5  
-56.0  
-56.5  
-57.0  
-57.5  
-58.0  
-58.5  
-59.0  
-59.5  
-60.0  
-60.5  
-61.0  
-61.5  
-62.0  
-62.5  
-63.0  
-63.5  
-64.0  
-64.5  
-65.0  
-65.5  
-66.0  
-66.5  
-67.0  
-67.5  
-68.0  
-68.5  
-69.0  
-69.5  
-70.0  
-70.5  
-71.0  
-71.5  
-72.0  
-72.5  
-73.0  
-73.5  
-74.0  
-74.5  
-75.0  
-75.5  
-76.0  
-76.5  
-77.0  
-77.5  
-78.0  
-78.5  
-79.0  
-79.5  
-80.0  
-80.5  
-81.0  
-81.5  
-82.0  
-82.5  
-83.0  
-83.5  
-84.0  
-84.5  
-85.0  
-85.5  
-86.0  
-86.5  
-87.0  
-87.5  
-88.0  
-88.5  
-89.0  
-89.5  
-90.0  
-90.5  
-91.0  
-91.5  
-92.0  
-92.5  
-93.0  
-93.5  
-94.0  
-94.5  
-95.0  
-95.5  
-96.0  
-96.5  
-97.0  
-97.5  
-98.0  
-98.5  
-99.0  
-99.5  
-100.0

WILDLIFE HIBERNACULA

LAGUNA CREEK

S S LINE

LOW FLOW CHANNEL

CONSTRUCT BERM

MATCH TO SHEET 3

MATCH TO SHEET 3



Vertical Datum Represents Actual  
Elevation Plus 100.00

DATE	24 JULY 1994				
DRAWN BY	AM/RS/JSW				
CHECKED BY					
DATE					
SCALE	1" = 100'				

*Charles A. Herington*  
Charles A. Herington, P.E. R. 50190  
Sugnet & Associates



-LAGUNA CREEK - FISH HEAD LAKE-  
WETLAND MITIGATION  
CONSTRUCTION PLAN SET

JOB NO. 23120  
CODE  
DRAWING NO.

GRADING PLAN

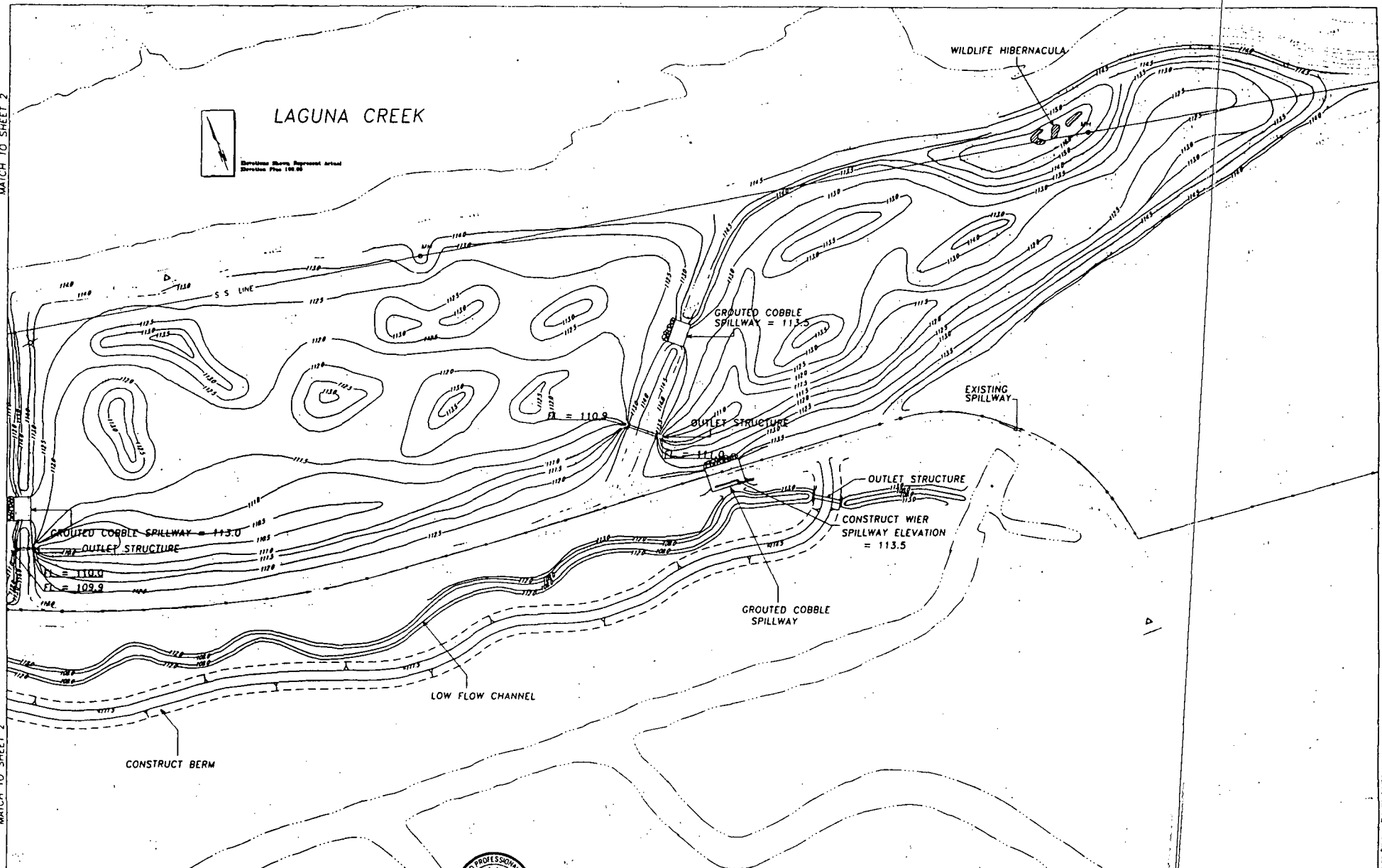
**SUGNET & ASSOCIATES**  
ENVIRONMENTAL CONSULTANTS

SHEET 2 OF 4

7

MATCH TO SHEET 2

MATCH TO SHEET 2



# LAGUNA CREEK



Sectional Views Represent Actual  
Surface Plus 100.00

DATE	BY	REV	DESCRIPTION
08/15/04	AMW/AS/AS		
DESIGN BY	AMW/AS/AS		
CHECKED BY	AMW/AS/AS		
FILE NAME	LAG MITG 020		
REVISION	8/17/04		
SCALE	1"=50'		

*Charles A. Heringer*  
 Charles A. Heringer, RCE PC 50190  
 Sugnet & Associates



**-LAGUNA CREEK - FISH HEAD LAKE-  
 WETLAND MITIGATION  
 CONSTRUCTION PLAN SET**

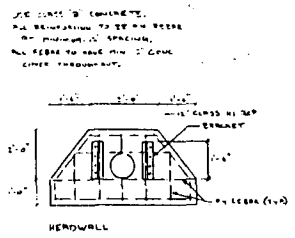
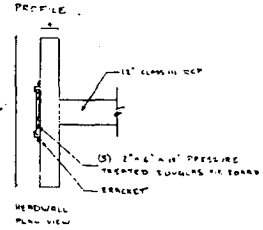
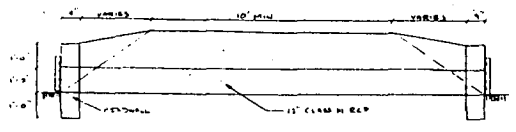
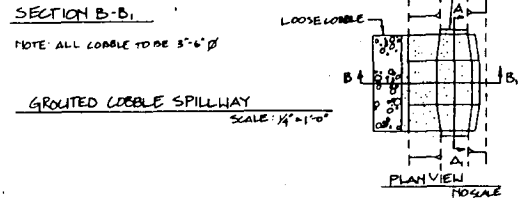
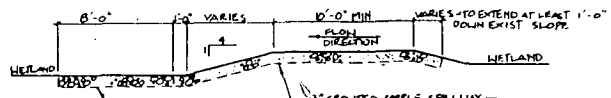
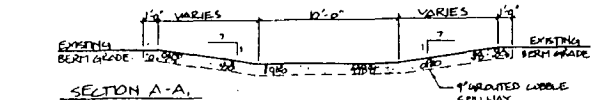
JOB NO.	53100
CODE	
DRAW'G NO.	

**GRADING PLAN**

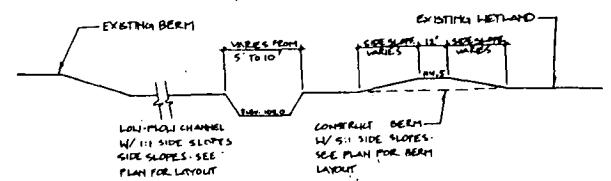
**SUGNET & ASSOCIATES**  
 ENVIRONMENTAL CONSULTANTS GROUP  
 1045 BOWLING GREEN DRIVE, SUITE 100  
 BOSTONIA, CALIFORNIA 94022  
 (415) 942-2100

SHEET	3
OF	4

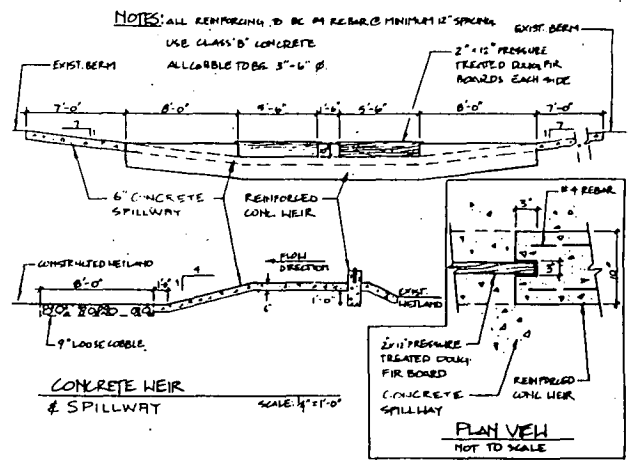
88



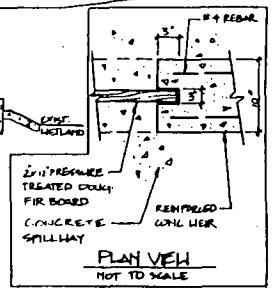
OUTLET STRUCTURE  
NOT TO SCALE



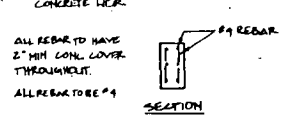
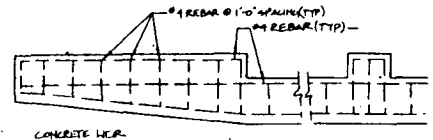
BERM AND LOW-FLOW CHANNEL  
NOT TO SCALE



CONCRETE WEIR & SPILLWAY  
SCALE: 1/4\"/>



PLAN VIEW  
NOT TO SCALE



REBAR PLAN FOR CONCRETE WEIR  
SCALE: 1/4\"/>

DATE	04 JUNE 1998
DRAWN BY	SK/ES
CHECKED BY	
FILE NAME	LC-084.DWG
DATE	
REVISION	
SCALE	

*Claudia A. Heising*  
 Claudia A. Heising, RCE #C 50193  
 SUGNET & ASSOCIATES  
 REGISTERED PROFESSIONAL ENGINEER  
 STATE OF CALIFORNIA  
 05/14/99

LAGUNA CREEK - FISH HEAD LAKE -  
 WETLAND MITIGATION PLAN  
 CONSTRUCTION PLAN SET

JOB NO. 85120  
 CODE  
 DRAWING NO.

DETAILS  
 AND  
 NOTES

**SUGNET & ASSOCIATES**  
 ENVIRONMENTAL CONSULTANTS  
 2880 BROADWAY SUITE 100  
 BOSTON, CALIFORNIA 94021  
 (415) 788-0188

SHEET 4  
 OF 4



**RESOLUTION NO.**

ADOPTED BY THE SACRAMENTO CITY COUNCIL

ON DATE OF \_\_\_\_\_

**RESOLUTION RATIFYING THE LAGUNA CREEK WETLAND REMEDIATION  
NEGATIVE DECLARATION AND APPROVING THE  
LAGUNA CREEK WETLAND REMEDIATION PROJECT**

WHEREAS, the City of Sacramento has determined the need for the Laguna Creek Wetland Remediation Project (hereinafter called the "Project"), and

WHEREAS, the City of Sacramento has conducted an initial study to determine if the Project may have a significant effect on the environment, and

WHEREAS, the Initial Study concludes that there is no substantial evidence that the Project, or any of its aspects, may cause a significant effect on the environment and a Negative Declaration is therefore appropriate, and

WHEREAS, the Initial Study concluded that the Project involves no potential for any adverse effect, either individually or cumulatively on wildlife resources, and

WHEREAS, the City of Sacramento has provided for public review to accommodate response to the proposed Negative Declaration on the Project,

WHEREAS, a Mitigation Reporting Program has been prepared which is designed to ensure compliance with the mitigation measures incorporated into the Project in the Laguna Creek Wetland Remediation Negative Declaration,

**NOW, THEREFORE BE IT RESOLVED BY THE CITY COUNCIL OF THE  
CITY OF SACRAMENTO THAT:**

1. The City Council hereby ratifies and approves the Laguna Creek Wetland Remediation Negative Declaration, finding on the basis of the Initial Study and comments received that there is no substantial evidence that the Project may have a significant effect on the environment.

**FOR CITY CLERK USE ONLY**

RESOLUTION NO.: \_\_\_\_\_

DATE ADOPTED: \_\_\_\_\_

2. The City Council hereby approves the implementation of the Laguna Creek Wetland Remediation Project incorporating those mitigation measures detailed in the Negative Declaration.

3. The City Council hereby finds that there is no evidence before them that the Laguna Creek Wetland Remediation Project, located in Sacramento County, will have any potential for adverse effect on wildlife resources.

4. The City Council hereby adopts the Laguna Creek Wetland Remediation Mitigation Reporting Program to ensure compliance with incorporated mitigation measures during Project implementation.

---

MAYOR

ATTEST:

---

CITY CLERK

---

**FOR CITY CLERK USE ONLY**

RESOLUTION NO.: \_\_\_\_\_

DATE ADOPTED: \_\_\_\_\_

**RESOLUTION NO.**

ADOPTED BY THE SACRAMENTO CITY COUNCIL

ON DATE OF \_\_\_\_\_

**RESOLUTION AUTHORIZING THE CITY MANAGER AND CITY CLERK TO SIGN AND EXECUTE A CONTRACT WITH HODGSON GENERAL ENGINEERING CONTRACTORS, INC. FOR THE LAGUNA CREEK WETLAND REMEDIATION PROJECT - REGIONAL SANITATION DISTRICT BUFFERLANDS (15AD) FOR AN AMOUNT NOT TO EXCEED \$209,135.**

BE IT RESOLVED BY THE SACRAMENTO CITY COUNCIL THAT:

The City Manager and City Clerk are authorized to sign and execute a contract with Hodgson General Engineering Contractors, Inc. For the Laguna Creek Wetland Remediation Project on the Regional Sanitation District Bufferlands (15AD) for an amount not to exceed \$209,135.

\_\_\_\_\_  
MAYOR

ATTEST:

\_\_\_\_\_  
CITY CLERK

**FOR CITY CLERK USE ONLY**

RESOLUTION NO.: \_\_\_\_\_

DATE ADOPTED: \_\_\_\_\_

