



CITY OF SACRAMENTO

October 27th, 1981

REAL ESTATE AND STREET ASSESSMENTS DIVISION

915 J STREET
CITY HALL ROOM 207

SACRAMENTO, CALIFORNIA 95814
TELEPHONE (916) 449-5626

CITY MANAGER'S OFFICE

RECEIVED

IRVIN E. MORAES
REAL ESTATE SUPERVISOR

OCT 21 1981

City Council
Sacramento, California

Honorable Members In Session:

SUBJECT: Lease of Warehouse Space for Police Department
Property Storage

SUMMARY

Requesting authorization to enter into a five year lease with the Southern Pacific Transportation Company for 10,314 square feet of warehouse space located in the Old Railway Express Building at 5th and H Streets.

BACKGROUND INFORMATION

For the past three years the City has been leasing 7,000 square feet of warehouse space from Cook and Oats for \$910.00 per month at 6201 27th Street. This lease expired August 31st of this year and we are presently on a month to month rental until new arrangements can be made.

This location is 7.2 miles from the Court House and Police Station making property storage of stolen material and court evidence items a long and costly travel problem. At the time the 27th Street warehouse was leased, it was used jointly by the Police, Purchasing and Fire Departments and the location was considered adequate. Now it is strictly for police storage.

The Southern Pacific warehouse is only one block from the police station and the lease price is approximately one third the cost of any other location we could find in our study.

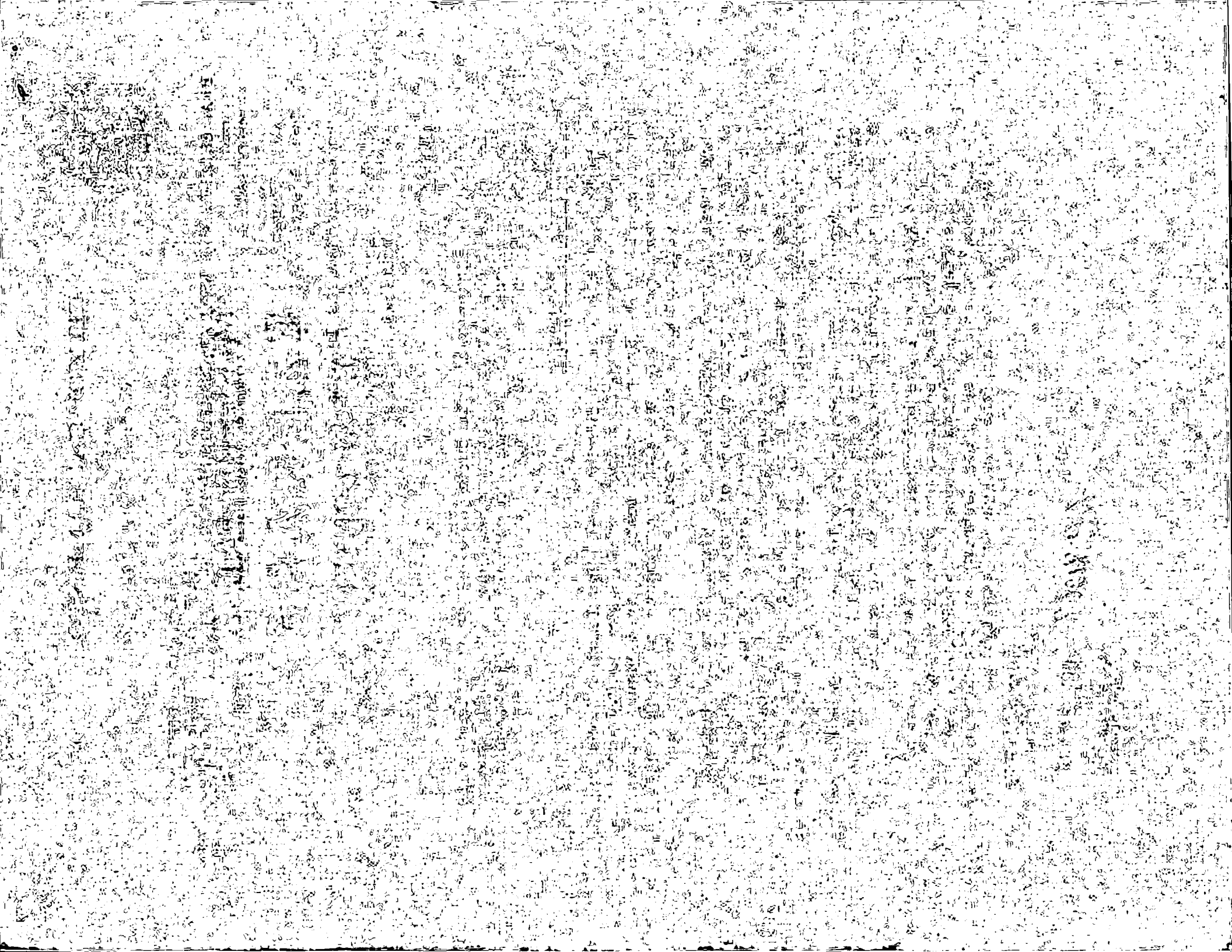
Over and above the lease price will be an initial cost of securing the building, adding minor partitions and installing an alarm system at an estimated cost of \$5,800.00. Because of the location and lease price Southern Pacific warehouse is believed to be, by far, the best choice available.

APPROVED
BY THE CITY COUNCIL

AC 81067

OCT 27 1981

OFFICE OF THE
CITY CLERK



The new lease calls for a monthly rental rate of \$516.00 and a term of five years.

FINANCIAL DATA

There are sufficient funds in the Police Department budget to handle the initial cost of \$5,800.00 for minor partitions and an alarm system and \$4,128.00 rental cost for the remaining 8 months of the 1981-82 fiscal year.

RECOMMENDATION

It is recommended that the attached Resolution authorizing the City Manager and City Clerk to execute the attached lease be adopted.

Respectfully submitted,



R. H. Parker
City Engineer

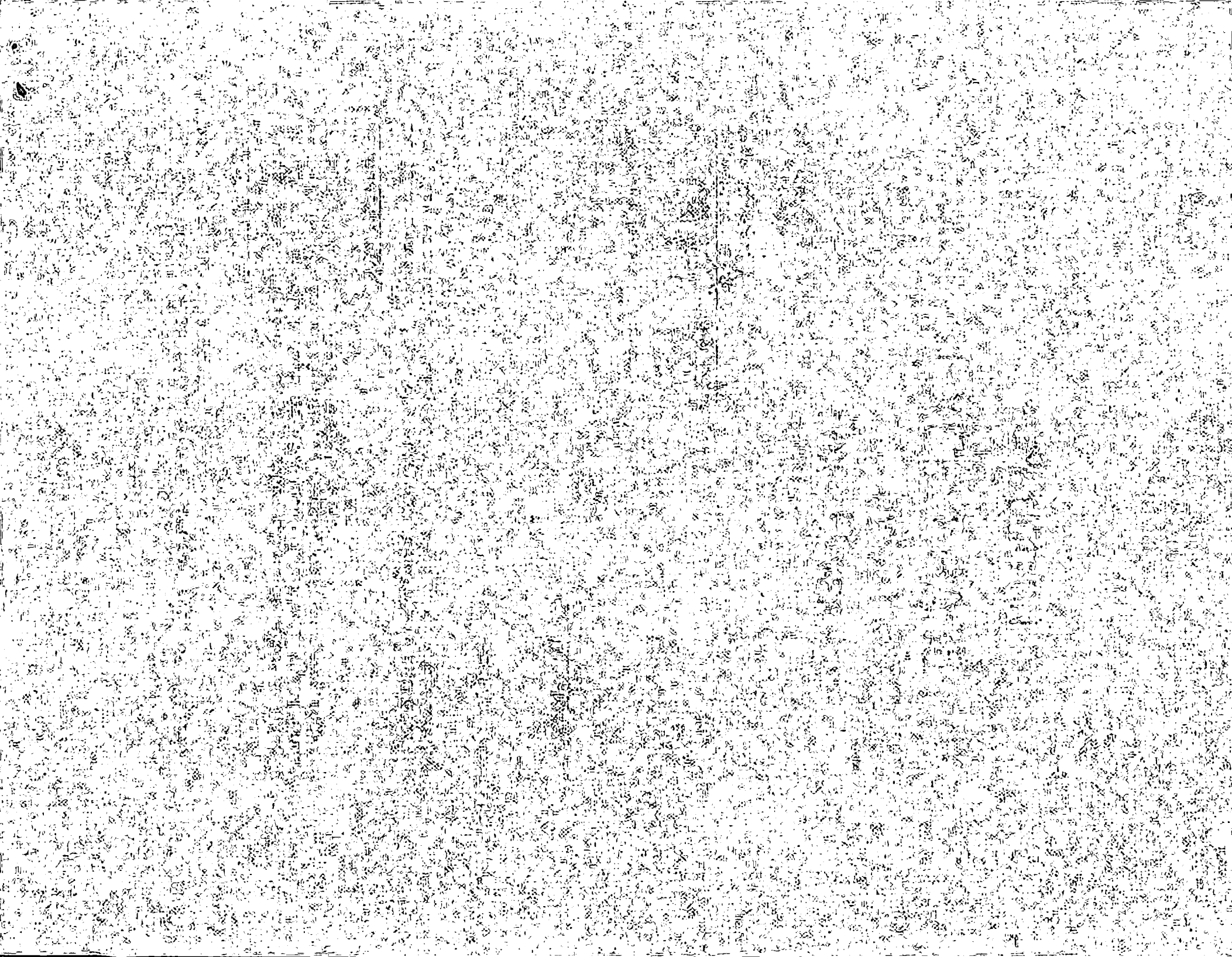
Recommendation Approved



Walter J. Slive
City Manager

RHP:MAS:bb
Attachments

October 27th, 1981
DISTRICT NO. 1



RESOLUTION NO. 81-776

ADOPTED BY THE SACRAMENTO CITY COUNCIL ON DATE OF

OCTOBER 27, 1981

AUTHORIZING CITY MANAGER AND CITY CLERK
TO EXECUTE LEASE WITH SOUTHERN PACIFIC
TRANSPORTATION COMPANY FOR WAREHOUSE
SPACE AT 5TH AND H STREETS

BE IT RESOLVED BY THE CITY COUNCIL OF THE CITY OF SACRAMENTO:

That the City Manager and City Clerk are hereby authorized to execute a lease for the Easterly 10,314 square feet of the old Railway Express Building at 5th and H Streets, to be used as a property storage area for the Sacramento Police Department. The lease term to be for five years at a monthly rental rate of \$516.00.

MAYOR

ATTEST:

CITY CLERK

APPROVED
BY THE CITY COUNCIL

OCT 27 1981

OFFICE OF THE
CITY CLERK

