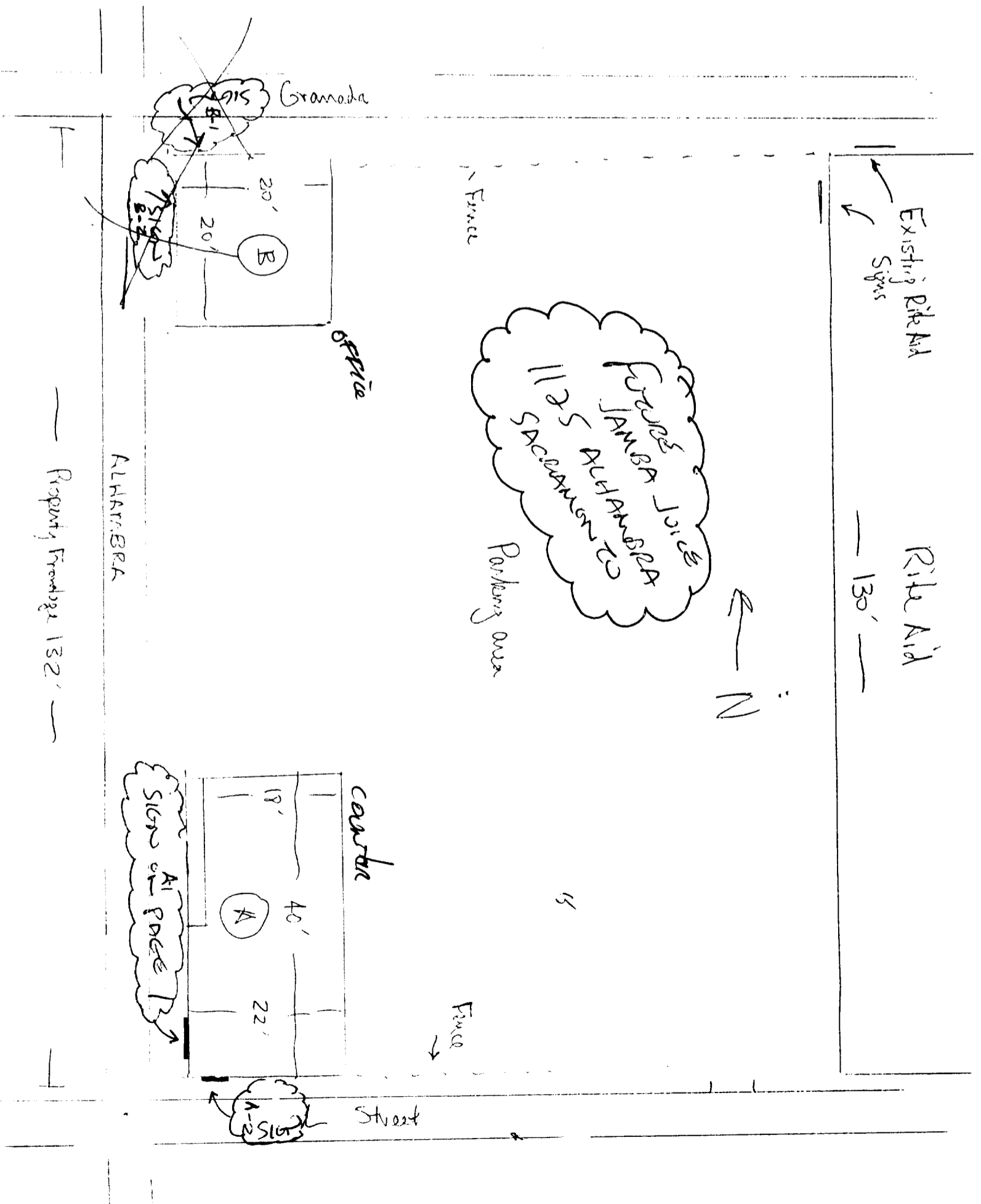
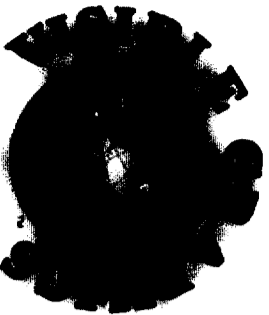


This set of plans and specifications must be kept on the job at all times and it is unlawful to make any changes or alterations from the same without written permission from the City of Sacramento Sign Section. The approval of this plan and specification shall not be held to permit or approve the violation of any City Ordinance or State Law.

All electrical work must be installed in accordance with the National Electrical Code, 1999 Edition, as amended, and all other applicable standards, N.E.C. Sec. 90.57 and comply with chapter 14, Div. 2 of Sacramento City Code.
EQUIPMENT MUST BE USED AS DESIGN INTENDED
ALL SIGN INSTALLATIONS ARE SUBJECT TO FIELD INSPECTIONS



FILE COPY



COMMUNICATING TO THE WORLD
YOUR MESSAGE TO THE WORLD

15216 Burbank Blvd., Ste. 102
Van Nuys, CA 91411-2708

818 787-0477
Fax: 818 787-0415

Sign Type Face and Halo Lit Channel Letters

Item _____ Option _____

Quantity 1 Set

Scale NTS

Project Jamba Juice/ Sacramento, CA

Date 12-20-00

Design No. VGJJ122020

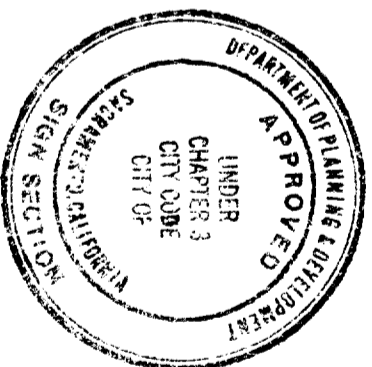
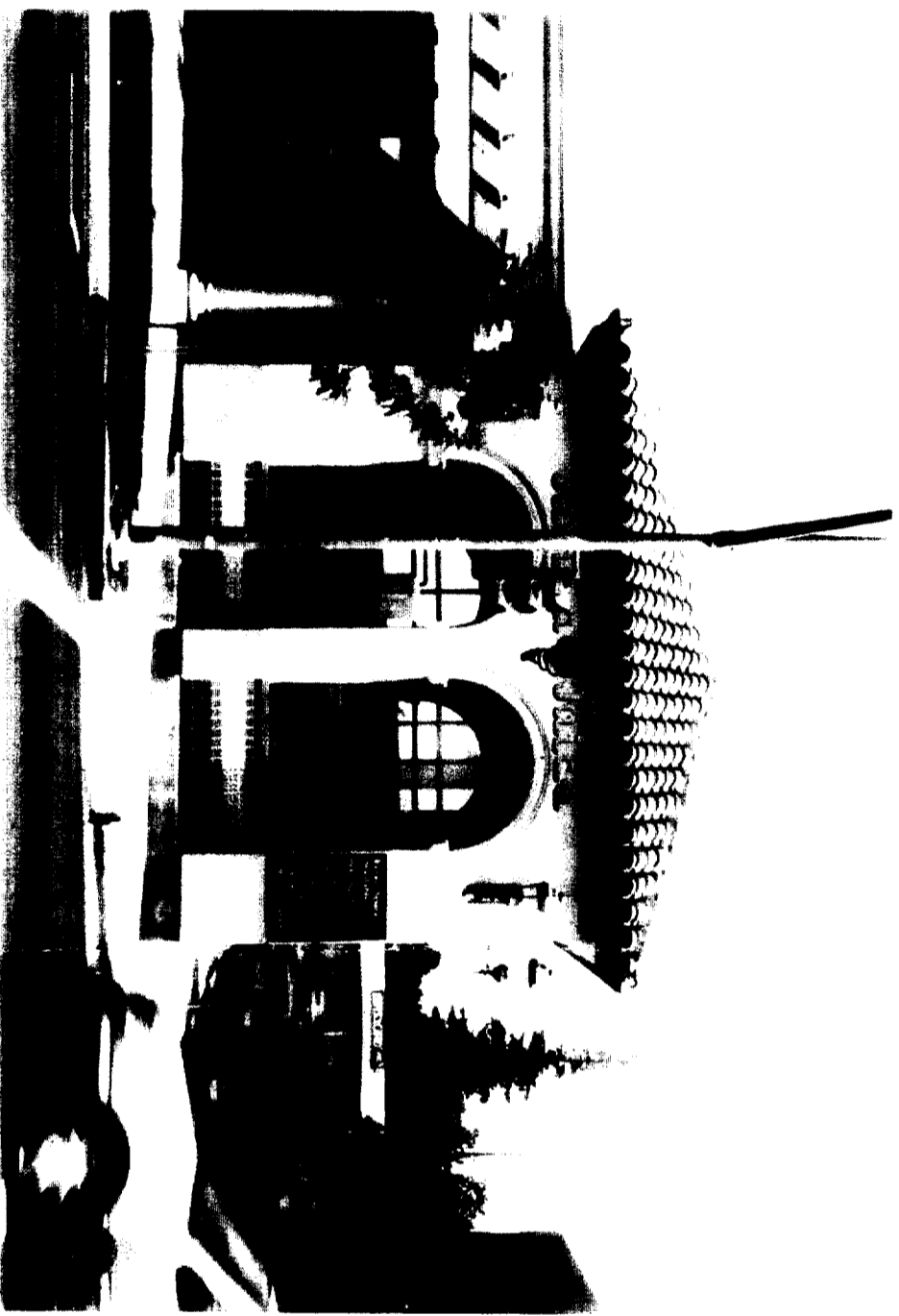
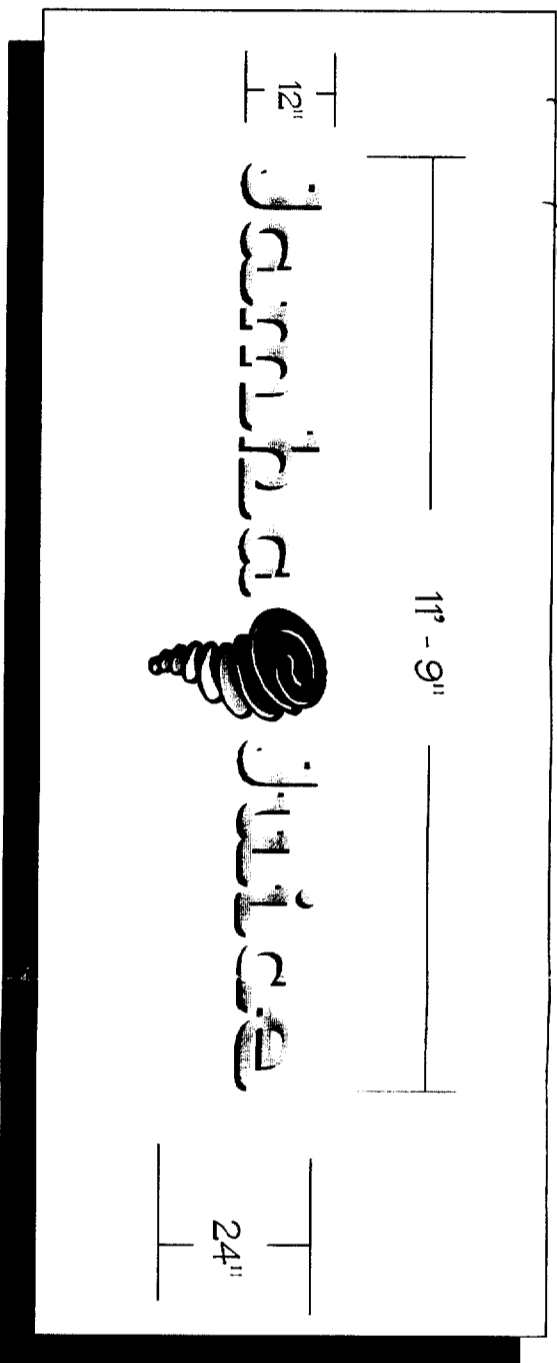
Page 1 of 2

Approved Date _____

This drawing is an original piece of art work and is owned by Visible Graphics. It was designed for your personal use as part of a project being designed for you by Visible Graphics. This artwork is not to be duplicated in any way without the permission of Visible Graphics.



Sign Type A-I

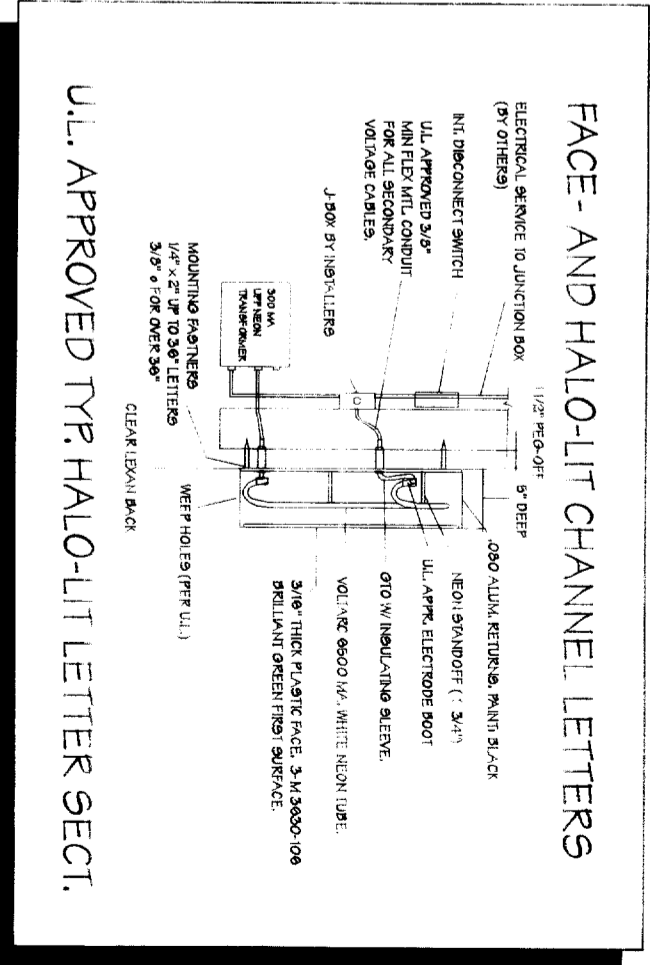


This set of plans and specifications must be kept on the job at all times and it is unlawful to make any changes or alterations from the same without written permission from the City of Sacramento Sign Section.
The approval of this sign and specification SHALL NOT be held to permit or approve the violation of any City Ordinance or State Law.

All electrical work must be U.L. labeled or be of equivalent standards, N.E.C. Sec. 90-5/and comply with chapter 14, Div. 2 of Sacramento City Code.

EQUIPMENT MUST BE USED AS DESIGN INTENDED
ALL SIGN INSTALLATIONS ARE SUBJECT TO FIELD INSPECTIONS

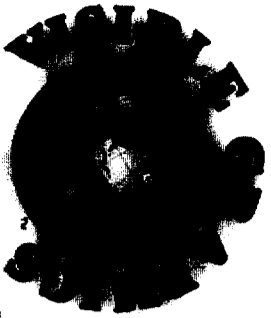
1-8-01 [Signature]



FACE- AND HALO-LIT CHANNEL LETTERS

U.L. APPROVED TYP. HALO-LIT LETTER SECT.

Sign Circuit Permit # 0011995



COMMUNICATING TO THE WORLD
YOUR MESSAGE TO THE WORLD

15216 Burbank Blvd., Ste. 102
Van Nuys, CA 91411-2708

818 787-0477
Fax: 813 787-0415

Sign Type Face and Halo Lit Channel Letters

Item _____ Option _____

Quantity 1 Set

Scale NTS

Project: Jamba Juice/ Sacramento, CA

Date 12 - 20 - 00

Design No VGJU22020

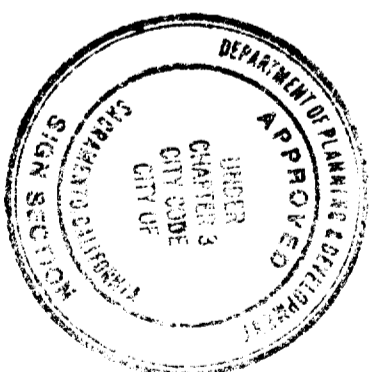
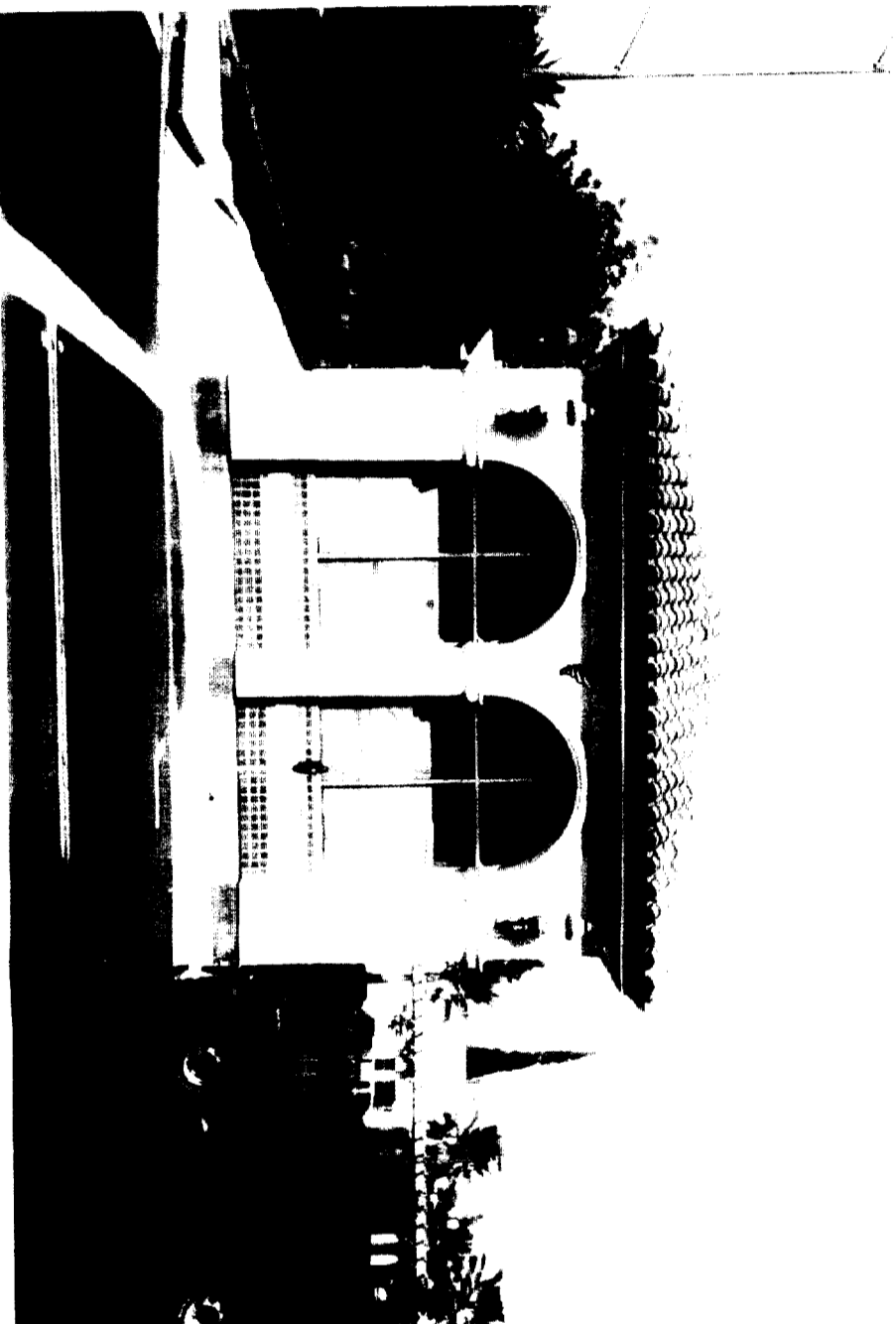
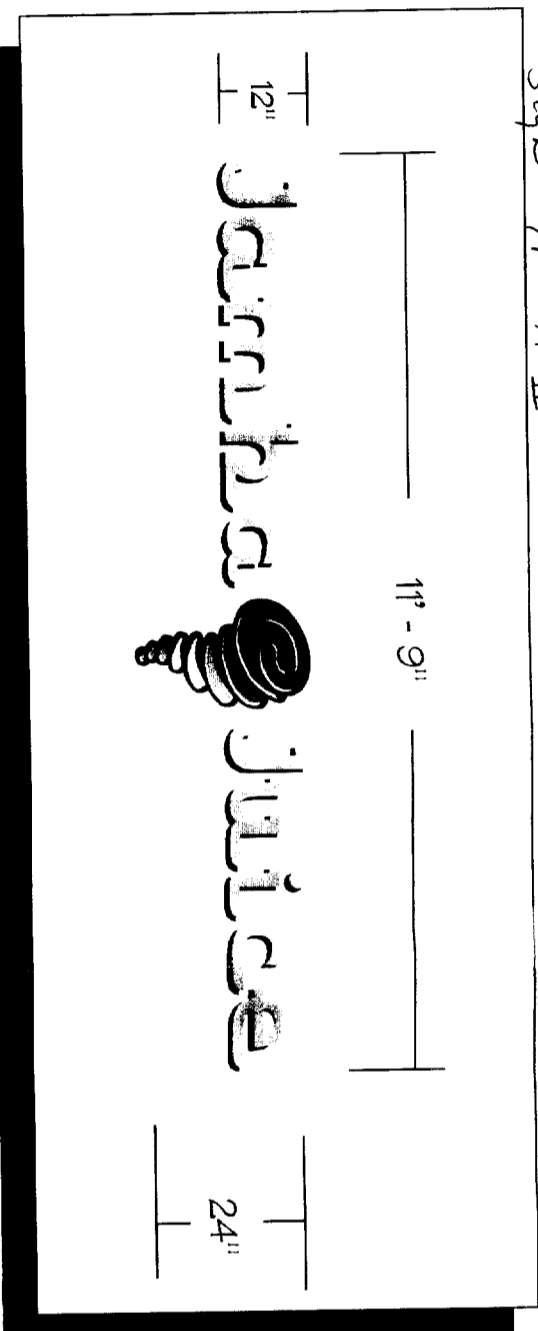
Page 2 of 2

Approved Date _____

This drawing is an original piece of art work and is owned by Visible Graphics. It was designed for your personal use as part of a project being designed for you by Visible Graphics. This artwork is not to be duplicated in any way without the permission of Visible Graphics



Sign Type A-II

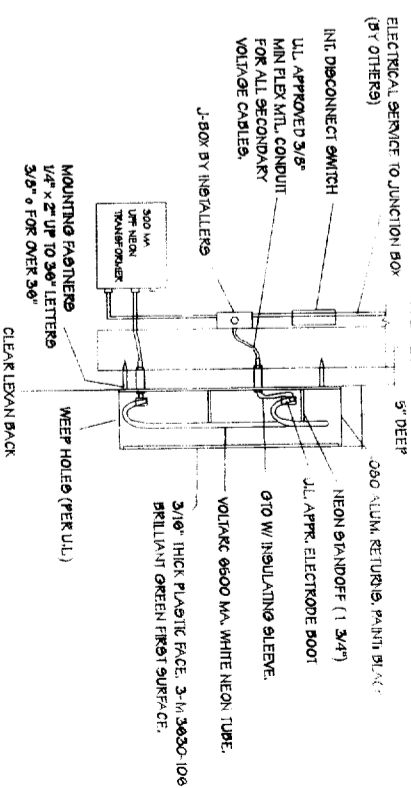


This set of plans and specifications must be kept on the job at all times and it is unlawful to make any changes or alterations from the same without written permission from the City Department Sign Section.
The approval of this plan and specification SHALL NOT be held to permit or approve the violation of any City Ordinance or State Law.

All electrical work must be U.L. labeled or be of equivalent standards, N.E.C. Sec. 90-6/ and comply with chapter 14, Div. 2 of Sacramento City Code.
EQUIPMENT MUST BE USED AS DESIGN INTENDED
ALL SIGN INSTALLATIONS ARE SUBJECT TO FIELD INSPECTIONS

1-8-01 [Signature]

FACE- AND HALO-LIT CHANNEL LETTERS



U.L. APPROVED TYP. HALO-LIT LETTER SECT.

Signs Circuit Permit # 0211975