



# REPORT TO COUNCIL

## City of Sacramento

915 I Street, Sacramento, CA 95814-2604  
 www. CityofSacramento.org

CONSENT  
 September 23, 2008

Honorable Mayor and  
 Members of the City Council

**Title:** Reichmuth Park Master Plan Change (L19153000)

**Location/Council District:** 6135 Gloria Drive / Council District 4

**Recommendation:** Adopt a **Resolution** approving the changes to the Reichmuth Park Master Plan.

**Contact:** J.P. Tindell, Park Planning and Development Manager, 808-1955

**Presenters:** Not applicable

**Department:** Parks and Recreation

**Division:** Park Planning & Development Services

**Organization No:** 19001121

### Description/Analysis

**Issue:** Reichmuth Park is a 42.1-acre community park in South Land Park located at 6135 Gloria Drive. Long-term designs of public facilities and park names are to be reviewed and approved by the Mayor and City Council. A summary of the Reichmuth Park project history is included as Attachment 1 (page 4) and a location map is included as Attachment 2 (page 6).

**Policy Considerations;** Providing parks and recreation facilities is consistent with the City's strategic plan to enhance livability in Sacramento's neighborhoods by expanding park, recreation, and trail facilities throughout the City.

Sufficient opportunities to provide input to the Reichmuth Park Master Plan were provided to the community (Policy 2.0 and 13.37 of the *2005-2010 Parks and Recreation Master Plan*). This is part of the Park Development Process for park



planning as stated in the *2005-2010 Parks and Recreation Master Plan*.

**Committee/Commission Action:** The Reichmuth Park Master Plan was reviewed and supported by the Parks and Recreation Commission (PRC) on August 7, 2008.

#### **Environmental Considerations:**

**California Environmental Quality Act (CEQA):** The proposed project is exempt from CEQA under Section 15303 of the CEQA Guidelines (Tit. 14 Cal. Code Reg. §15000 et seq.). Section 15303 consists of construction of limited numbers of new, small facilities or structures; installation of new play equipment; conversion of existing park amenities from one use to another with only minor modifications. Trees being removed will be replaced with additional landscaping and vegetation.

**Sustainability Considerations:** The Reichmuth Park has been reviewed for consistency with the goals, policies, and targets of the Sustainability Master Plan. If approved, the contents of this report will advance the following goals, policies, and targets by: 1) improving the health of residents through access to a diverse mix of wellness activities; 2) creating "Healthy Urban Environments" through Restorative Redevelopment; and 3) using recycled content material. The recycled materials proposed for this project are as follows: concrete pavement (13.5%), rock base under the pavement (10%) steel used on the site furnishings (45%), and steel used on the skate board ramps (50%). The development of this park is consistent with sustainable design through the use of low water use shrubs and groundcover and use of native tree plantings purchased from local vendors.

**Rationale for Recommendation:** The design of master plans is part of the Park Planning process as referenced in the approved *2005-2010 Parks and Recreation Master Plan*.

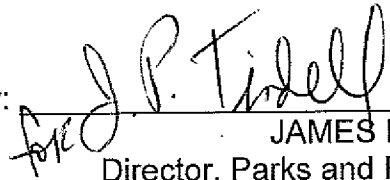
The updated park master plan adds these elements to the existing park site: walkways, seating areas, exercise stations, picnic area with grills, ornamental garden, interpretive signs, art work, a ball wall, a skate park, and a new parking lot at the tennis courts. The master plan also relocates the existing basketball court, removes the existing volleyball court, and expands the existing parking lot. Some of additional changes include but are not limited to adding lighting and automatic gates to the existing and future parking lots, orienting the ball wall so both sides of the wall are visible from Gloria Drive, and increasing walkway widths to 10' so safety and maintenance vehicles can use these paths.

**Financial Considerations:** There are no financial considerations for approval of environmental documents or a park master plan. Staff will return to Council to approve a construction contract.

Development of parks creates an ongoing cost for park maintenance and utilities based on the size of the park. Maintenance staffing for this existing park has been provided for in the Department's approved FY08/09 Operating Budget. Approval of the park's master plan does not constitute approval of the development of the facility.

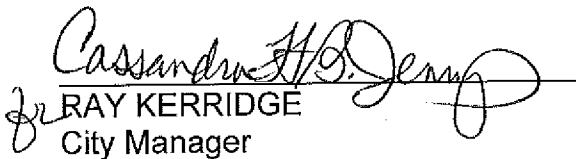
**Emerging Small Business Development (ESBD):** No goods or services are being purchased as a result of this report.

Respectfully Submitted by:



JAMES L. COMBS  
Director, Parks and Recreation

Recommendation Approved:



RAY KERRIDGE  
City Manager

**Table of Contents:**

Report	pg. 1
<b>Attachments</b>	
1 Background Information	pg. 4
2 Reichmuth Park Location Map	pg. 6
3 Reichmuth Park Master Plan (original)	pg. 7
4 Resolution	pg. 8
Exhibit A – Reichmuth Park Master Plan	pg. 9

**Attachment 1****Background Information**

Reichmuth Park is an established 42.1-acre community park in South Land Park located at 6135 Gloria Drive.

On November 30, 2007, a community meeting was conducted to discuss the update of the Reichmuth Park Master Plan. Subsequently, there have been several meetings with the community, the Alice Birney Elementary School, the Youth Commission, and the City Council Office to discuss the plan. On February 11, 2008, the master plan draft was presented to the community. A discussion of the master plan was conducted and revisions were made to the master plan responding to the comments.

On April 21, 2008, the Parks and Recreation Commission's (PRC's) Park Planning and Development Services Committee reviewed the updated Reichmuth Park Master Plan. The Committee recommended the master plan with the following comments: 1) the Department of Parks and Recreation (DPR) needs to improve its outreach when developing improvements to community parks; 2) a timer is needed on the tennis court gate handle to keep it locked to eliminate use after the court is closed; 3) the ball wall should be relocated to the southeast of the tennis court; and 4) DPR should consider removing the parking lot near the tennis court. The comments regarding the master plan were incorporated in the master plan and presented to the PRC on May 1, 2008.

The master plan originally went to the Parks and Recreation Commission on May 1, 2008; however, the PRC asked staff to: 1) look into adding a disk golf course for the natural area; 2) look at relocating the skate park and possible switching of the location with the basketball court; 3) put in additional seating areas; 4) modify the fitness stations to accommodate both youth and adults; 5) look into adding additional senior activity such as adult fitness stations or gardening; 6) relocate the ball wall so it is more visible from the street; and, 7) report the demographic information surrounding Reichmuth Park.

Staff's responses to these comments were as follows: 1) adding a disc golf course is against the community's wishes to leave the natural area as is; 2) staff reviewed the existing conditions at the park and the location of the skate park has been moved to the north side of the utility pump station (the skate park could not be switched with the basketball court because the basketball court is next to the detention area and the skate park would require more area than the basketball court; it would also require adding fill dirt to the detention basin area which would reduce the basin capacity); 3 & 4) staff added the fitness stations and additional seating areas to the master plan; 5) the ornamental garden was modified to a demonstration garden, intended to be used and maintained by the senior community; 6) the ball wall has been relocated; and 7) the demographic information for the Reichmuth Community Park 3-mile service area serves a population consisting of 27.6% (ages 0-19) children and teenagers, 52.6% (ages 20-59) adults, and 19.8% older adults (ages 60+).

<b>Reichmuth Community Park Service Area Age Distribution (2009)</b>	<b>Total</b>	<b>Percentage</b>
0-4	8,433	6.2%
5-9	8,983	6.6%
10-19	20,264	14.8%
20-29	16,482	12.0%
30-39	16,661	12.1%
40-49	19,954	14.5%
50-59	19,250	14.0%
60-64	7,273	5.3%
65+	19,841	14.5%
<b>Total population within 3-mile radius</b>	<b>137,141</b>	<b>100%</b>

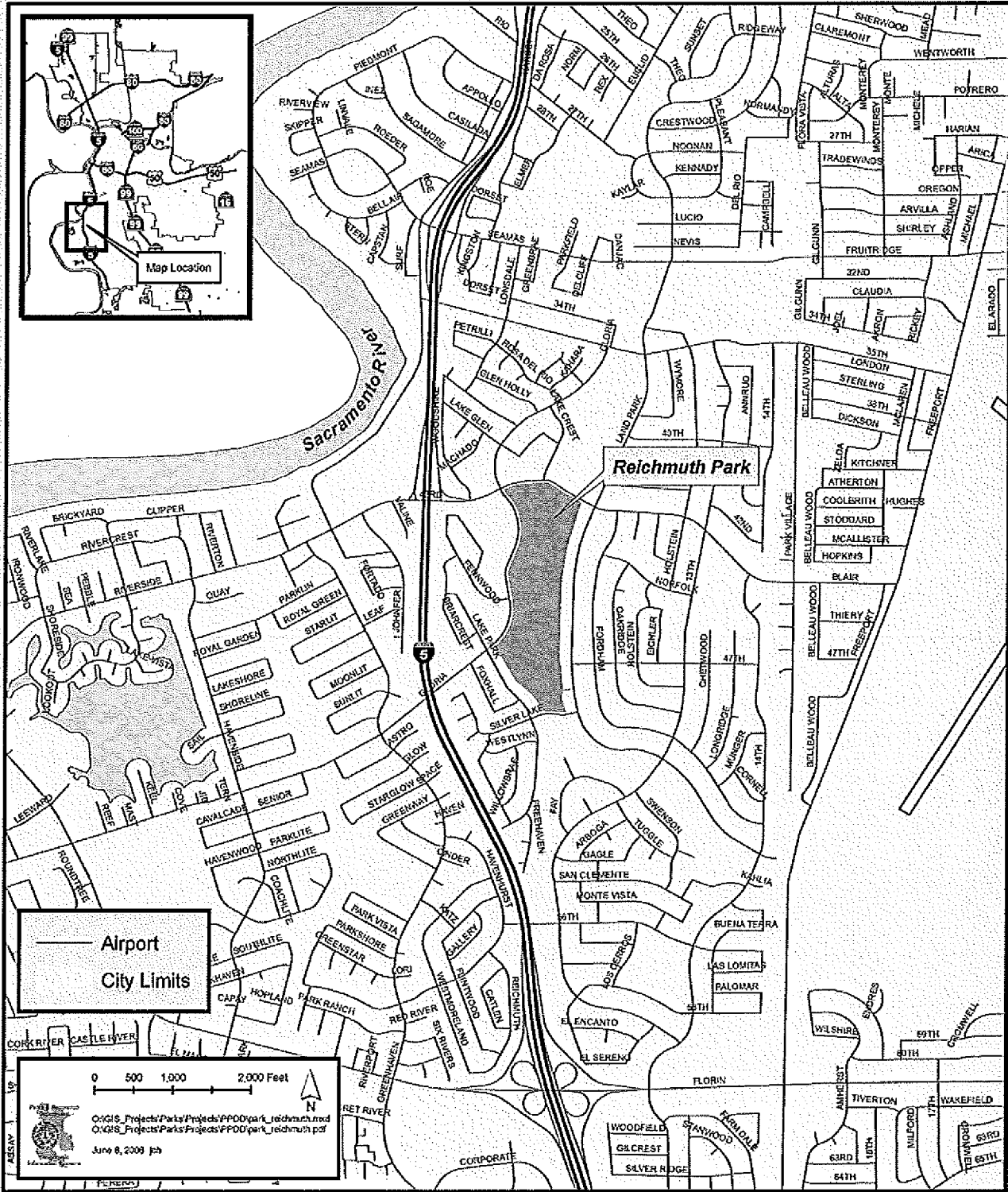
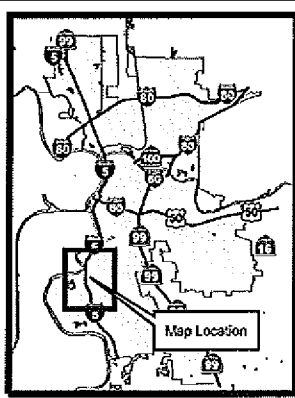
*Source: Applied Geographic Solutions, Thousand Oaks, CA, 2004 via City Economic Development Department website*

On August 7, 2008, the Parks and Recreation Commission reviewed the changes to the Reichmuth Park Master Plan and they recommended approval of the master plan.

The first phase of development will consist of constructing the demonstration garden, skate park, and art work. Construction is slated to begin in the spring of 2009 and completed by the close of 2009.



# City of Sacramento Department of Parks and Recreation Reichmuth Park

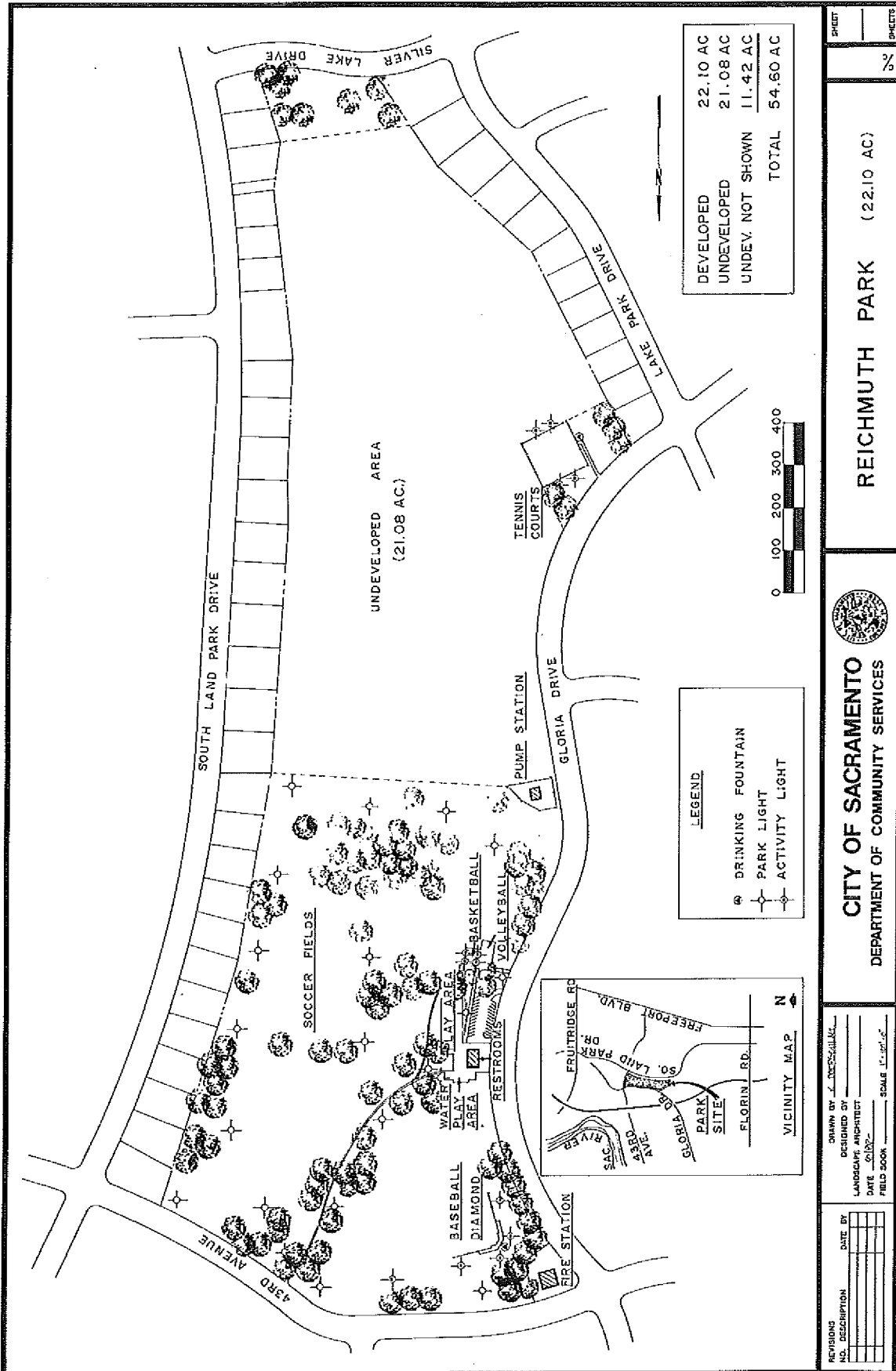


Airport  
City Limits

0 500 1,000 2,000 Feet

0:\GIS\_Projects\Parks\Projects\PPDD\park\_reichmuth.mxd  
0:\GIS\_Projects\Parks\Projects\PPDD\park\_reichmuth.pdf

June 8, 2009 jpb





**RESOLUTION NO. 2008-**

Adopted by the Sacramento City Council

**September 23, 2008**

**APPROVING THE REICHMUTH PARK MASTER PLAN CHANGE**

**BACKGROUND**

- A. Reichmuth Park is a 42.1-acre community park located in South Land Park. The changes to the Reichmuth Park Master Plan was reviewed and supported by the Parks and Recreation Commission on August 7, 2008.
- B. The Environmental Services Manager has reviewed the project for compliance with the requirements of the California Environmental Quality Act (CEQA) and determined that the project is exempt under Section 15303 of the CEQA Guidelines (Tit. 14 Cal. Code Reg. §15000 et seq.).
- C. Long-term designs of public facilities are reviewed and approved by City Council.

**BASED ON THE FACTS SET FORTH IN THE BACKGROUND, THE CITY COUNCIL RESOLVES AS FOLLOWS:**

Section 1. The changes to the Reichmuth Park Master Plan are approved.

**Table of Contents:**

Exhibit A – Reichmuth Park Master Plan

