

Parker D. Severaid

General Contractor

License # 730623

Excellence in Remodeling

Arbitration and Mediation

5628 Darby Rd • Rocklin, Ca 95765 • Office (916) 624-4004 • Fax 315-3580

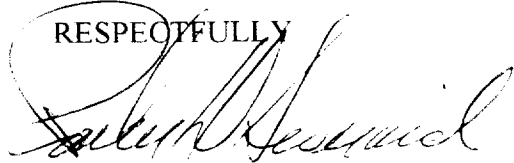
October 23, 2000

MEMORANDUM TO: BUILDING DEPARTMENTS: SACRAMENTO, PLACER,
AND EL DORADO COUNTY, ALL CITY BUILDING DEPARTMENTS THEREIN

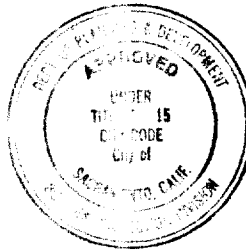
TO WHOM IT MAY CONCERN:

I, PARKER D. SEVERAID, GENERAL CONTRACTOR, HEREBY AUTHORIZE
THE BEARER OF THIS LETTER (OR COPY THEREOF), MR. GEORGE PEREZ,
TO APPLY FOR AND OBTAIN BUILDING PERMITS FOR CONSTRUCTION
PROJECTS BEING UNDERTAKEN BY MY COMPANY.

RESPECTFULLY



PARKER D SEVERAID
GENERAL CONTRACTOR
MOBILE PHONE NUMBER 257-3451



This set of plans and specifications must be kept on the job at all times and it is unlawful to make any changes or alterations from the same without written permission from the Building Inspection Division.

The approval of this plan and specification SHALL NOT be held to permit or approve the violation of any City Ordinance or State Law.

ISSUED

OCT 30 2000

CITY OF SACRAMENTO
DEVELOPMENT SERVICES DIV

*Verify wall being moved
is not a bearing wall. If
so, provide plans of loading
for plan check.*

MATT P. 10/30/00

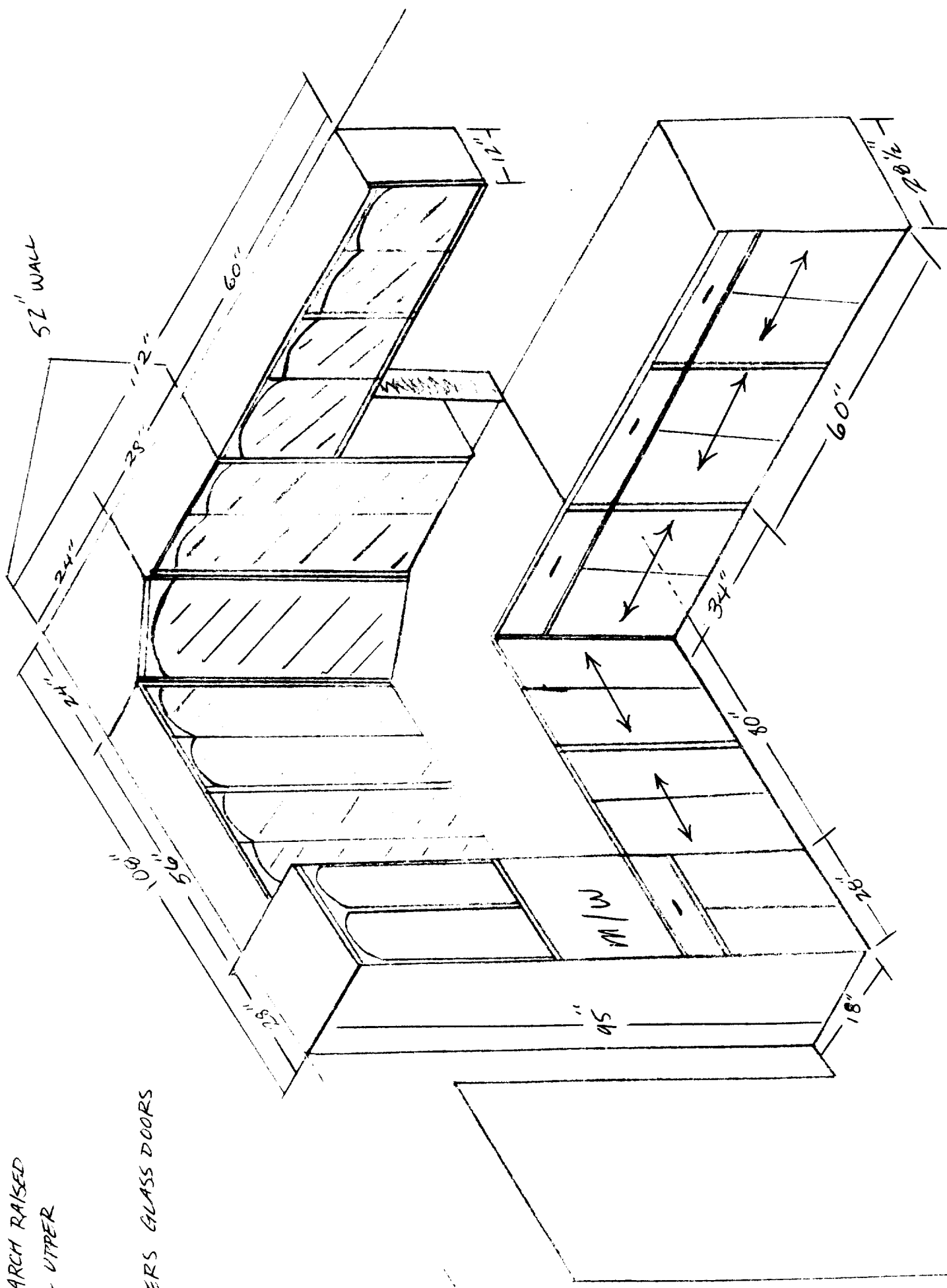
STD. HINGES
WHITE WASH
MARE.

REG ARCH RAISED
PANAL UPPER

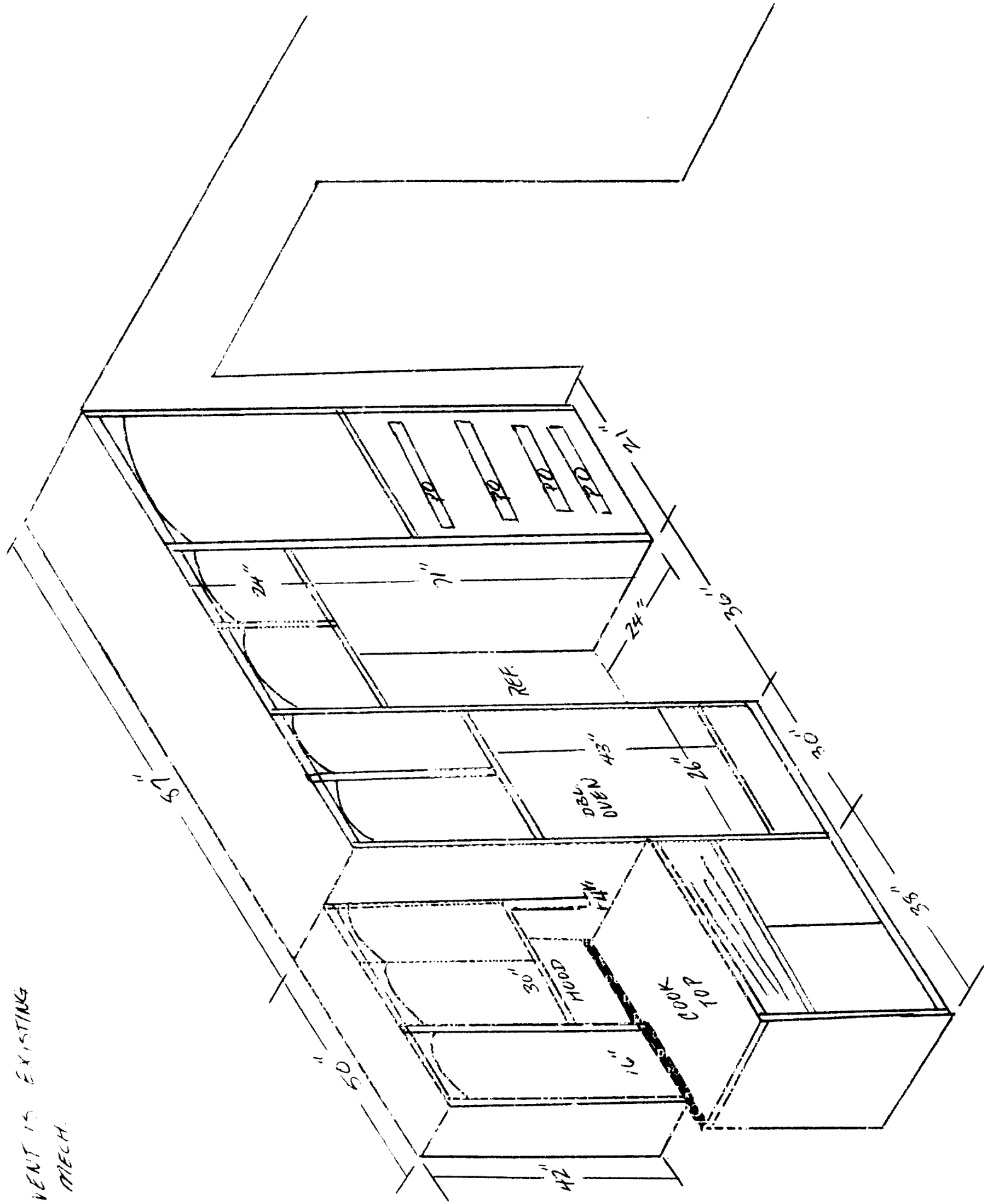
UPPERS GLASS DOORS

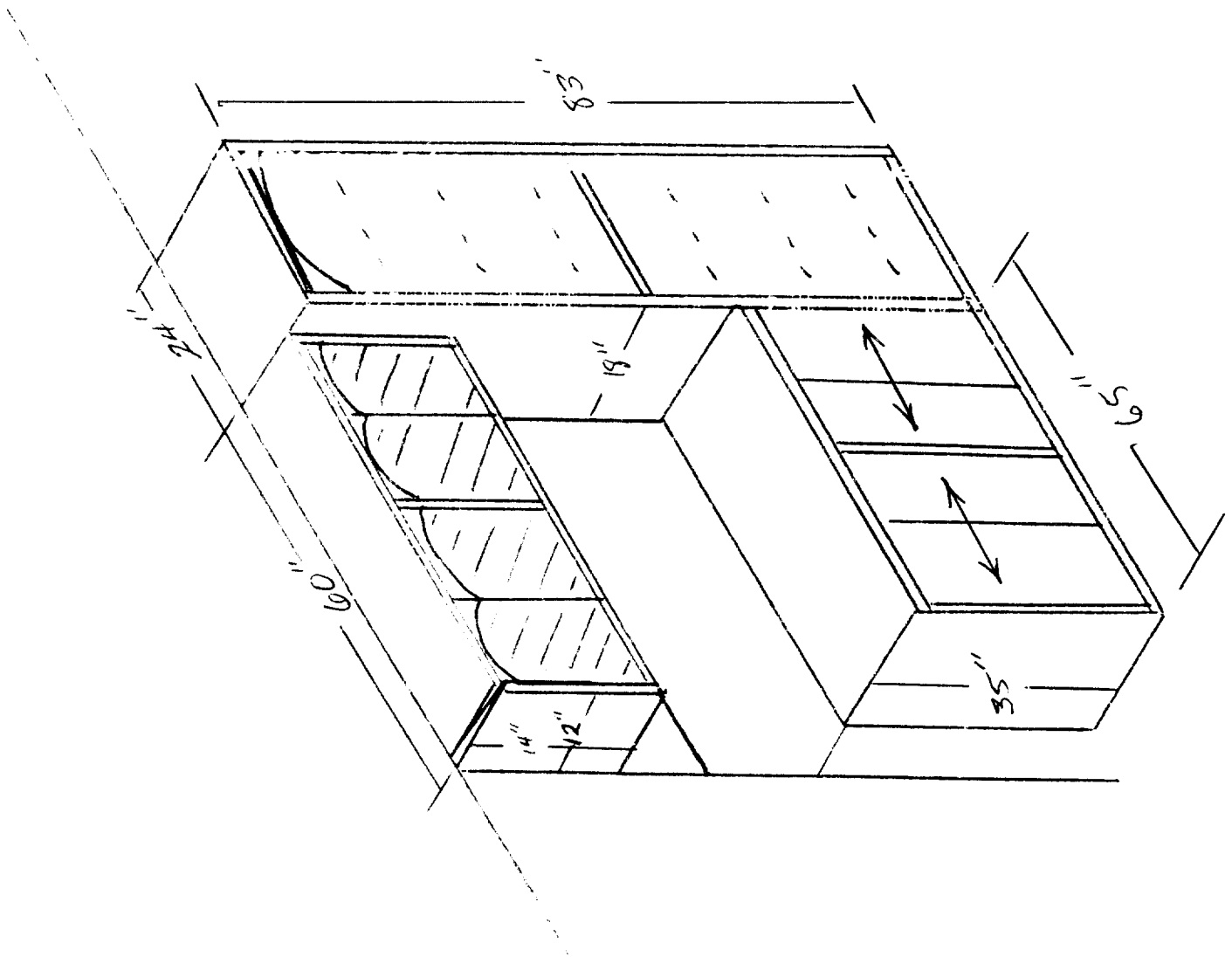
HOLD WALL AT 52"
W/ROCK

52" WALL

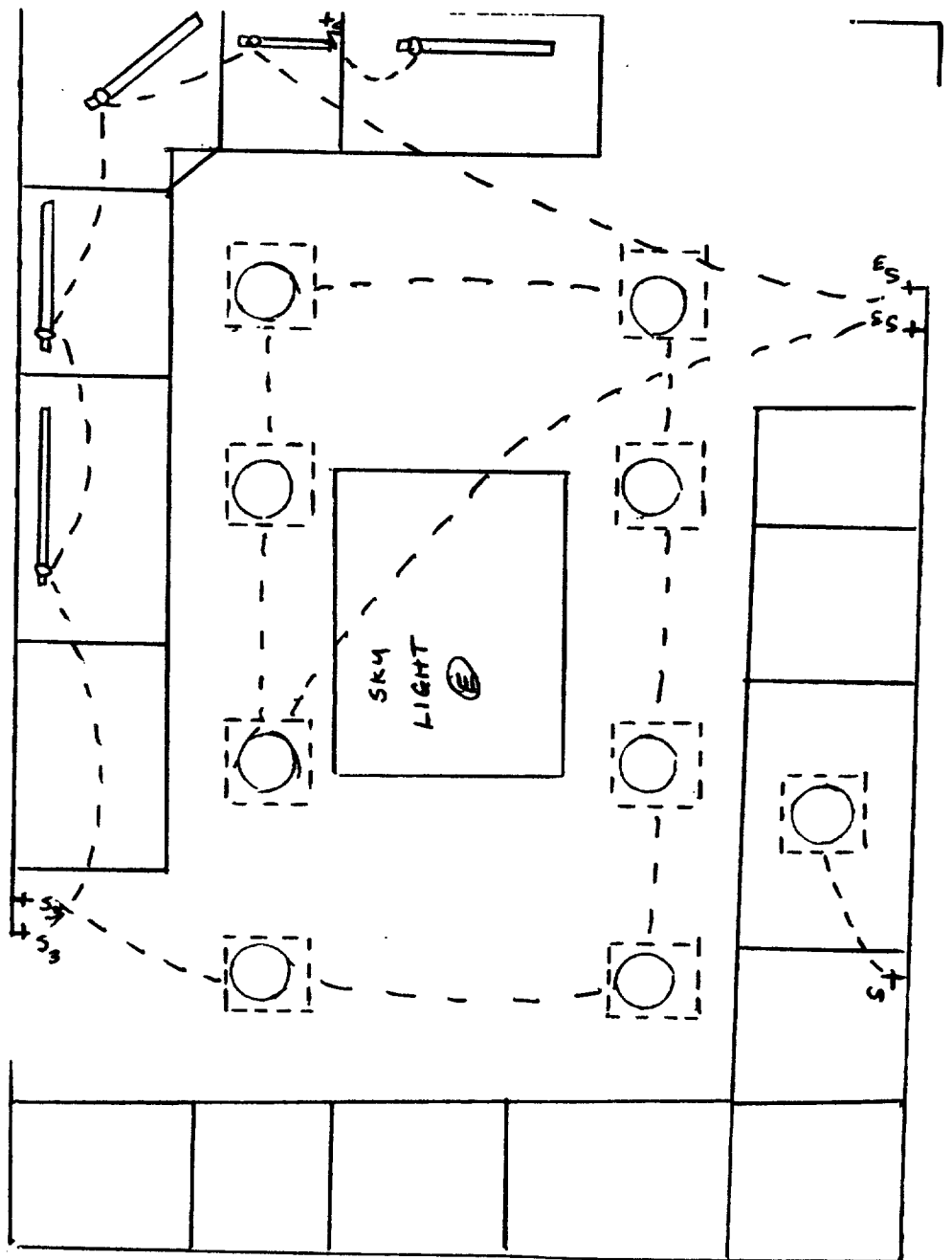


HOOD VENT IS EXISTING
ONLY 4 MECH.



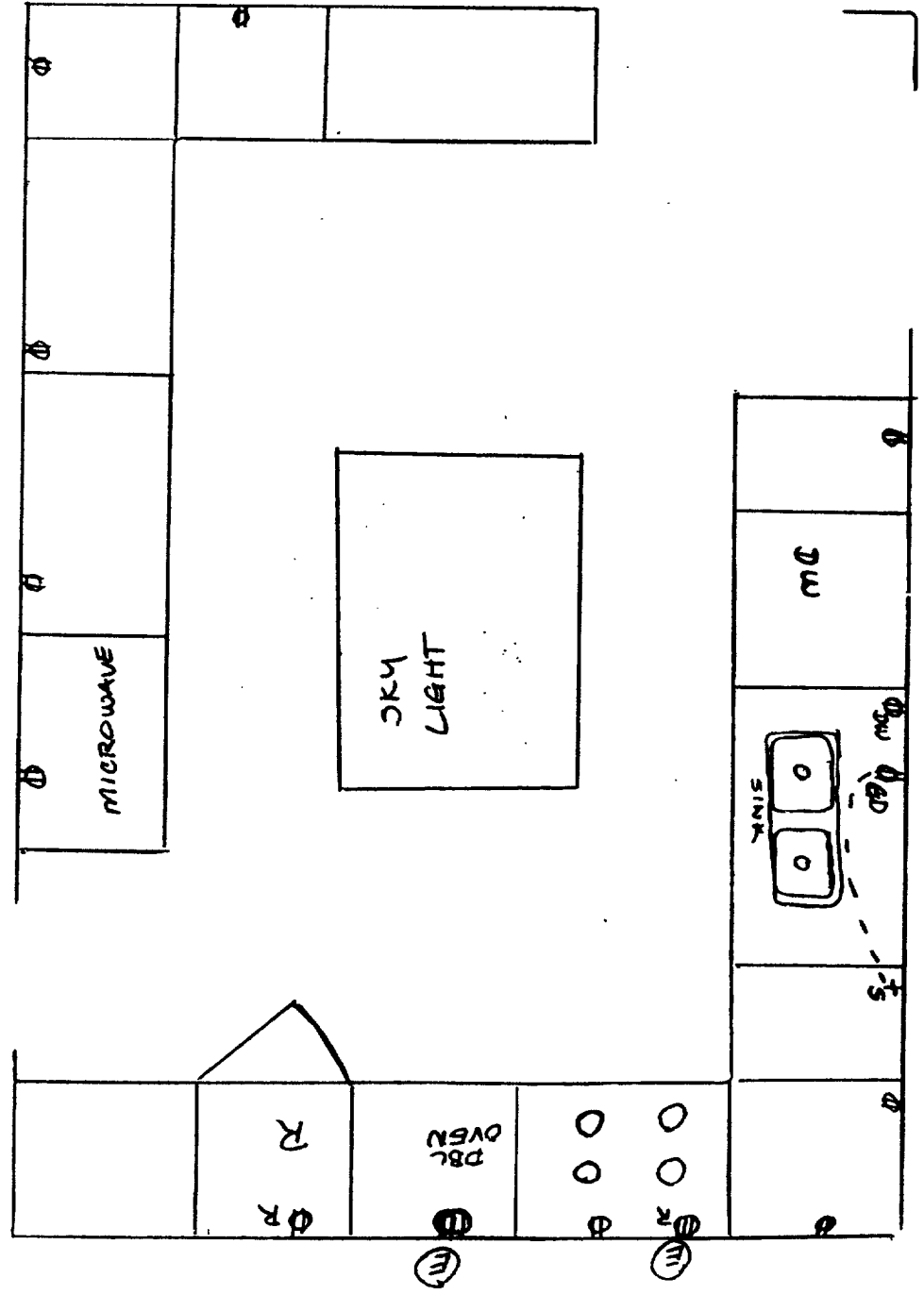


ELECTRICAL
LIGHT FIXTURES

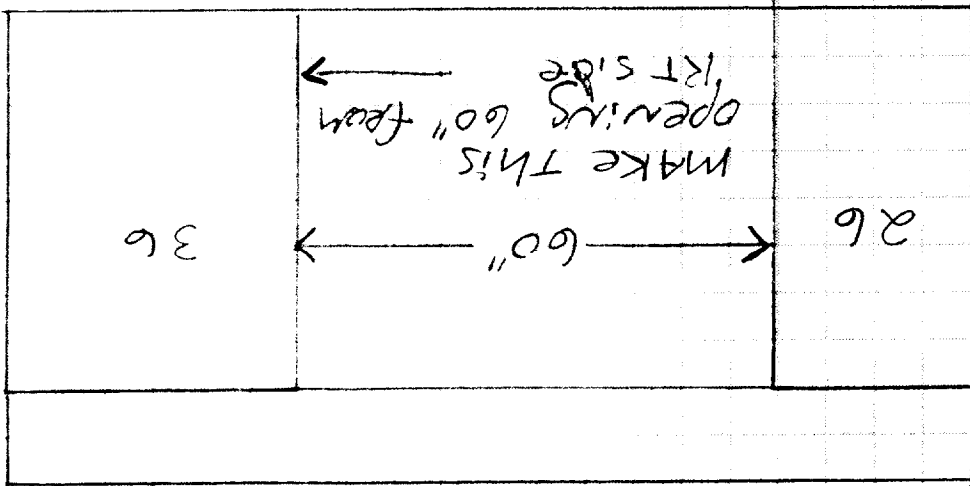


**ELECTRICAL
OUTLETS & SWITCHES**

- ① HOLD ALL OUTLETS AT 38" OFF FLOOR
- ② MICROWAVE OUTLET TO BE HELD 52" OFF FLOOR & 16" FROM DOOR TRIM
- ③ ALL OUTLETS ON SINK WALL NEED TO BE GFCI

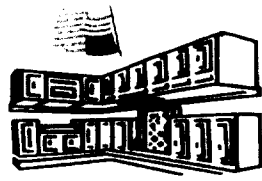


SINK.

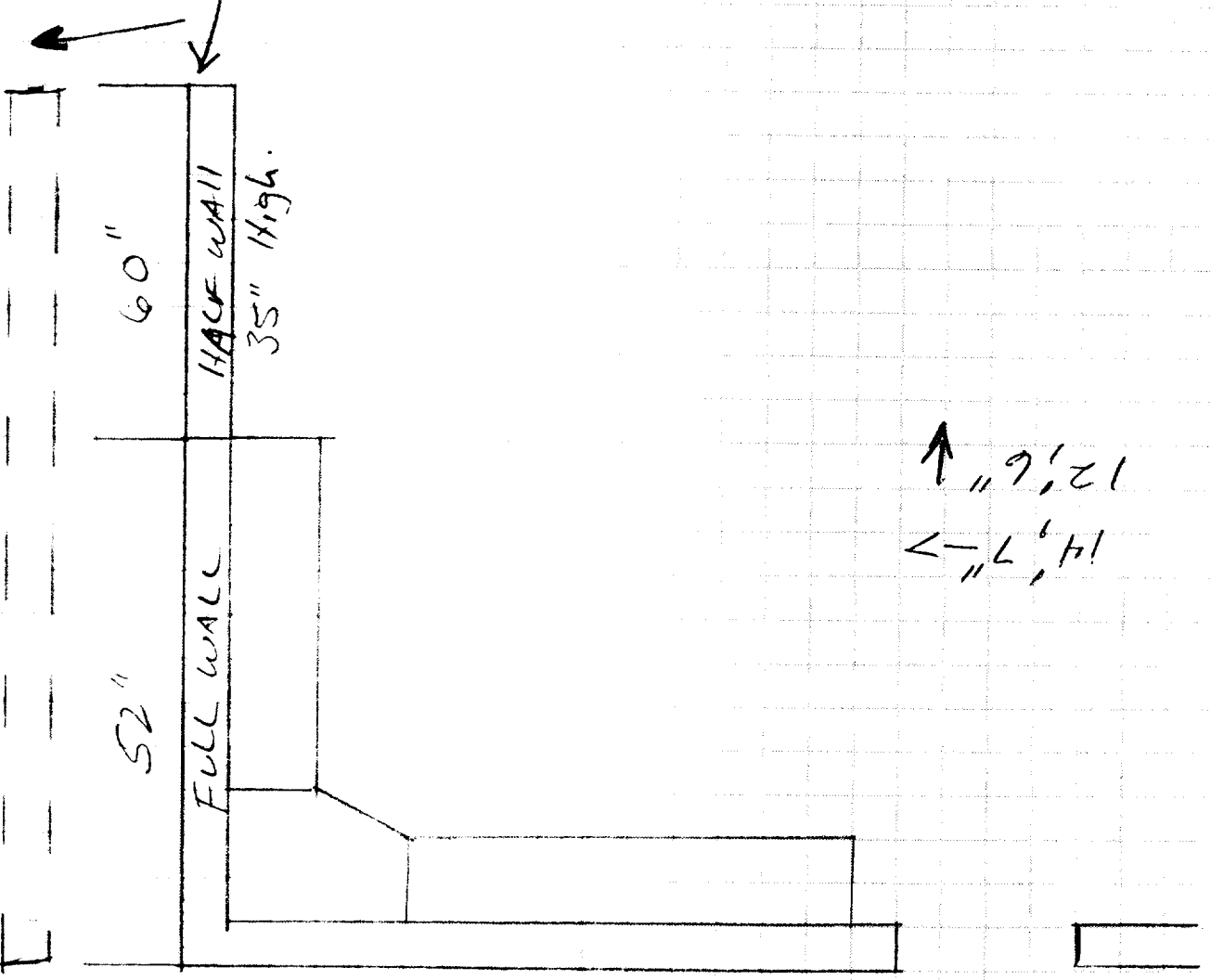


Complete Layout Design and Installation

13 cabinet wood.



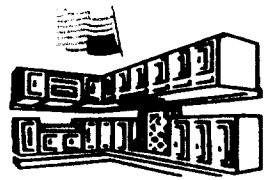
MOVE THIS WALL
OVER 12"



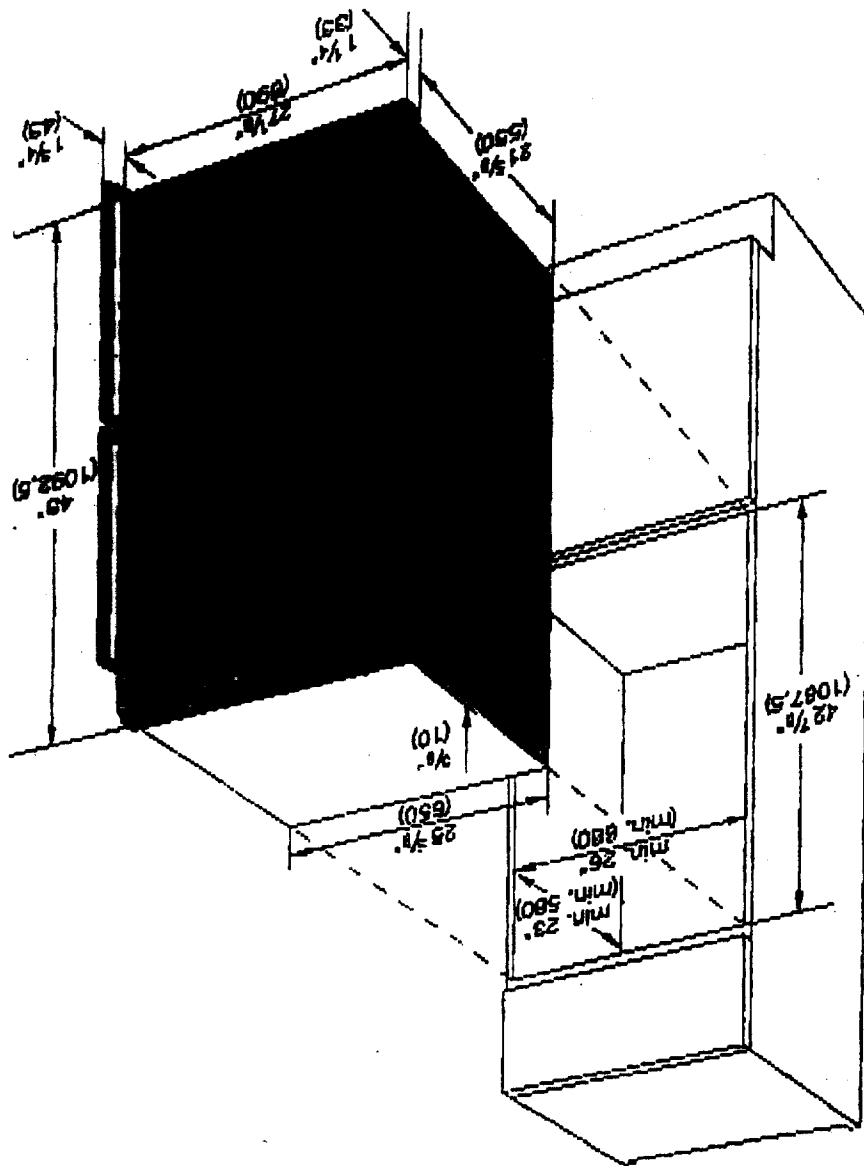
14' 7" →
 12' 6" ↑

BLAICWUD

Complete Layout Design and Installation



oven



Total rating: 28 kW
Total Amps: 32

DSW0227SS

oven for both ovens),
programmable with digi-
to 210° F and auto-
only upper oven).
-ise temperature con-
from 150° F to 550° F.
: actual temperature

reheating.

leaning system.

interior with very

for easy care.

system with 180 V cata-

clock with timer buz-

/ of polylic cleaning

timer with automatic

ature.

doors with quadru-

tion and 180° opening

tion lock mode.

: pans, 2 wire racks,

; meat probe.

king stone with adjust-

ent up to 550° F. pizza

king tray.

roasting pan.

ack for roasting pan.

The rack.

Models	AKR3001
General	
Recessed Porcelain or Stainless Steel Surface	Yes
Easy Clean Lift Up Top with Support Rod	Yes
"On" Indicator Lights	4
Removable Electric Coil Elements	Yes
Infinite Setting Controls	4
Colors	
Black-on-Black w/Chrome Burner Bows	AKR3001E
White-on-White w/Chrome Burner Bows	AKR3001WW
Almond-on-Almond w/Chrome Burner Bows	AKR3001LL
Stainless Steel w/Chrome Burner Bows	AKR3001SS
Elements (Wattage @ 240/208V)	
Two 6" Coils (Left Front and Right Rear)	1,500
Two 8" Heavy Duty Coils (Left Rear and Right Front)	2,100
Electrical	
Electrical Requirements	240/208 VAC, 60 Hz, 3 wire, single phase, 30 Amp
Warranty	
Entire Unit	Limited 5 years - surface elements - parts only Limited 2 years - parts only Full 1 year - parts, labor, & travel by an authorized Amarna servicer
Overall Dimensions (in Inches)	
Width	29 1/2
Depth	21 1/2
Approximate Shipping Weight (lbs.)	45
Cutout Dimensions (in Inches)	
Width	28 1/2
Depth	19 3/16

* Please refer to current installation instructions for all installation information

