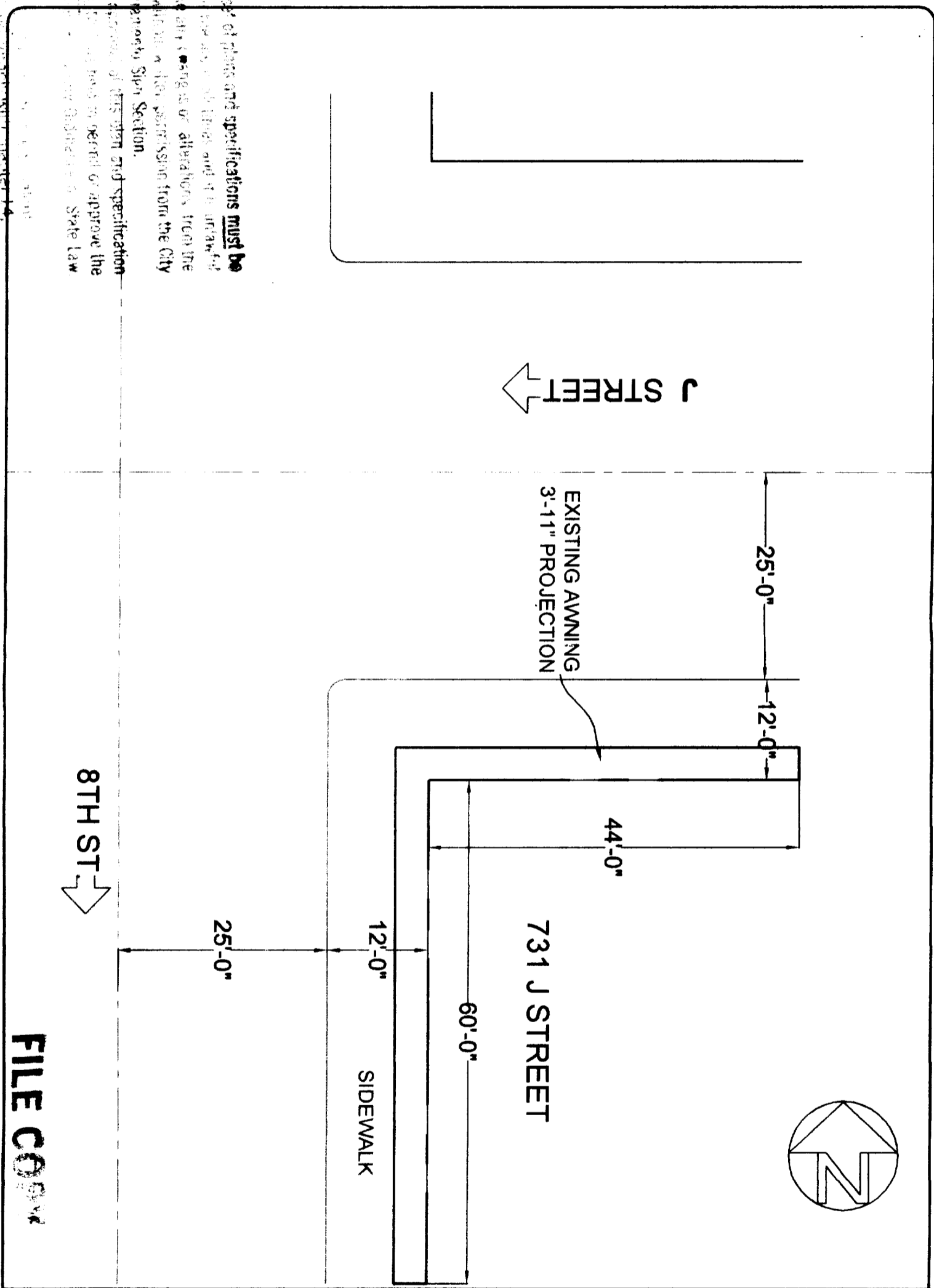




This set of plans and specifications **must be** prepared in accordance with the provisions of the City of San Francisco Sign Section, and the provisions of this sign and specification section, and shall be subject to approval by the Director of the Department of Planning & Research, City of San Francisco, State Law.

EQUIPMENT MUST BE USED AS DESIGN INTENDED  
 ALL SIGN INSTALLATIONS ARE SUBJECT TO FIELD INSPECTIONS



**FILE COPY**

*Part # 0102194  
 S-21524*

| REVISIONS | BY |
|-----------|----|
|           |    |
|           |    |
|           |    |
|           |    |
|           |    |

**SUBWAY 8TH & J. ST  
 731 J STREET, S.A.C.  
 PLOT PLAN**

**SPECIALTY CONSTRUCTION**

GPS SPECIALTY CONSTRUCTION INC. does not represent that these plans or the specifications in connection therewith are suitable, whether or not modified for any other site than the one they were prepared. GPS SPECIALTY CONSTRUCTION INC. disclaims responsibility for these plans and specifications if they were used in whole or in part at any other site.

All drawings and written material appearing herein constitute the original and unpublished work of GPS SPECIALTY CONSTRUCTION INC. and the same may not be duplicated, used, or disclosed with out written consent of GPS SPECIALTY CONSTRUCTION INC.

DATE: 3-9-01

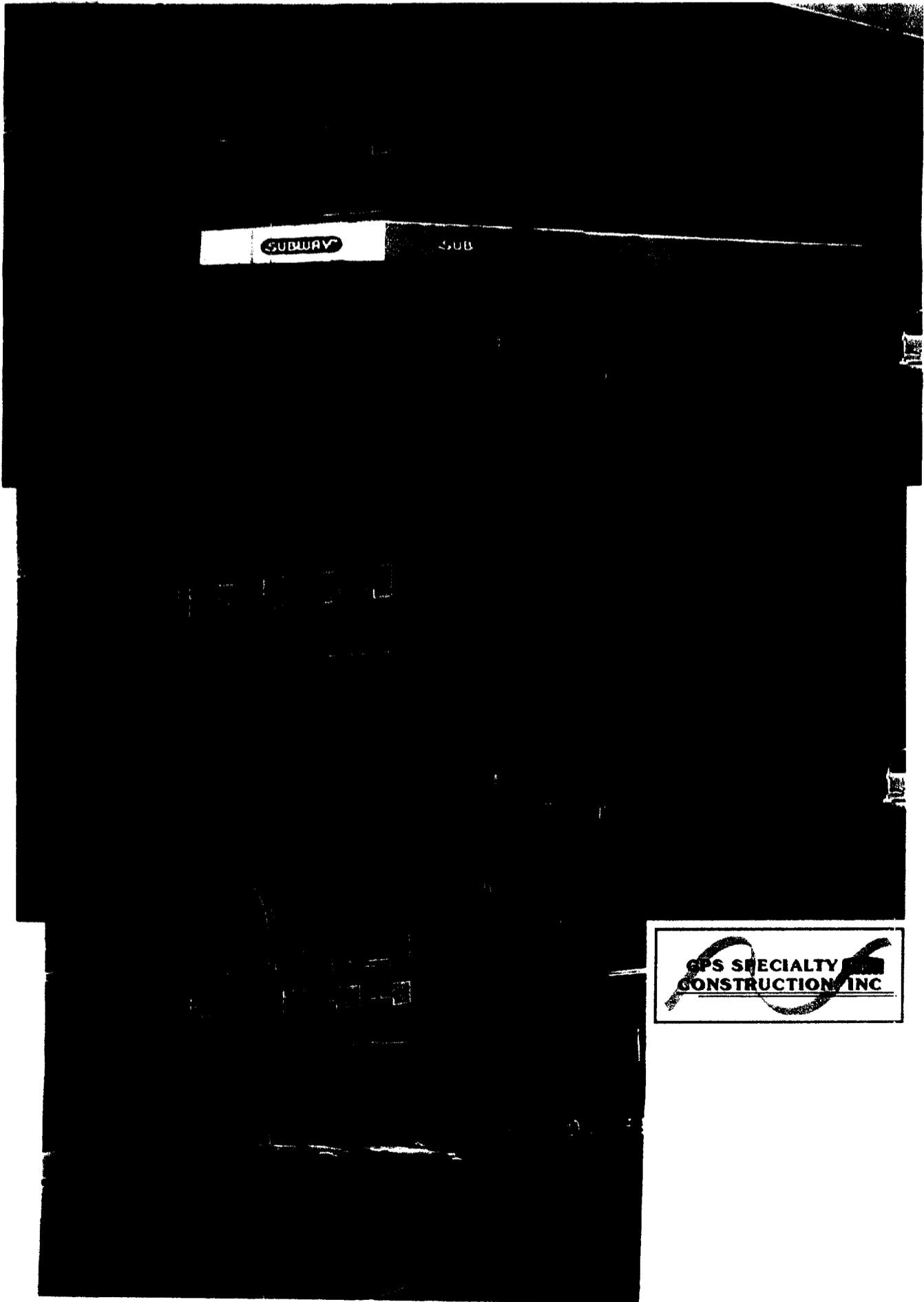
SCALE NOTED

DRAWN: DA.

JOB: NOTED

SHEET: TWO

OF TWO SHEETS



SUBWAY

SUB

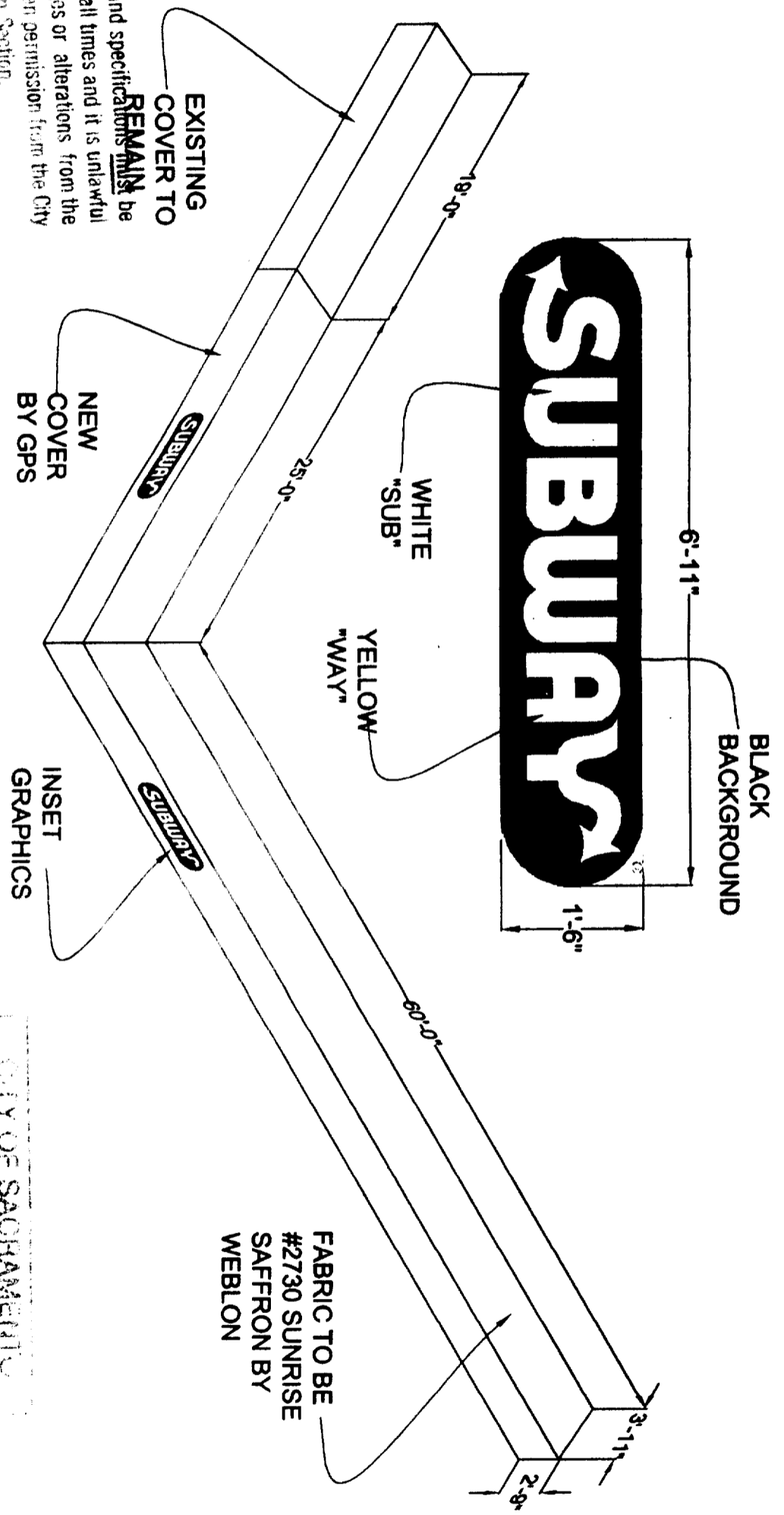
GPS SPECIALTY  
CONSTRUCTION, INC



This set of plans and specifications **REMAIN** kept on the job at all times and it is unlawful to make any changes or alterations from the plans without written permission from the City of Sacramento Sign Section. The approval of this plan and specification **SHALL NOT** be held to permit or approve the violation of any City Ordinance or State Law.

Approved by: \_\_\_\_\_  
 Date: \_\_\_\_\_  
 Title: \_\_\_\_\_

ALL SIGN INSTALLATIONS ARE SUBJECT TO FIELD INSPECTIONS



FABRIC TO BE  
 #2730 SUNRISE  
 SAFFRON BY  
 WEBLON

CITY OF SACRAMENTO  
 DESIGN REVIEW  
 PROJECT NO: DP01-946  
 APPROVED BY: *Elisabeth Smith*  
 APPROVAL DATE: 3-9-01  
 Fabric sample subject to  
 Approval by Luis Sanchez

| REVISIONS | BY |
|-----------|----|
| 3-9-01    | DA |
|           |    |
|           |    |
|           |    |
|           |    |

SUBWAY 8TH & J. ST  
 731 J STREET, SAC.

DATE: 2-14-2001  
 SCALE: NOTED  
 DRAWN: DA  
 JOB: NOTED  
 SHEET: ONE  
 OF ONE SHEETS

GPS SPECIALTY CONSTRUCTION INC. does not represent that these plans or the specifications in connection therewith are suitable, whether or not modified for any other site than the one they were prepared. GPS SPECIALTY CONSTRUCTION INC. disclaims responsibility for these plans and specifications if they were used in whole or in part at any other site. All drawings and written material appearing herein constitute the original and unpublished work of GPS SPECIALTY CONSTRUCTION INC. and the same may not be duplicated, used, or disclosed without written consent of GPS SPECIALTY CONSTRUCTION INC.