



REPORT TO COUNCIL

City of Sacramento

915 I Street, Sacramento, CA 95814-2604
www.CityofSacramento.org

CONSENT
February 12, 2008

Honorable Mayor and
Members of the City Council

Title: Park Name and Master Plan for Magnolia Park

Location/Council District: 251 Greg Thatch Circle / Council District 1

Recommendation: Adopt a **Resolution:** 1) approving the name "Magnolia Park" and 2) approving the Magnolia Park Master Plan.

Contact: J.P. Tindell, Park Planning and Development Manager, 808-1955

Presenters: Not applicable

Department: Parks and Recreation

Division: Park Planning & Development Services

Organization No: 4727

Description/Analysis

Issue: Magnolia Park is a 4.7-acre neighborhood park located in North Natomas. Long-term designs of public facilities are reviewed and approved by the Mayor and City Council. A summary of the Magnolia Park project history is included as Attachment 1 (page 4) and an area map as Attachment 2 (page 5).

Policy Considerations: Providing parks and recreation facilities is consistent with the City's strategic plan to enhance livability in Sacramento's neighborhoods by expanding park, recreation, and trail facilities throughout the City.

Opportunities to provide input to this master plan were provided to the community (Policy 2.0 and 13.37 of the *2005-2010 Parks and Recreation Master Plan*). This is a part of the Park Development Process for park planning as stated in the *2005-2010 Parks and Recreation Master Plan*.

Committee/Commission Action: The Magnolia Park name and master plan (Attachment 3, page 6) were reviewed and supported by the Parks and Recreation Commission (PRC) on December 6, 2007.

Environmental Considerations: The Development Services Department, Environmental Planning Services Division has reviewed this project and determined that it is exempt from the provisions of the California Environmental Quality Act (CEQA) under Class 1, Section number 15301, Class 3, Section number 15303, and Class 4, Section number 15304(b). Projects exempted under Class 1, Section number 15301 consist of repair and minor alteration of existing structures or facilities. Projects exempted under Class 3, Section number 15303 consist of new construction or conversion of limited numbers of new, small structures or facilities. Projects exempted under Class 4, Section number 15304(b) consist of new gardening or landscaping.

Rationale for Recommendation: The design of master plans is part of the Park Planning process as referenced in the approved *2005-2010 Parks and Recreation Master Plan*.

Financial Considerations: There are no financial considerations for approval of a park master plan. Staff will return to Council at a later date to approve a construction contract.

The Neighborhood Park Maintenance Community Facilities District (CFD) was established to reduce reliance on the General Fund for neighborhood park maintenance and to preserve the level of maintenance in the parks system. The CFD pays for a portion of the maintenance costs for neighborhood parks. The amount of funding in the CFD depends upon the year the homes in that neighborhood were built and annexed to the CFD; maintenance of parks built before 2002 and all community parks, regional parks, open space, trails and buffer areas are not covered by the CFD. The funding of park maintenance not provided for by the CFD must be supported from other sources.

Development of parks creates an ongoing cost for park maintenance and utilities based on the size of the park. Maintenance staffing for this park development has not been provided for in the Department's approved FY07/08 Operating Budget. Budget augmentations have also not been made to cover water and utility costs associated with development of this park. The total unfunded operating and maintenance impact is \$10,200 per acre per year, totaling approximately \$47,940/year. Department staff will be working with Finance to address this funding gap.

Emerging Small Business Development (ESBD): No goods or services are being purchased as a result of this report.

Respectfully Submitted by:


JAMES L. COMBS
Director, Parks and Recreation

Recommendation Approved:

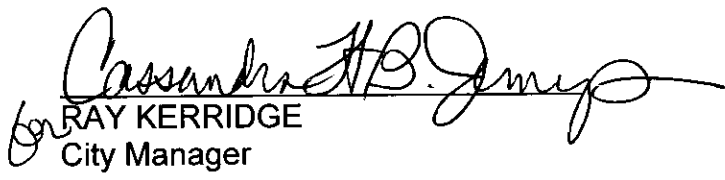

RAY KERRIDGE
City Manager

Table of Contents:

Report	pg. 1
Attachments	
1 Background Information	pg. 4
2 Magnolia Park Location Map	pg. 5
3 Magnolia Park Master Plan	pg. 6
4 Resolution	pg. 7

Attachment 1

Background Information

Magnolia Park is a 4.7-acre neighborhood park located off Elkhorn Boulevard, east of Highway 99 at Greg Thatch Circle and Tres Pieza Drive.

The park site may be subject to expansion, pending decision by the Natomas School District to locate a new school on the adjacent property. The master plan will not preclude this expansion and the addition of park improvements to the expansion property along the existing site's southern edge.

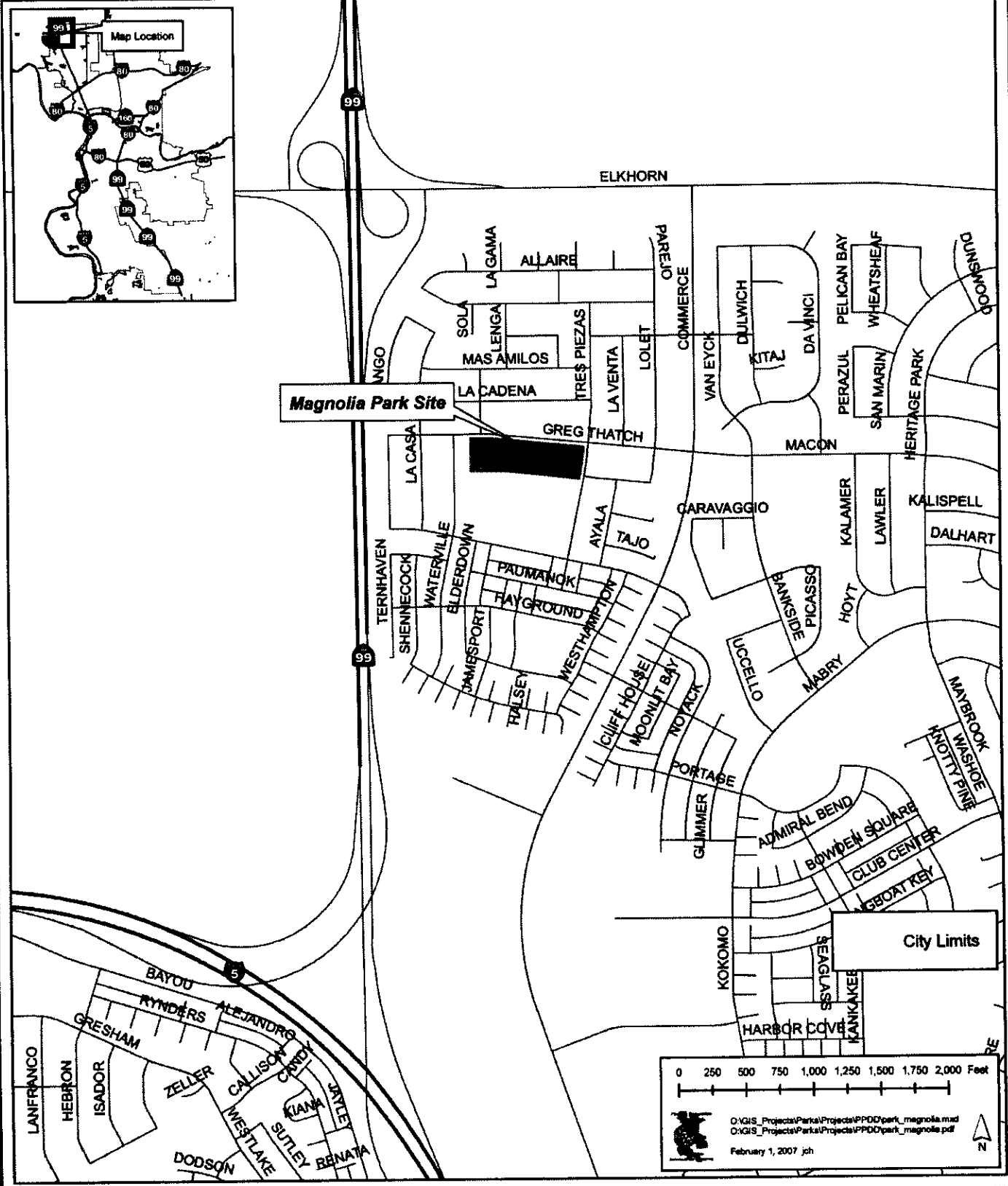
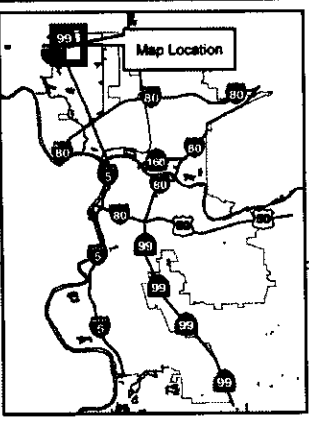
The proposed Magnolia Park Master Plan includes the following amenities: two tennis courts, a tot lot, an island themed adventure play area with swings and concrete play elements, interactive water misters, meandering pedestrian pathways throughout the park, seating areas, a sheltered, large group picnic area, barbeque grills, trash receptacles, a multi-purpose turf field, and landscape development of the entire site with turf mounds, canopy shade trees, shrubs, and ground cover.

The Magnolia Park Master Plan was developed through the public review process which included review and support by the community on August 1, 2007, and review and support by the Parks and Recreation Commission on December 6, 2007.

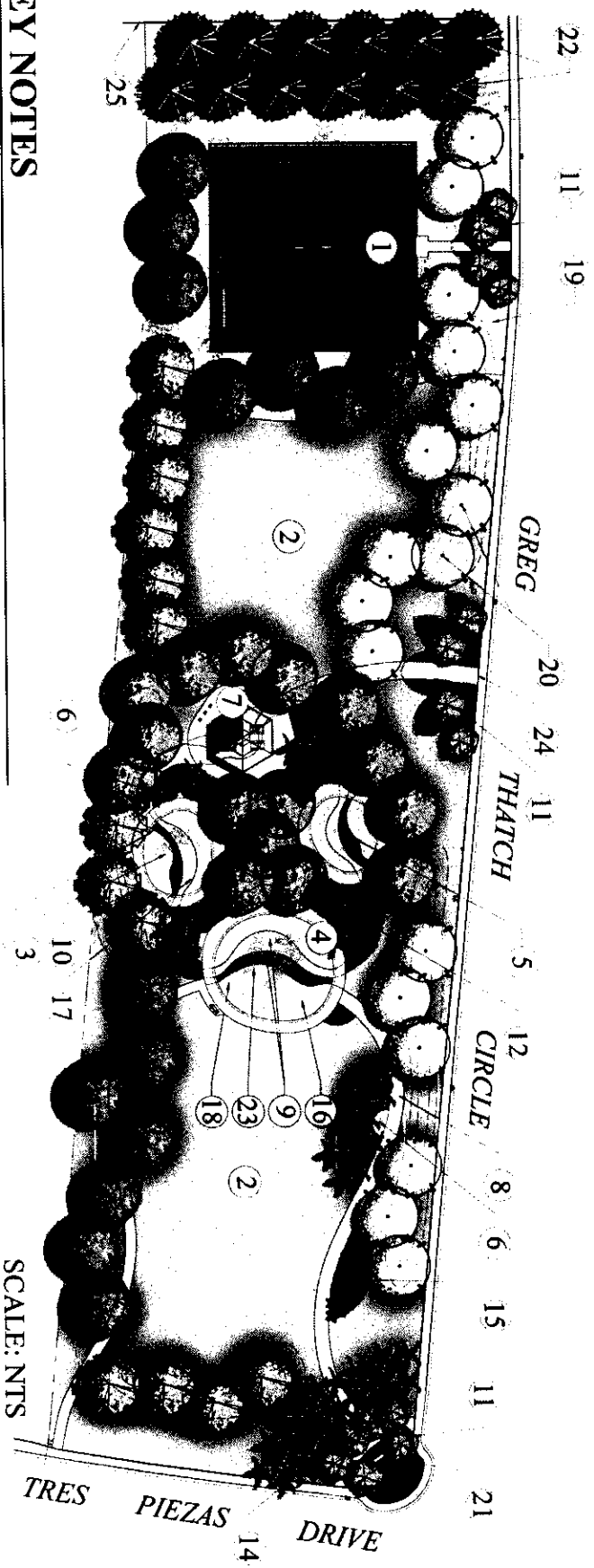
Magnolia Park is expected to begin construction in summer of 2008 and to be completed by spring 2010.



City of Sacramento Department of Parks and Recreation Magnolia Park



D:\GIS_Projects\Park\Projects\PPDO\park_magnolia.mxd
D:\GIS_Projects\Park\Projects\PPDO\park_magnolia.pdf
February 1, 2007 jch



KEY NOTES

- ① TENNIS COURTS
- ② OPEN TURF
- ③ TOT LOT (AGES 2-5)
- ④ ISLAND THEMED ADVENTURE PLAY (AGES 5-12)
- ⑤ SWINGS
- ⑥ PALM THEMED MISTERS
- ⑦ PICNIC AREA W/ SHADE STRUCTURE & BBQ GRILLS
- ⑧ CONCRETE PATH (TYP)
- ⑨ CUSTOM RESILIENT RUBBER SURFACING (TYP)
- ⑩ BOULDERS (TYP)
- ⑪ ENTRY PLANTER (MAGNOLIA PATTERN)
- ⑫ STAMPED CONCRETE BRIDGE (TYP)
- ⑬ CUSTOM COLORED CONCRETE
- ⑭ PALM TREES (TYP.)
- ⑮ TROPICAL-LIKE SHRUBS & GROUNDCOVER
- ⑯ CONCRETE TURTLE
- ⑰ CONCRETE GECKO
- ⑱ RESILIENT WOOD FIBER (TYP)
- ⑲ NATIVE PLANTING AREA (TYP)
- ⑳ MAGNOLIA TREE (TYP)
- ㉑ PARK ENTRY SIGN
- ㉒ EVERGREEN BUFFER TREES (TYP)
- ㉓ PRECAST CONCRETE PLAY ELEMENT
- ㉔ 10' WIDE CONCRETE PATH - MAINTENANCE ENTRY
- ㉕ EXISTING MASONRY WALL

SCALE: NTS



Stantec Consulting Inc.
 7590 Venture Oaks Way
 Sacramento, CA 95833
 Tel: 916.569.7100
 Fax: 916.927.9274
 www.stantec.com

MAGNOLIA PARK MASTER PLAN
 Sacramento, CA
 (4.7 Acres)

City of Sacramento
 Department of Parks and Recreation
 Landscape Architecture Section
 Date: 08/17/07



RESOLUTION NO. 2007-

Adopted by the Sacramento City Council

February 12, 2008

APPROVING THE PARK NAME AND MASTER PLAN FOR MAGNOLIA PARK

BACKGROUND

- A. "Magnolia Park" is a 4.7-acre neighborhood park located at 251 Greg Thatch Circle. The Magnolia Park Master Plan was reviewed and supported by the Parks and Recreation Commission on December 6, 2007.
- B. The Environmental Services Manager has reviewed the project for compliance with the requirements of the California Environmental Quality Act.
- C. Long-term designs of public facilities are reviewed and approved by City Council.

BASED ON THE FACTS SET FORTH IN THE BACKGROUND, THE CITY COUNCIL RESOLVES AS FOLLOWS:

Section 1. The name "Magnolia Park" is approved.

Section 2. The Magnolia Park Master Plan is approved.

