



NATOMAS PARK DRIVE



SITE PLAN
NO SCALE

This set of plans and specifications must be
kept on the job at all times and it is unlawful
to make any changes or alterations from the
plans without written permission from the City
Engineering Section.
The City Engineer need not permit or approve the
plans if they violate any City Ordinance or State Law.

... be of equivalent
... apply with chapter 14,
...
... SERVICES AS DESIGN INTENDED
... INVESTIGATIONS ARE SUBJECT TO FIELD INSPECTIONS

EXISTING
RIVER CITY BANK

PROPOSED SET
OF LETTERS

2681

INTERSTATE

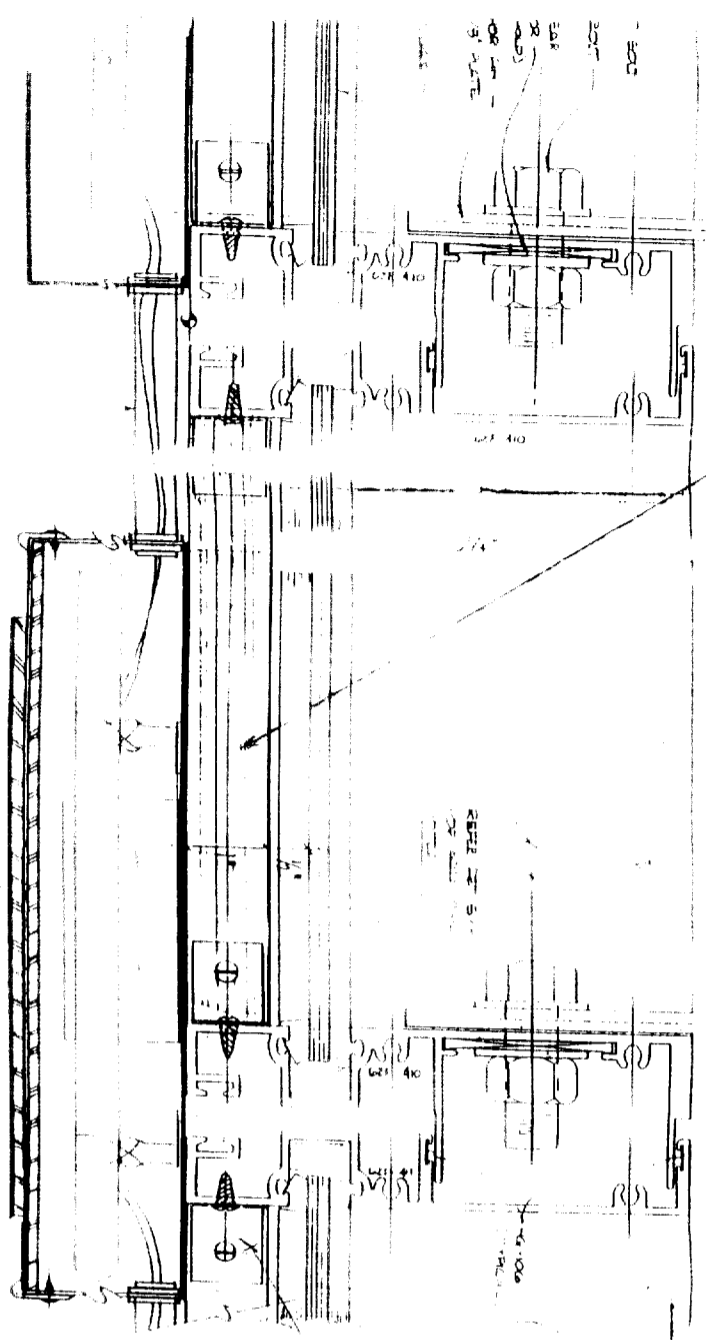
FILE COPY

521042

0000908

Earthlink

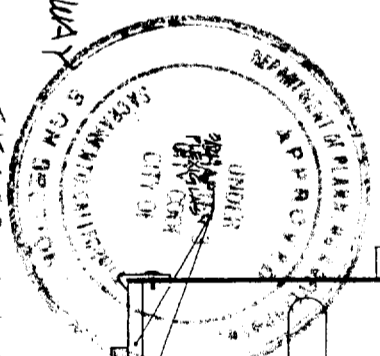
CR



FIELD INSTALL HORIZONTAL 1" X 1" SQ TUBES
 TOP & BOTTOM BETWEEN VERTICAL WINDOW
 MULLIONS FOR LETTER SUPPORTS & RAILWAY
 PAINT PER QUENTIS SPECS.

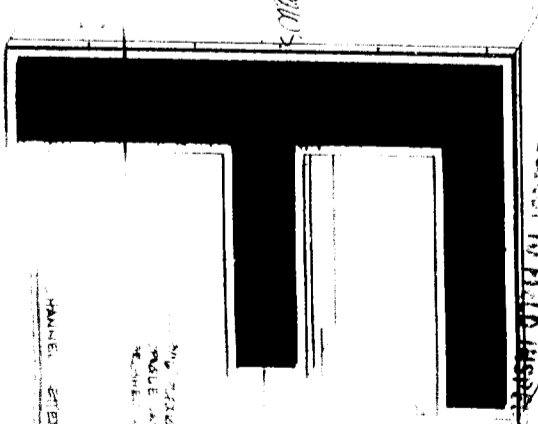
Provide DISCOUNT
 EXISTING CIR.

2 3/4" DIA ALUMINUM
 TUBES PER WINDOW



SECTION A-A OF ROAD CENTER FABRIKATION ON

ALL SIGN INSTRUMENTS TO BE SET TO SECTION A-A



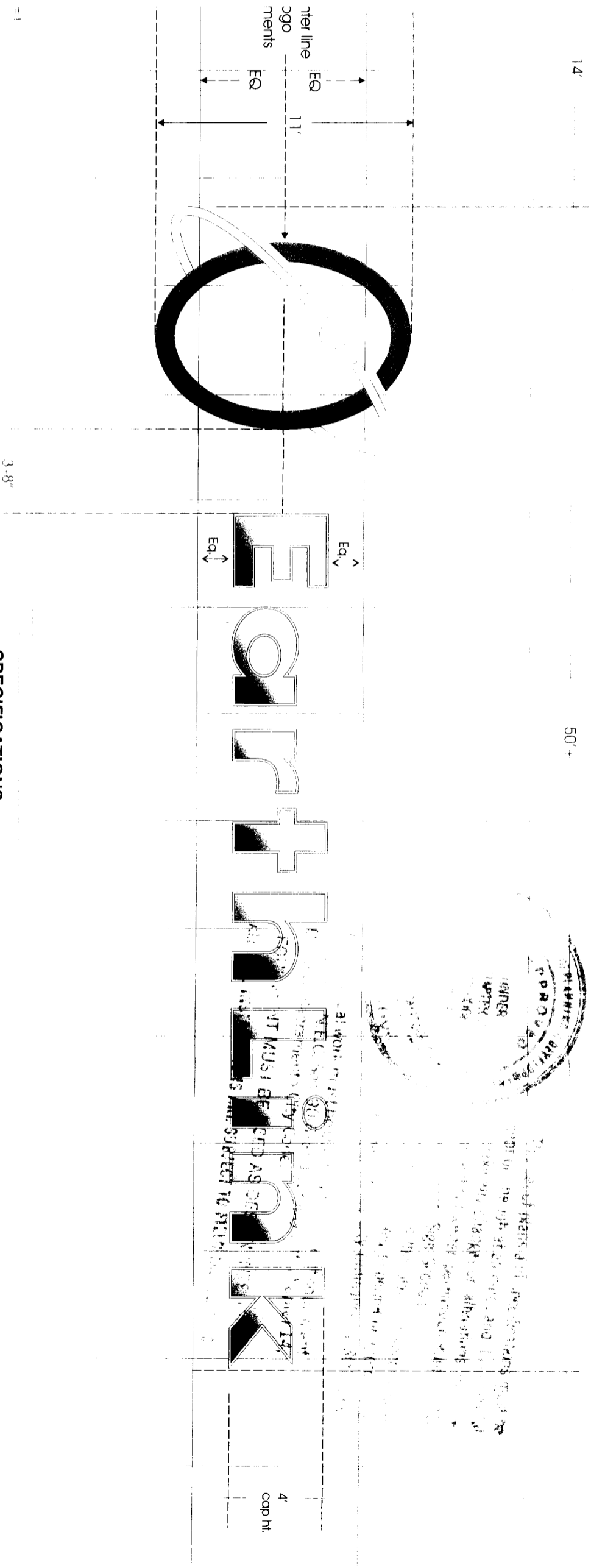
NEON TUBING
 MIRROR GLASS
 TUBE SUPPORTS

2 3/4" DIA ALUMINUM TUBES PER WINDOW

ACCOUNT MC1

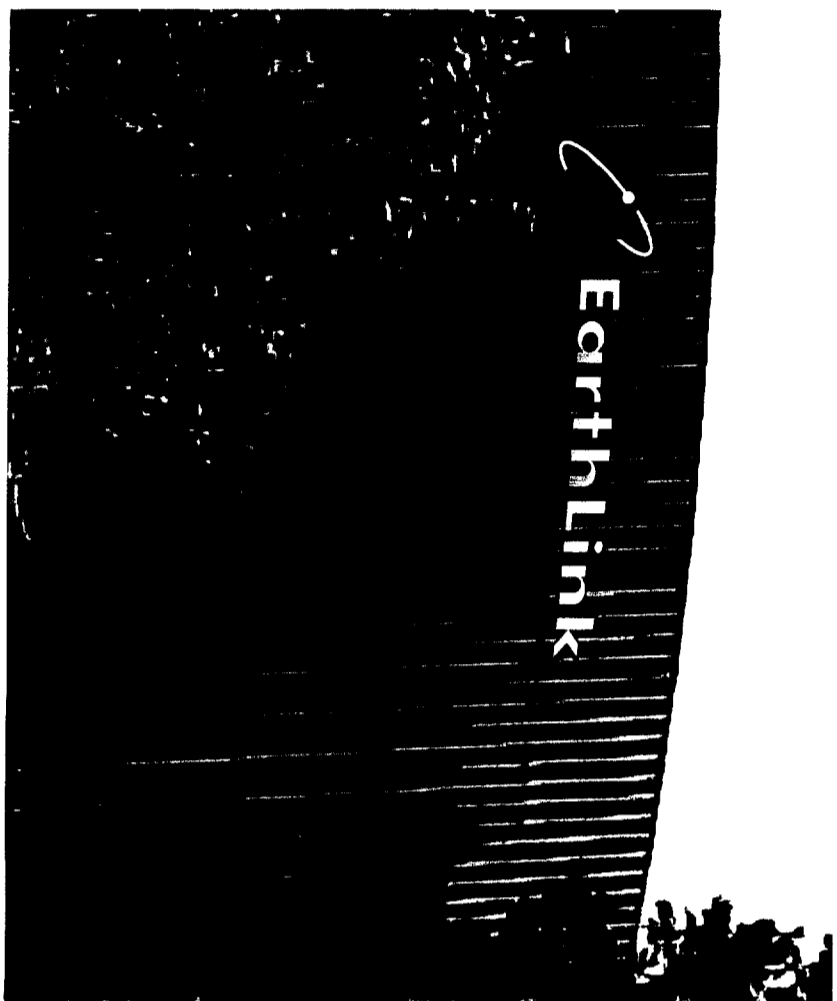
2495-NATOMAS PARK DR CITY SACRAMENTO STATE CA.





SPECIFICATIONS:

- 1 **LOGO** - Internally illuminated channel fabrication. Large oval has **Acrylic #2016 Yellow** (HHC Chemical Co.) face internally illuminated by **Tecnolux Yellow/Orange No. 10-N**. The 'Satellite w/Tail' has **White Acrylic** face internally illuminated with **White Daylight Neon**. Logo returns are brushed aluminum to match letters.
- 2 **TYPE** - Brushed aluminum characters with 1/32" visible thickness white acrylic outlines internally illuminated. Only the white outlines illuminate. All other surfaces are brushed aluminum.
- 3. Fabricator to use EarthLink logo digital artwork provided. Elements to be proportionately enlarged without any distortions.
- 4. Trim caps to be minimal and not diminish visible illuminated area of faces.
- 5. Fabricator to submit shop drawings duplicate sets to **EarthLink** (Hans Eisenman), **Prentiss Properties** (Kim Hood) and **Villa Design** (Art Villa) for review and approval prior to fabrication. Shop drawings must show placement of signage on building curtainwall cross sections, electrical and attachment details.
- 6. Fabricator will submit approved shop drawings to the Sacramento Permit Dept for pulling signage permits prior to fabrication.



APPROVED FOR PERMITTING
 ENGINEER
 DATE
 THIS

TO BE USED IN CONNECTION WITH THE PERMITTING OF THE PROJECT DESCRIBED IN THE PERMITTING APPLICATION AND TO BE USED IN CONNECTION WITH THE PERMITTING OF THE PROJECT DESCRIBED IN THE PERMITTING APPLICATION.

Approved for permitting
 APPROVED FOR PERMITTING
 DATE

Approved for Prentiss Properties
 APPROVED FOR PERMITTING
 DATE

14' 50'

280 (Bldg Footage)

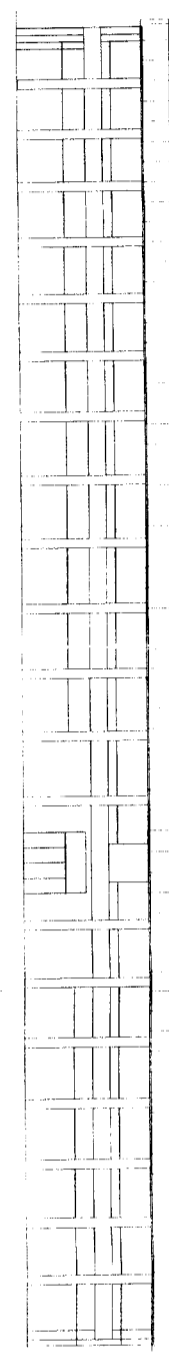
21 (WF)



1" Logo
w/4'-0" Letters

Building Frontage

21 (WF)



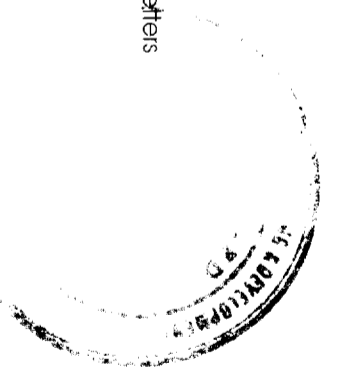
60' 14'



5" Logo
w/4'-0" Letters

Scale: 1/8" = 1'-0"

20' 0" (Bldg Footage) 20' 0" (Bldg Footage) 20' 0" (Bldg Footage) 20' 0" (Bldg Footage)



Handwritten notes and signatures at the bottom of the page, including a signature that appears to read 'S. J. ...'.



ELN - S. J. ...