

NORTH.

SHE PLAN
NO SCALE

ROAD

CUCUMONGA

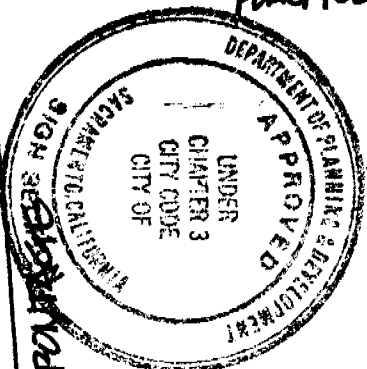
PROPOSED S/F 5'X17'
S/F SIGN CABINET.

DRIVE

SUTTER
HEALTH SUPPORT CTR.
ENTRANCE & STATE
OF CALIFORNIA

FLAG POLES

EXIST.
S/F INT. ILLUM.
SIGN CABINET.
5' X 17'



All electrical work must be U.L. labeled or be of equivalent standards, N.E.C. Sec. 90-6/and comply with chapter 14, Div. 2 of Sacramento City Code.
EQUIPMENT MUST BE USED AS DESIGN INTENDED
ALL SIGN INSTALLATIONS ARE SUBJECT TO FIELD INSPECTIONS

EMPLOYEE
ENTRANCE
ONLY

FILE COPY

S-20236
PER#
9806616

This set of plans and specifications must be kept on the job at all times and it is unlawful to make any changes or alterations from the same without written permission from the City of Sacramento Sign Section.
The approval of this plan and specification SHALL NOT be held to permit or approve the violation of any City Ordinance or State Law.

INN

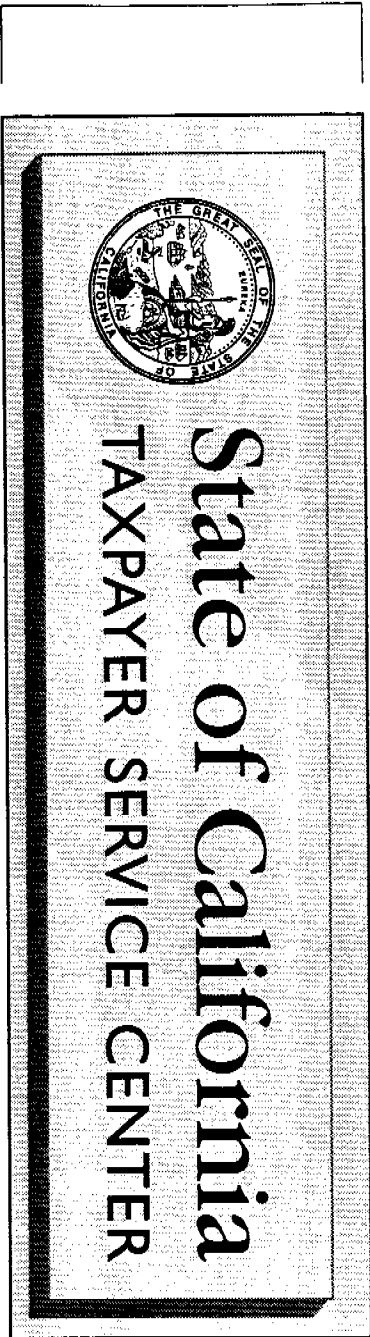
POWER

3321 Power Inn Road
Sacramento, CA



PLAN VIEW

17'-0"



5'-0"

ILLUMINATED SIGNAGE

PRELIMINARY 4 DECEMBER 1997
REVISED 29 JANUARY 1998
REVISED 3 APRIL 1998
REVISED 6 JULY 1998
REVISED 10 JULY 1998

SCALE: 3/8" = 1'-0"

SPECIFICATIONS:

FABRICATE AND INSTALL ONE (1) SINGLE FACED INTERNALLY ILLUMINATED WALL MOUNTED DISPLAY

CABINET:

FABRICATED ALUMINUM CABINET WITH LIGHT TEXCOAT FINISH PAINTED TO MATCH BUILDING

FACE:

SEAL: ROUT OUT ALUMINUM (CIRCLE) BACKED WHITE ACRYLIC WITH DETAIL COMPUTER CUT @3M VINYL 3630-63 RUST BROWN APPLIED FIRST SURFACE WITH @3M WHITE VINYL DIFFUSER APPLIED SECOND SURFACE

COPY: ROUT OUT ALUMINUM BACKED WHITE ACRYLIC OVERLAYED WITH @3M VINYL 3630-63 LT. RUST BROWN APPLIED FIRST SURFACE

ILLUMINATION:
FLUORESCENT

ELECTRICAL:
277 VOLT

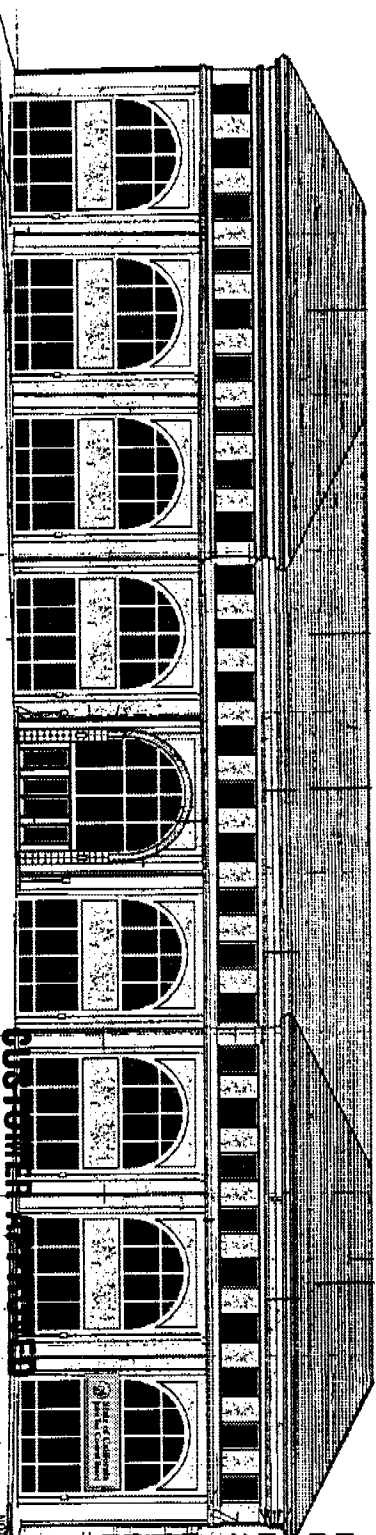
NOTE:
VERIFY ALL DIMENSIONS, BUILDING COLOR SPECIFICATIONS, AND INSTALLATION CONDITIONS AT SITE

NOTE: THIS DRAWING IS INTENDED FOR GRAPHIC ELEMENTS AND NOT INTENDED FOR ACTUAL FABRICATION. FABRICATION TECHNIQUES VARY AND CHANGES MAY OCCUR. ILLUSTRATION IS AS ACCURATE AS POSSIBLE BASED ON INFORMATION PROVIDED.

Specialties & Solutions SINCE 1846

Pacific Neon Company

1576 SUCCA AVE., SACRAMENTO, CA 95815 • 916.927.8527 FAX 916.927.2414 © 1997



NORTH ELEVATION @ 1" = 30'-0"

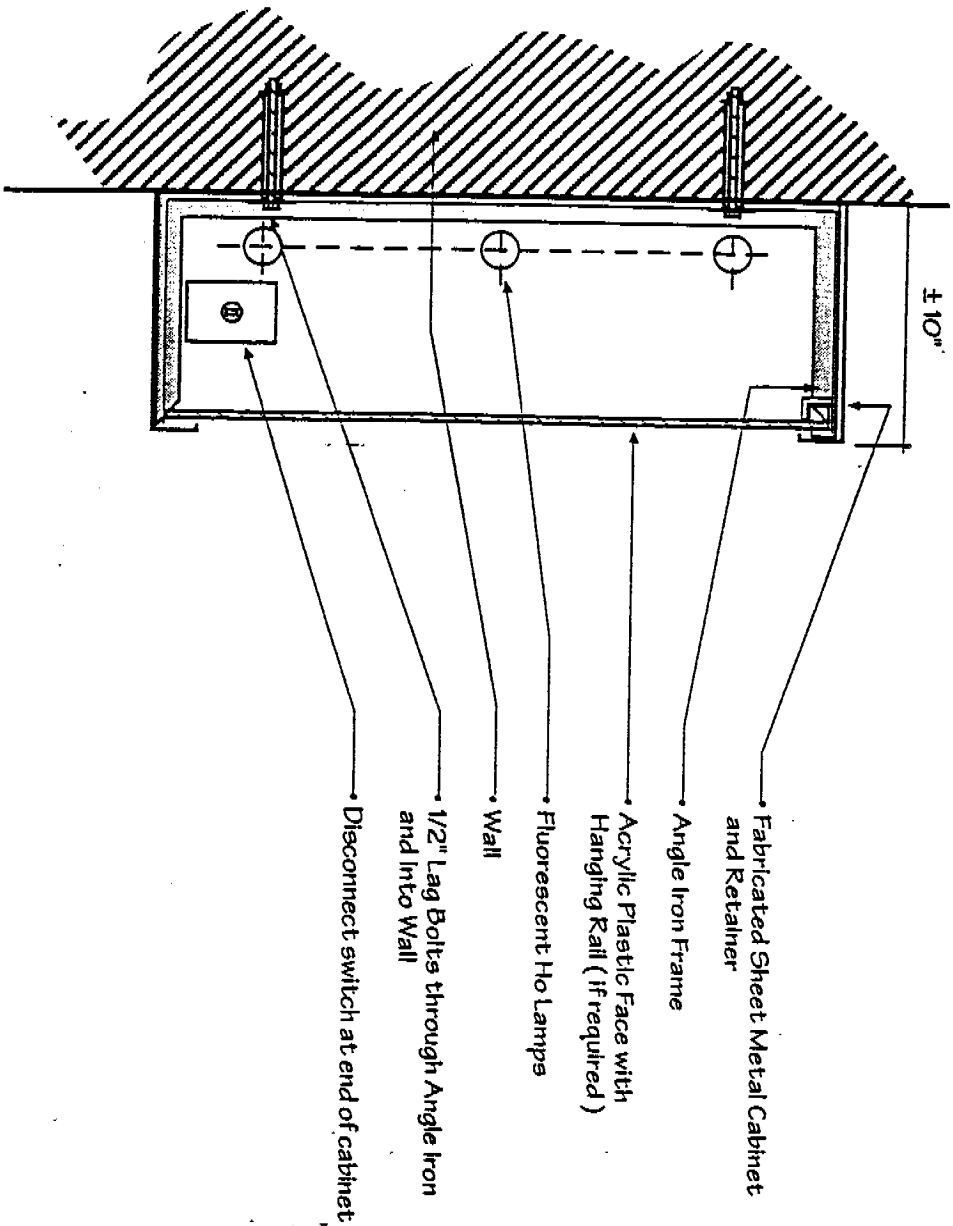
BY _____ DATE _____
WORKING DWGS

CLIENT: STATE OF CALIFORNIA ADDRESS: 97-1413 GARY YUKE LOCATION: 3321 POWER INN RD, SACRAMENTO, CA
DATE: 4 DEC 97/REV 29 JAN 98 / REV 3 APR 98 / REV 6 JULY 98 / REV 10 JUL 98 SHEET: 2 OF 4



APPROVED

Typical Cabinet Display Installation



- Fabricated Sheet Metal Cabinet and Retainer
- Angle Iron Frame
- Acrylic Plastic Face with Hanging Rail (if required)
- Fluorescent Ho Lamps
- Wall
- 1/2" Lag Bolts through Angle Iron and Into Wall
- Disconnect switch at end of cabinet

ILLUMINATED S/F CABINET INSTALLATION

SECTION DETAIL AT LEFT IS REPRESENTATIVE OF A TYPICAL ILLUMINATED CABINET DISPLAY INSTALLATION.

WALL MATERIAL AND/OR ELECTRICAL ACCESS MAY DIFFER FROM ILLUSTRATION.

PLEASE REFER TO ENCLOSED AND/OR ATTACHED DETAILS, ORIGINAL ARCHITECTURAL INFORMATION OR FIELD VERIFICATION FOR ACTUAL ON SITE WORKING CONDITIONS

Cabinet To Wall Attachment - Typical

MODEL: VARIOUS
DATE: 16 SEPT 96

AKU011: 96-0000

IC00111: VARIOUS

DATE: 10F 1

NOTE: ILLUSTRATIONS AS ACCURATE AS POSSIBLE BASED ON INFORMATION PROVIDED. UNLESS OTHERWISE SPECIFIED, ALL DIMENSIONS ARE IN INCHES. DO NOT USE FOR FINAL MEASUREMENTS.

Pacific Neon Company
1916-1995

Pacific Neon Company

1575 S. MAIN AVE., SPOKANE, WA 99205 - 509.327.9527 FAX 509.327.2111 ©1995