

RESOLUTION NO. RA 81-058

Adopted by the Redevelopment Agency of the City of Sacramento

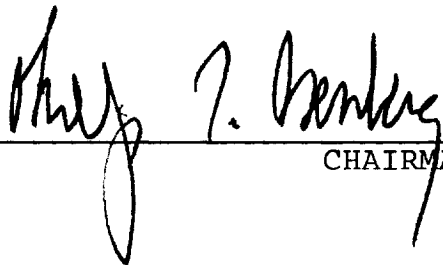
August 11, 1981

AUTHORIZING LOT LINE ADJUSTMENT AND  
DISPOSITION OF PROPERTY TO CITY OF SACRAMENTO  
AND HOUSING AUTHORITY OF THE CITY OF SACRAMENTO  
SINGLEPERSONS FACILITY - BANNON STREET

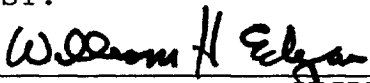
BE IT RESOLVED BY THE REDEVELOPMENT AGENCY OF THE  
CITY OF SACRAMENTO:

Section 1. The Interim Executive Director is authorized to seek a lot line adjustment between Parcel A and Parcel B, as defined by the attached Exhibit "A", relating to the Singlepersons Facility on Bannon Street.

Section 2. Upon resolution of the lot line adjustment, the Redevelopment Agency shall deed to the Housing Authority of the City of Sacramento and to the City of Sacramento for nominal consideration, Parcels A and B, respectively, as defined on the attached Exhibit "A" and subsequently adjusted by the lot line adjustment.

  
\_\_\_\_\_  
CHAIRMAN

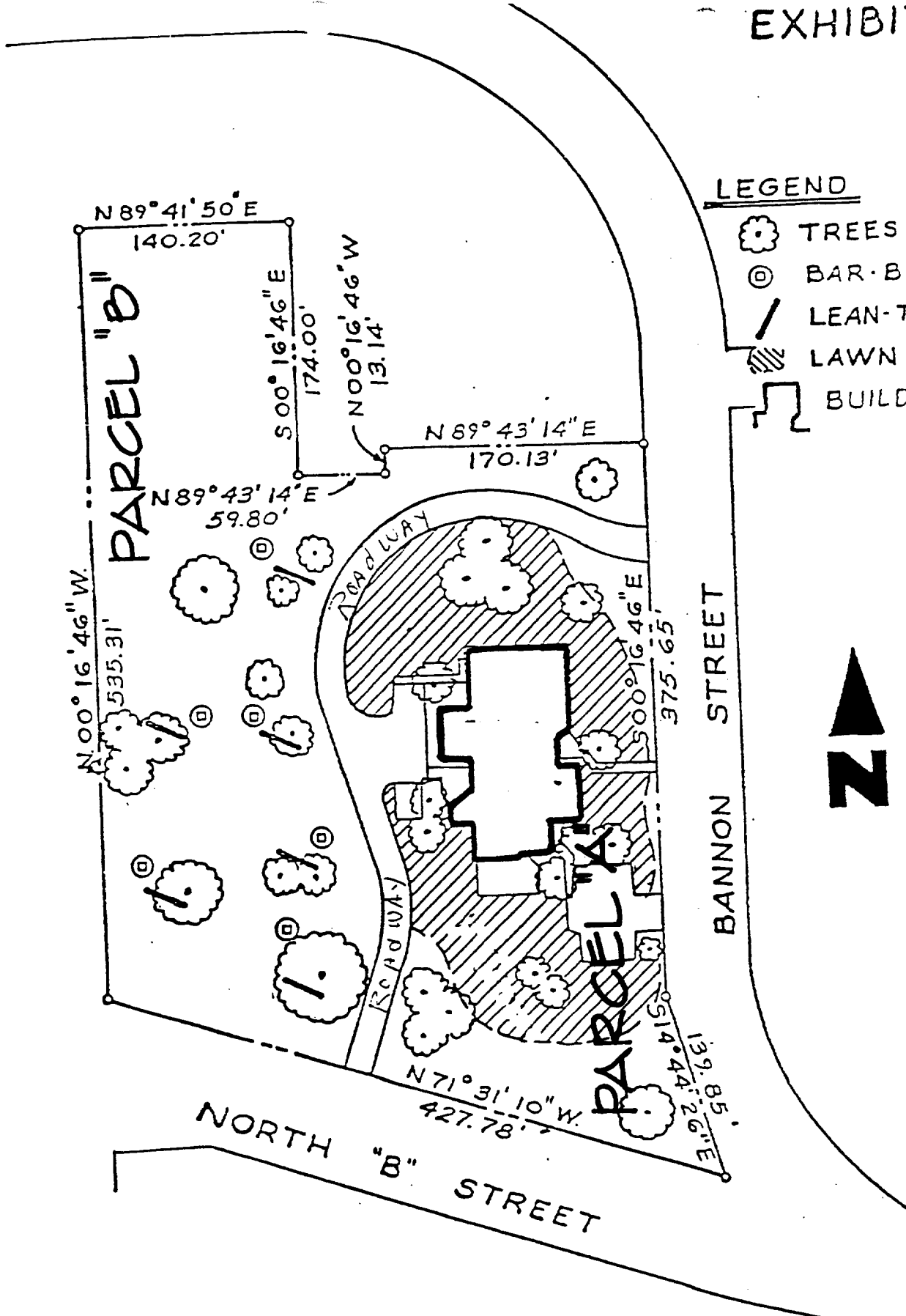
ATTEST:

  
\_\_\_\_\_  
SECRETARY

RESOLUTION No. RA 81-058

AUG 11 1981

# EXHIBIT "A"



SINGLE PERSON'S FACILITY

RESOLUTION No. RA 81-058 (7)  
AUG 11 1981

PARCEL "A"

Parcel A on Exhibit A consists of all that land which is bounded as follows: by the "roadway" on the North and West, by North "B" Street on the South, and by Bannon Street on the East.

PARCEL "B"

Parcel "B" on Exhibit A consists of all that land which is known as the Singleperson's Facility excepting therefrom that property described as Parcel "A" above.

RESOLUTION NO. RA 81-058 -A

Adopted by the Redevelopment Agency of the City of Sacramento

August 11, 1981

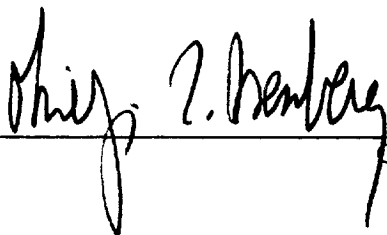
ESTABLISHING CHIEF OF CENTRAL SERVICES  
CLASSIFICATION AND SALARY RANGE  
PURSUANT TO MANAGEMENT STUDY REPORT #3

BE IT RESOLVED BY THE REDEVELOPMENT AGENCY OF THE CITY  
OF SACRAMENTO:

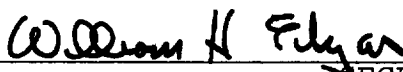
Section 1. Exempt Service. The following classifica-  
tion is hereby established:

<u>Class Title</u>	<u>Salary Schedule No.</u>	<u>Range No.</u>	<u>Approx. Monthly Salary Range</u>
Chief of Central Services	I	8	\$2462-\$2997

Section 2. The Employer-Employee Relations Policy is  
hereby amended to add the above referenced classification to the  
Managerial and Confidential Unit.

  
\_\_\_\_\_  
CHAIRMAN

ATTEST:

  
\_\_\_\_\_  
SECRETARY

RESOLUTION No. RA 81-058-A

AUG 11 1981