

CITY PLANNING COMMISSION

1231 'I' STREET, SUITE 200, SACRAMENTO, CA 95814

APPLICANT	Ellis and Ellis Signs & Displays, 2401 Manning St. Sacramento, CA 95815				
OWNER	Sutter Community Hospital of Sacramento, 2020 I Street, Sacramento, CA 95814				
PLANS BY	Riddle/Johnson, 211 Fort Pitt Blvd. Pittsburg, PA 15222				
FILING DATE	7-25-86	ENVIR. DET.	Cat Ex. 15311(a)	REPORT BY	DH:tc
ASSESSOR'S-PCL. NO.	007-0114-003				

- APPLICATION:**
- A. Special Permit to allow exterior signage for Sutter General Hospital on 2.42+ developed acres in the Hospital (H) zone.
 - B. Variance to locate monument signs in the 25 foot setback area.
 - C. Variance to exceed six foot height limit by one foot for monument signs.

LOCATION: 2801 L Street

PROPOSAL: The applicant is requesting the necessary entitlements to establish a sign program for Sutter General Hospital.

PROJECT INFORMATION:

1974 General Plan Designation:	Commercial & Office
1980 Central City Community Plan Designation:	General Commercial
Existing Zoning of Site:	Hospital and Transportation Corridor
Existing Land Use of Site:	Hospital and Parking Structure

Surrounding Land Use and Zoning:	Setbacks:	Required	Provided
North: Offices; C-2	Front:	25'	25'
South: Medical Hospital; C-2	Side(Int):	25'	0'
East: Parking & Commercial; TC	Side(St):	25'	0'
West: Sutters Fort; C-2	Rear:	15'	10'

Property Dimensions:	325' x 325' for Hospital; 325' x 325' for Parking Structure
Property Area:	4.4+ acres
Square Footage of Building:	424,469+ square feet hospital
Height of Building:	Six stories, 94 feet
Topography:	Flat
Street Improvements:	Existing
Utilities:	Existing
Sign Materials:	Cement, Aluminum, Tile
Sign Colors:	Stainless steel, blue, white
illumination:	Ground mounted spotlights: #1,5,12,27 Individually Illuminated Letters: #13,25 (Backlit) Internally Illuminated: #22,30,31,36,37

Project Background: On February 1, 1983, the City Council approved a Rezoning, Special Permit and adopted findings of overriding consideration to allow

construction of a six-story, 424,469+ square foot 386 bed hospital and parking structure (P-9600). The applicant is requesting a special permit to establish a directional and identification sign program for the hospital and parking structure. The hospital is nearing completion. The applicant was required to submit an overall sign program as a condition of approval of a special permit to construct two 68 square foot attached signs, (P86-080), approved March 13, 1986, by the Planning Commission.

Project Evaluation: Staff has the following comments:

- A. The subject site consists of two parcels; a 2.2+ acre lot zoned General Commercial and containing the new Sutter General Hospital; and a 2.2+ acre lot developed with a two story parking structure with parking under the freeway in the Transportation Corridor Zone. The hospital site is designated for commercial uses in both the General Plan and the 1980 Central City Community Plan. The parking lot site is designated Transportation Corridor under the zoning ordinance. Freeway rights of way under the 1980 Central City Community Plan did not receive a designation since they are owned by the State of California. All land uses in the TC zone require a special permit from the Planning Commission. The proposed sign program affects both locations.
- B. The signs can be identified by three major categories:
1. Emergency
 2. Directional
 3. Project Identification

Sign structures include the following:

1. 7 feet high x 10 feet wide monument signs; #1,5,12,27
2. 4 feet high x 4 feet side monument signs, total of seven
3. 5 feet high x 2 feet wide monument signs, total of four
4. Numerous directional signs affixed to buildings.

Staff has prepared Exhibits A through L to depict the sign locations and characteristics. Of the signs proposed, the following issues were identified.

1. The four corner monument project identification signs, #1,5,12 and 27 contain three to four messages which occupy half of the area provided by the seven foot high and ten foot long monument. Staff does not support such a massive monument to locate signs upon. Staff recommends reducing the size of the monuments 1, 5, 12 and 27 to six feet in height and eight feet in width. This would negate the need for a variance to exceed the maximum six foot height limit for monument signs in the Hospital zone (See Exhibit D).

2. All monument directional signs identified on Exhibits B and C as Layout F/G28 or G/G28 measure four feet in height and four feet three inches in width with messages occupying various dimensions not exceeding three feet in width and two feet in height (see Exhibit E).
3. All post and panel signs identified on Exhibits B and C as Layout H/G32, a total of 2 double face and two single face signs, measure two feet four inches in width and five feet in height. Staff recommends that those post and panel signs be reduced in height to four feet to not be so intrusive. Affected signs are: #3, 10A, 10B, 15A, 15B and 26 (See Exhibit H).
4. The proposed signage for the parking lot structure signs #30 to 39 appear to be adequate in number and location. The "Hospital Parking" signs #30, 31, 36 and 37 located on the corners of the structure, measure six and a half feet in length and nine inches in height, an internally illuminated sign with cut-out letters mounted on the concrete bulkhead provided by the parking structure. The signs will identify the structure for hospital patrons.

C. Summary - With the above listed modifications to the dimensions of the monument signs, staff recommends approval of the overall sign program. The variance to exceed the six foot height limit for a monument sign should be denied since the reduction from seven feet to six feet of the monument is recommended. The variance to locate signage within the 25 foot building setback area is supported by staff in that similar requests, Mercy Hospital (P83-195) allowed seven signs in the 25 foot setback area. As proposed, a total of 16 signs are located within the setback area. With the reduction in area of the proposed signs, staff supports the number and locations of the various signs.

D. Agency Comments: The proposed project was reviewed by the City Traffic Engineer and Building Inspections Division with no adverse comments received.

Environmental Determination: The proposed project is exempt from environmental review pursuant to State EIR Guidelines (CEQA Section 15311(a)).

RECOMMENDATION: Staff recommends the following actions:

- A. Approve the Special Permit to allow exterior signage for Sutter General Hospital subject to conditions and based upon findings of fact which follow;
- B. Approve the Variance to locate monument signs in the 25 foot setback area in the Hospital Zone subject to conditions and based upon findings of fact which follow;
- C. Deny the Variance to exceed the six foot height limit by one foot for monument signs based upon findings of fact which follow.

Conditions - Special Permit and Variance

1. The four corner monument signs shall be reduced in area to not exceed six foot in height and eight feet in width. Signs affected are numbers 1, 5, 12 and 27 (Exhibit J).
2. All post and panel signs identified as Layout H/G32 shall be reduced in height to four feet. Signs affected are numbers 3, 10A and 10B, 15A, 15B and 26 (Exhibit H).
3. All signs shall be issued sign permits from the City Building Division. All exterior lighting and internally lit signs shall be constructed and placed as shown on the attached Exhibits A to L.
4. Any additional signs or relocation of proposed signs shall be reviewed and approved by the Planning Director.

Findings of Fact - Special Permit and Variance Approval

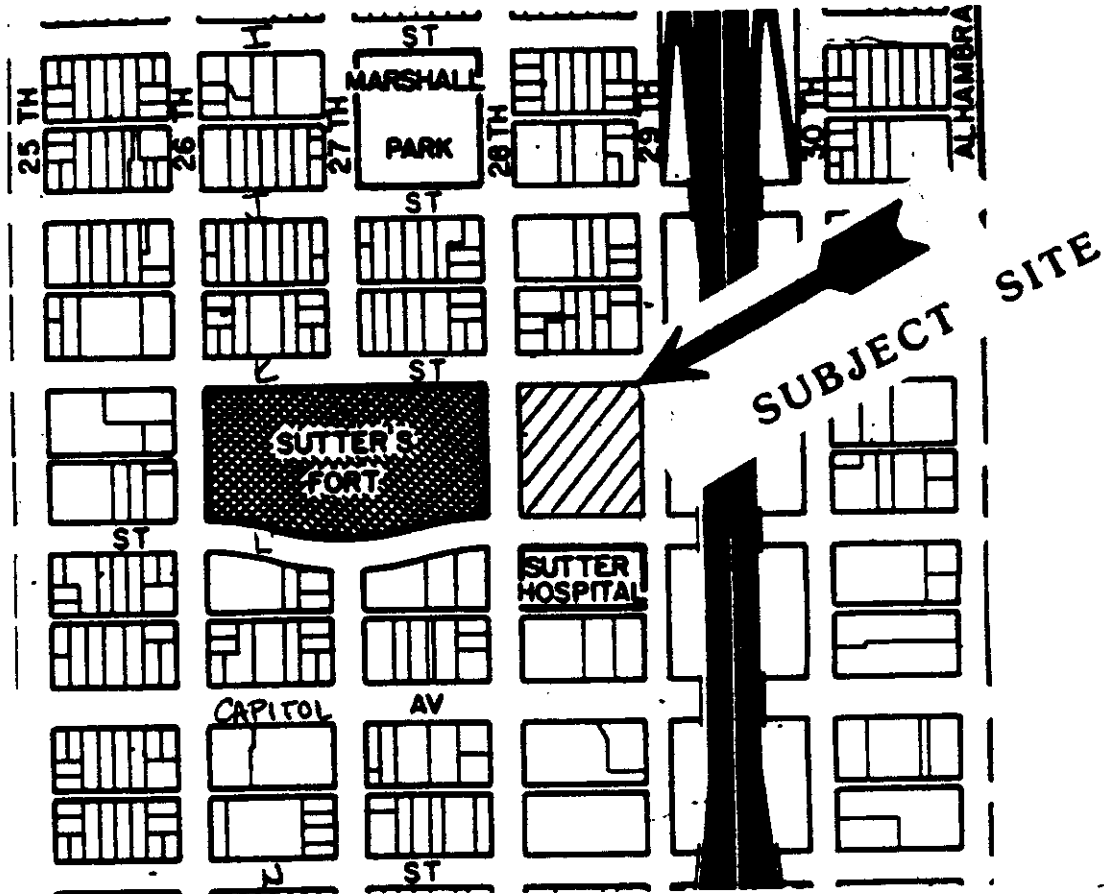
1. The proposed project is based upon sound principles of land use in that:
 - a. The proposed newly constructed hospital will provide health care services for the community and the region.
 - b. The proposed signs will assist in project identification.
2. The proposed project, as conditioned, will not be detrimental to the public health, safety or welfare, nor result in the creation of a nuisance in that:
 - a. The sign master plan provides for safety in direction of vehicular movement.
 - b. Signs will not obscure visibility along the adjacent streets.
 - c. Signs will be appropriately designed to be incorporated into the landscaping.
3. The variance to allow signs in the 25 foot setback does not constitute a special privilege extended to one property owner in that under similar circumstances, hospital identification and directional signs have been allowed in the setback area.
4. The variance does not constitute a use variance in that signs are allowed in the H zone.
5. The special permit and variance are consistent with the General Plan goal to provide safe, stable and attractive residential areas in which to live; functional and efficient commercial and industrial areas in which to work.

6. The proposed project is consistent with the City's Discretionary Interim Land Use Policy in that the site is designated for General Commercial and the proposed sign program conforms with the 1980 Central City Community Plan Designation.

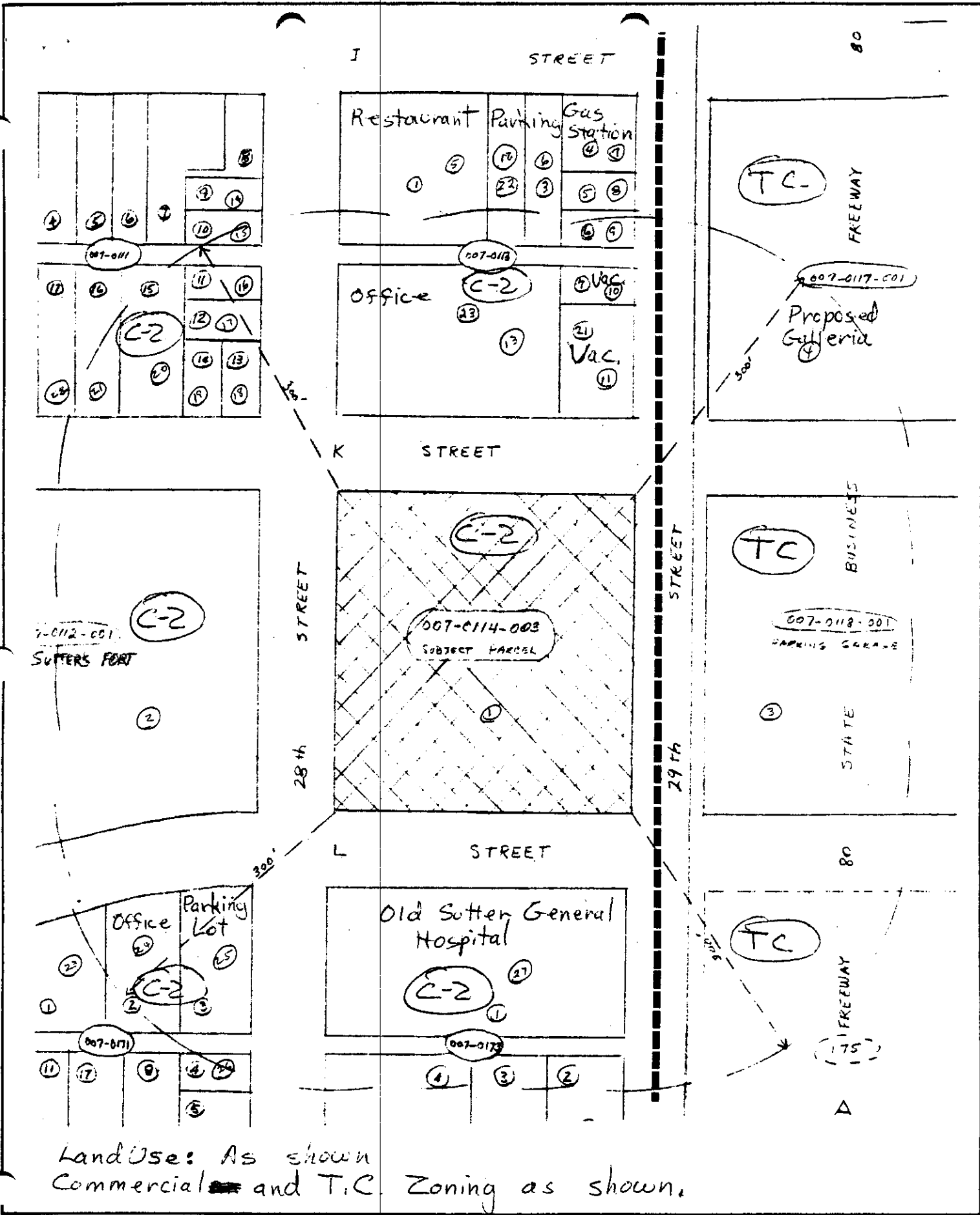
Findings of Fact - Denial Variance

1. Granting the Variance would constitute a special privilege extended to one property owner in that similar monument signs observe the six foot height limit.
2. The variance, if granted, would adversely affect the health and safety of people working or residing in the neighborhood in that:

a proliferation of larger than necessary signs would exist.



VICINITY MAP



Land Use: As shown
 Commercial and T.C. Zoning as shown.

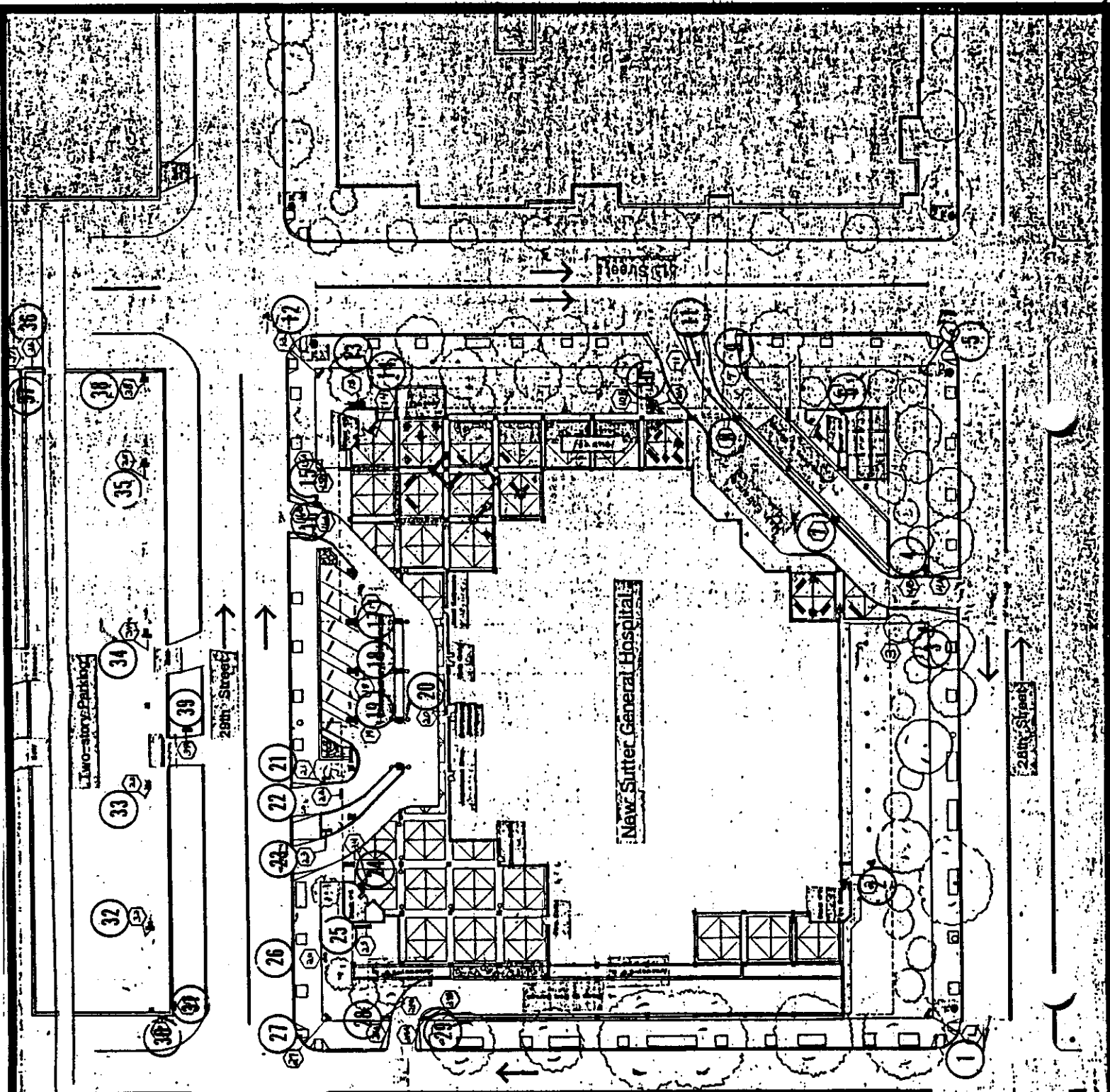
LAND USE & ZONING MAP

EXHIBIT A SIGN PROGRAM

GENERAL NOTES

- 1. ACTUAL SIGN LOCATIONS TO BE DETERMINED ON SITE BY LANDSCAPE ARCHITECT AND HOSPITAL.
- 2. THE FOLLOWING SIGNS ARE ILLUMINATED AS INDICATED:
 - GROUND-MOUNTED SPOTLIGHTS # 1, 5, 12, 27
 - INDIVIDUALLY ILLUMINATED LETTERS # 1, 2, 3, 4, 5, 6, 7, 8, 9, 10, 11, 12, 13, 14, 15, 16, 17, 18, 19, 20, 21, 22, 23, 24, 25, 26, 28, 29, 30, 31, 32, 33, 34, 35, 36, 37, 38, 39

Page 6



P-86-304

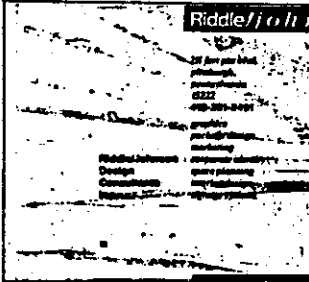
August 23, 1982

stem

SITE SCHEDULE

EXHIBIT B

NO.	MESSAGE	OUT	DETAILS			REMARKS/TYPE
			FABR.	MOUNT.		
1	SUTTER GENERAL HOSPITAL EMERGENCY ENTRANCE ON 29TH STREET	D-627	C-627	A-627		LIGHTED BY GROUND SPOTS. MONOLITH
2	(SYMBOL) NO ENTRY	G-632	L-632	L-632		REGULATORY-DOOR-MOUNTED
	← MAIN ENTRANCE EMERGENCY ENTRANCE ON 29TH STREET	H-632	A-632	H-632		PEDESTRIAN DIRECTIONAL-POST AND PANEL
4A	(SYMBOL) NO ENTRY	G-628	C-628	B-628		DF/MONOLITH-VEHICULAR DIRECTIONAL
4B	→ RIGHT TURN ONLY PARKING	F-628	C-628	B-628		DF/MONOLITH-VEHICULAR DIRECTIONAL
5	SUTTER GENERAL HOSPITAL EMERGENCY ENTRANCE ON 29TH STREET PARKING MAIN ENTRANCE	D-627	C-627	A-627		LIGHTED BY GROUND SPOTS/MONOLITH
6	(SYMBOL) NO ENTRY	G-632	L-632	L-632		RG-DOOR MOUNTED
7	(SYMBOL-NO PARKING) PATIENT PICK-UP AND DROP-OFF ONLY	C-629	B-629	E-629		RG-COLUMN-MOUNT
9	(SYMBOL-NO PARKING) PATIENT PICK-UP AND DROP-OFF ONLY	C-629	B-629	E-629		RG-COLUMN-MOUNT
7	DELIVERIES AND PERMITS ONLY	D-629	K-632	K-632		RG-U'CHANNEL-MOUNT
8A	← MAIN ENTRANCE	H-632	A-632	H-632		DF/PEDESTRIAN POST AND PANEL
	↑ EMERGENCY ENTRANCE					
8B	↗ MAIN ENTRANCE	H-632	A-632	H-632		DF/PEDESTRIAN POST AND PANEL
11	→ MAIN ENTRANCE	F-628	C-628	B-628		MONOLITH-VEHICULAR DIRECTIONAL
12	SUTTER GENERAL HOSPITAL EMERGENCY ENTRANCE ON 29TH STREET MAIN ENTRANCE PARKING	D-627	C-627	A-627		LIGHTED BY GROUND SPOTS/MONOLITH
13	SUTTER GENERAL HOSPITAL	D-626	B-626	F-626		INDIVIDUALLY BACK-LIT LETTERS
	(SYMBOL) NO ENTRY	G-632	L-632	L-632		RG-DOOR MOUNT
15A	← EMERGENCY ENTRANCE ← MAIN ENTRANCE	H-632	A-632	H-632		DF/PEDESTRIAN POST AND PANEL
15B	→ MAIN ENTRANCE	H-632	A-632	H-632		DF/PEDESTRIAN POST AND PANEL
16A	→ RIGHT TURN ONLY PARKING MAIN ENTRANCE	F-628	C-628	B-628		DF/MONOLITH-VEHICULAR DIRECTIONAL
16B	(SYMBOL) NO ENTRY	G-628	C-628	B-628		D.F. MONOLITH VEHICULAR DIRECTIONAL
17	EMERGENCY PARKING MAXIMUM 20 MINUTES	A-629	B-629	E-629		RG-COLUMN-MOUNT
18	EMERGENCY PARKING MAXIMUM 20 MINUTES	A-629	B-629	E-629		RG-COLUMN-MOUNT
19	EMERGENCY PARKING MAXIMUM 20 MINUTES	A-629	B-629	E-629		RG-COLUMN-MOUNT
20	EMERGENCY	E-630	C-630	B-630		STUD-MT. ALUM. LETTERS
21	→ EMERGENCY ENTRANCE	F-628	C-628	B-628		MONOLITH VEHICULAR DIRECTIONAL
22	EMERGENCY BASIC EMERGENCY MEDICAL SERVICE PHYSICIAN ON DUTY	A-630	B-630	F-630		INTERNALLY-ILLUMINATED
23	→ AMBULANCE ONLY	F-628	C-628	B-628		MONOLITH VEHICULAR DIRECTIONAL
24	(SYMBOL) NO ENTRY	G-632	L-632	L-632		RG-DOOR MOUNTED
25	SUTTER GENERAL HOSPITAL	E-626	B-626	F-626		INDIVIDUALLY BACK-LIT LETTERS
	← EMERGENCY ENTRANCE MAIN ENTRANCE	H-632	A-632	H-632		PEDESTRIAN DIRECTIONAL POST AND PANEL
27	SUTTER GENERAL HOSPITAL EMERGENCY PARKING MAIN ENTRANCE	D-627	C-627	A-627		LIGHTED BY GROUND SPOTS/MONOLITH



PROJECT: SUTTER GENERAL HOSPITAL

DRAWING: SITE SCHEDULE

DATE: 1/14/86

REVISED: 3/13/86

DRAWN BY: JM

G13-1

item 12

SITE

(cont.)

EXHIBIT C

NO.	MESSAGE	LAYOUT	DETAILS		REMARKS
			FABRIC.	MOUNT.	
28A	(SYMBOL) NO ENTRY	G-628	C-628	B-628	D.F./MONOLITH VEHICULAR DIRECTIONAL
28B	→ RIGHT TURN ONLY	F-628	C-628	B-628	D.F./MONOLITH VEHICULAR DIRECTIONAL
29A	(SYMBOL) NO ENTRY	G-628	C-628	B-628	D.F./MONOLITH VEHICULAR DIRECTIONAL
29B	→ RIGHT TURN ONLY	F-628	C-628	B-628	D.F./MONOLITH VEHICULAR DIRECTIONAL
30	HOSPITAL PARKING	A-631	B-631	C-631	INTERNALLY ILLUMINATED
31	HOSPITAL PARKING	A-631	B-631	C-631	INTERNALLY ILLUMINATED
32	SUTTER GENERAL HOSPITAL MAIN ENTRANCE ↑	E-632	J-632	E-629	PEDESTRIAN DIRECTIONAL POST AND PANEL
33	SUTTER GENERAL HOSPITAL MAIN ENTRANCE ↑	E-632	J-632	E-629	PEDESTRIAN DIRECTIONAL POST AND PANEL
34	SUTTER GENERAL HOSPITAL MAIN ENTRANCE ↑	E-632	J-632	E-629	PEDESTRIAN DIRECTIONAL POST AND PANEL
35	SUTTER GENERAL HOSPITAL MAIN ENTRANCE ↑	E-632	J-632	E-629	PEDESTRIAN DIRECTIONAL POST AND PANEL
36	HOSPITAL PARKING	A-631	B-631	C-631	INTERNALLY ILLUMINATED
37	HOSPITAL PARKING	A-631	B-631	C-631	INTERNALLY ILLUMINATED
38	SUTTER GENERAL HOSPITAL MAIN ENTRANCE →	E-632	J-632	B-629	PEDESTRIAN DIRECTIONAL POST AND PANEL
39	PARKING GARAGE ←	E/632	I/632	I/632	BAND-MOUNT

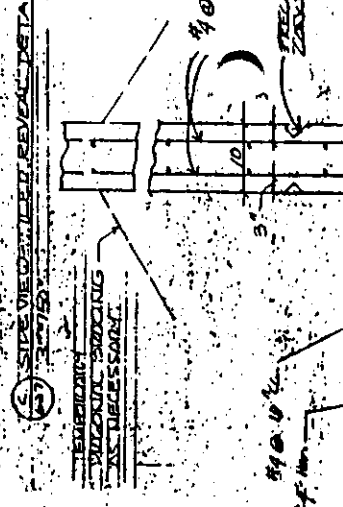
G/3-

P-86-304

8-28-86

G-27

item 19



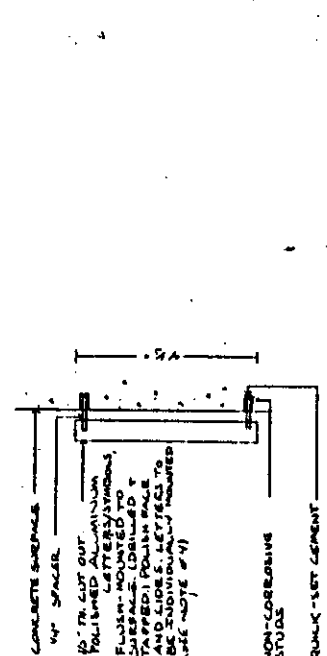
OFFICE CREAM-TILE
VERTICAL SIZE - 2 1/4\"/>

ALL ABOUT TO
MATCH TILE COLUMN
FINISH EDGES
FLUSH TO SURFACE.

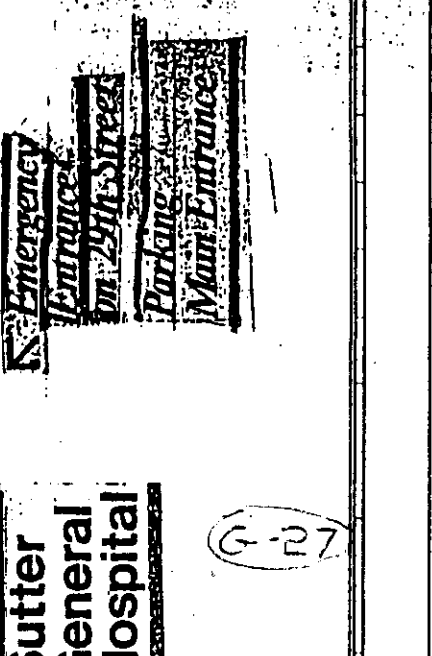
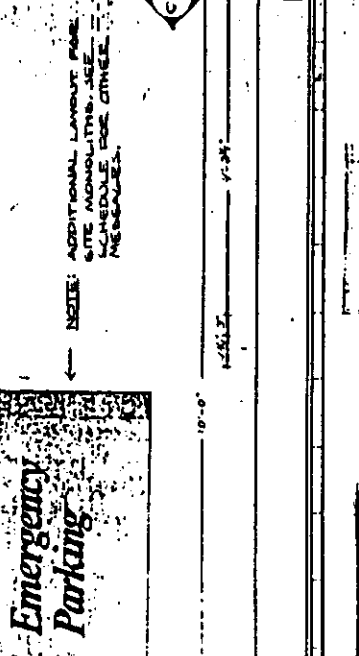
NOTES:

1. PRE-CAST CONCRETE TYPE 10 FINISH EXISTING HOIST FOR BUILDING.
2. CEMENT TILE GRANITE TILE COMBINATION BECKPATE 2 1/2\"/>

BY CONTRACTOR IN PREPARATION TO
INSTALL TELEPHONE IN PLACE. ALL
MATERIALS TO BE INSTALLED
IN ACCORDANCE WITH THE
SCHEDULE FOR OTHER
MEMORANDA.



CONCRETE SHERMAN
1/4\"/>



Sutter General Hospital

B SIDE VIEW - 1/16" DETAIL
3" x 1'-0"

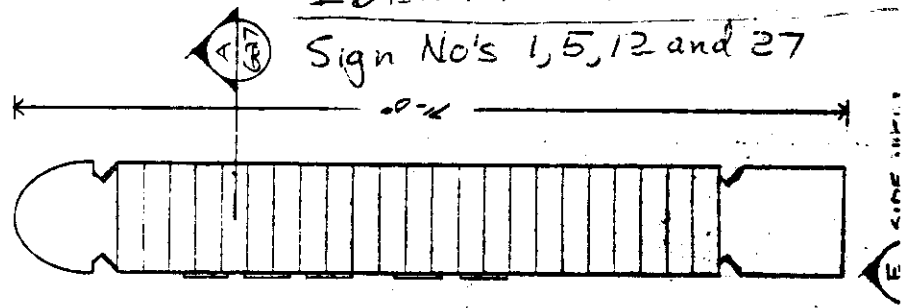
NOTES

- 1. PRECAST CONCRETE EXISTING
- 2. CERAMIC TILE BECKPLAT 9 7/16" x 7 1/16" STANDARD
- 3. GROUND SIGN BY CONTRA MAXIMUM L (NO "HOT" T-C WITH "EY" IN "EMERG" IN (AF-1)

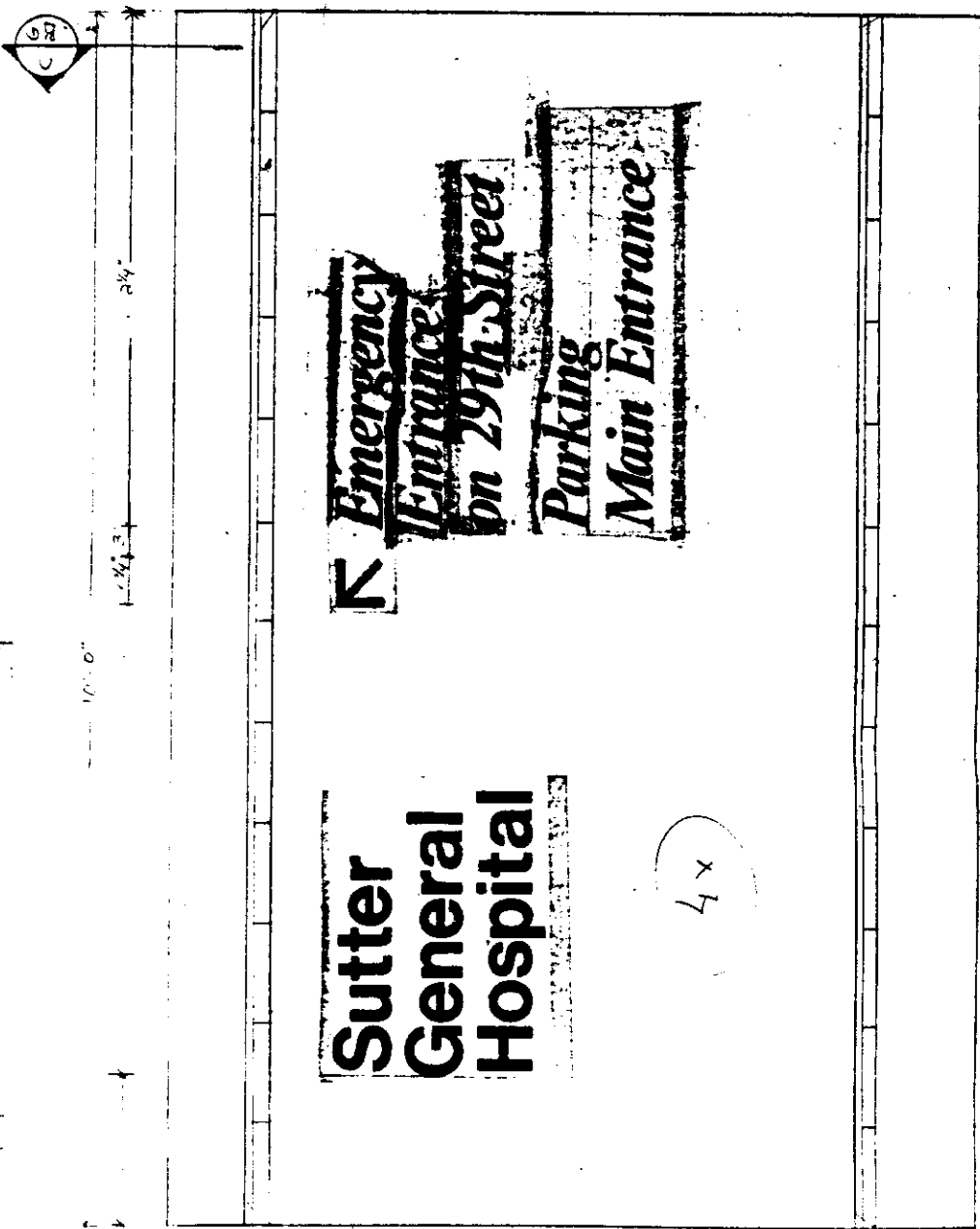
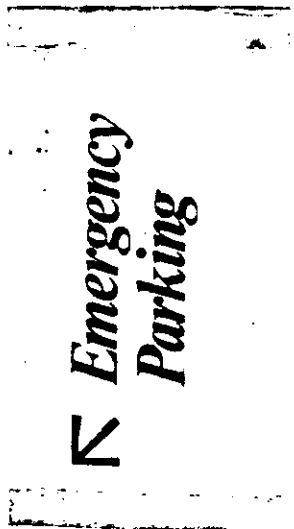
EXHIBIT D

CORNER PROJECT MONUMENT IDENTIFICATION SIGNS

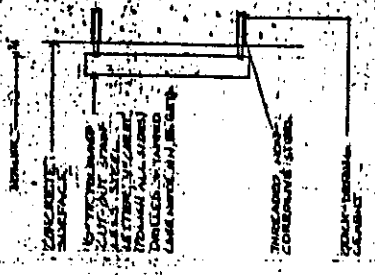
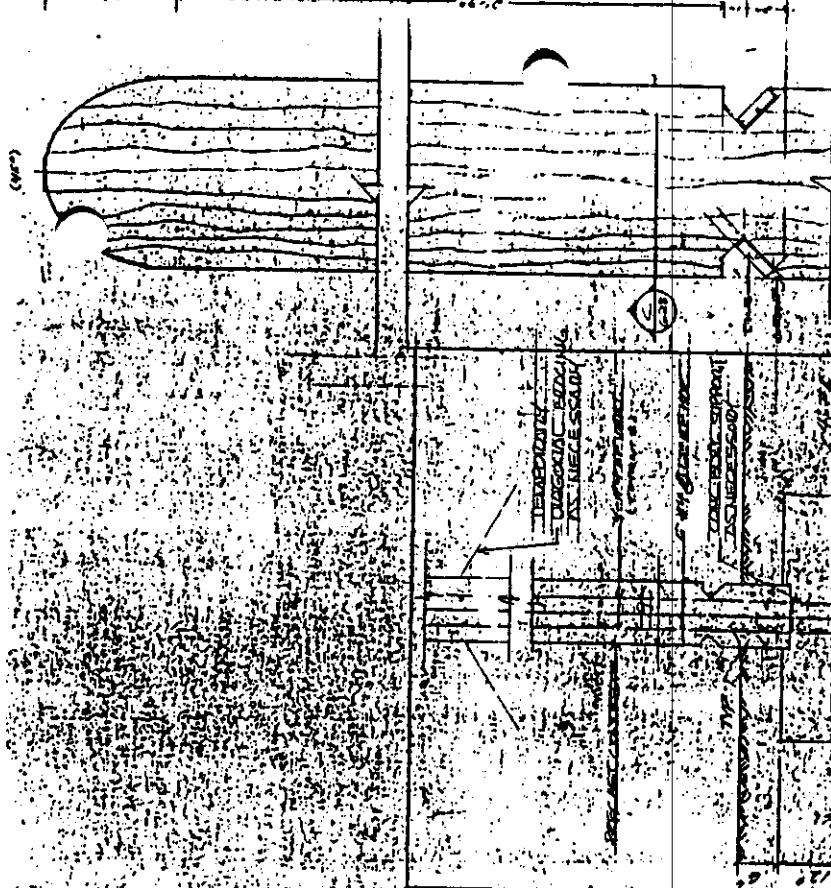
Sign No's 1, 5, 12 and 27



NOTE: ADDITIONAL LAYOUT FOR SITE MONUMENTS. SEE SCHEDULE FOR OTHER MESSAGES.

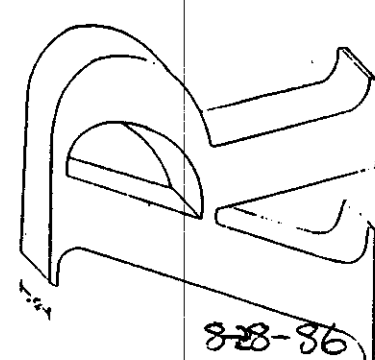


D SITE IDENTIFICATION-DETAILS



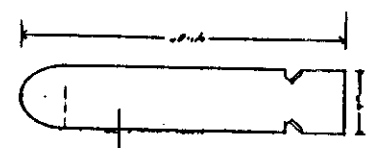
LETTERS AND MOUNTING TO BE SHIPPED IN CRATES

(FOR GENERAL NOTES ON ALL MOUNTING SEE PAGE 200)



LETTERS - (DETAIL) ACTUAL SIZE

828-86



ROUND SPOTLIGHTS SEE PLAN AND NOTE #3

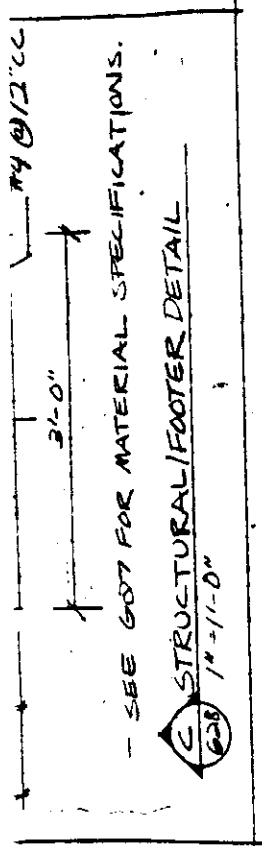
G-28

item 17

4ft x 4ft Monument
 Signs
 Sign No's 4A, 7B, 11, 16A, 16B, 21
 23, 28A & 28B, 29A
 and 29B

Only 1/16

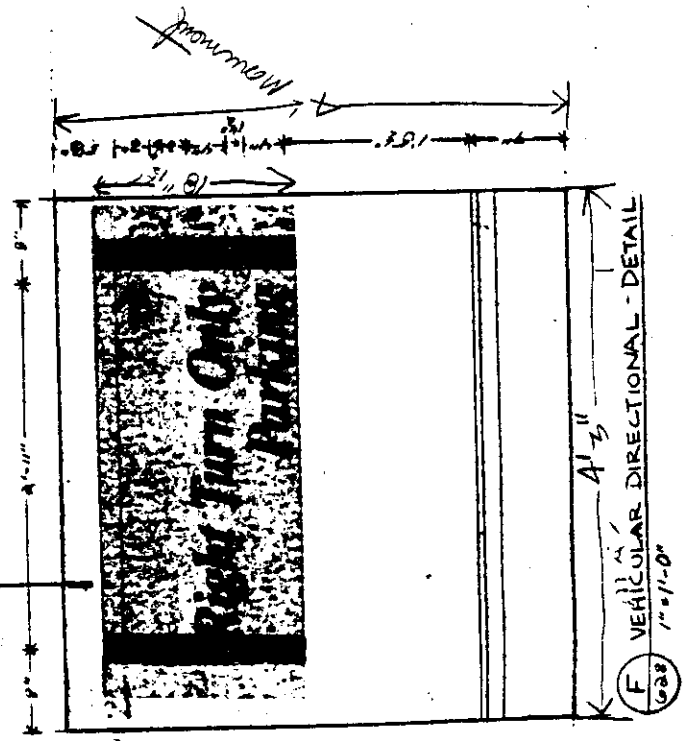
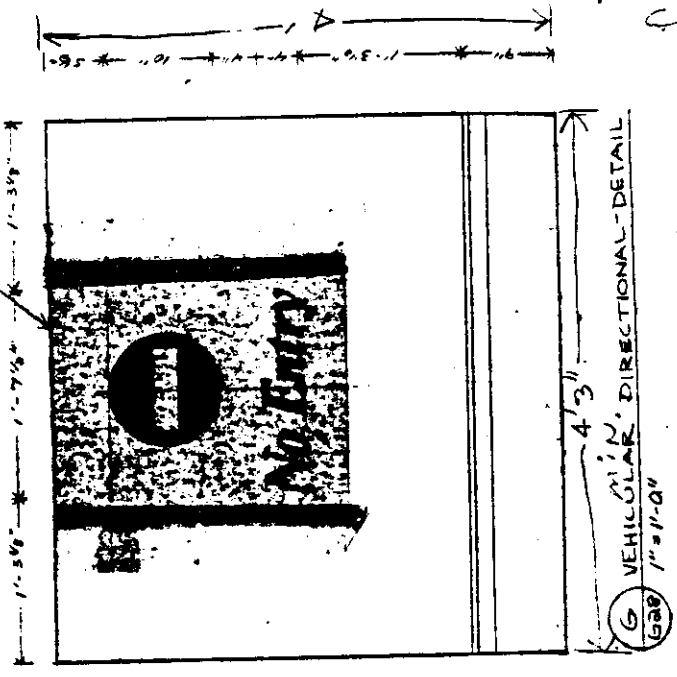

① TILED REVEAL DETAIL
 (128) 3'-0" x 1'-0"



(FOR GENERAL NOTES ON ALL MONUMENTS, SEE PAGE 607)

LETTERS AND ARROWS TO BE CUT OUT OF 1/2" POLISHED STAINLESS STEEL (SEE NOTE #4, PL. 607)

NOTE: SYMBOL TO BE FINISHED WITH: AP-1



7
 from
 4 DF
 3 SE

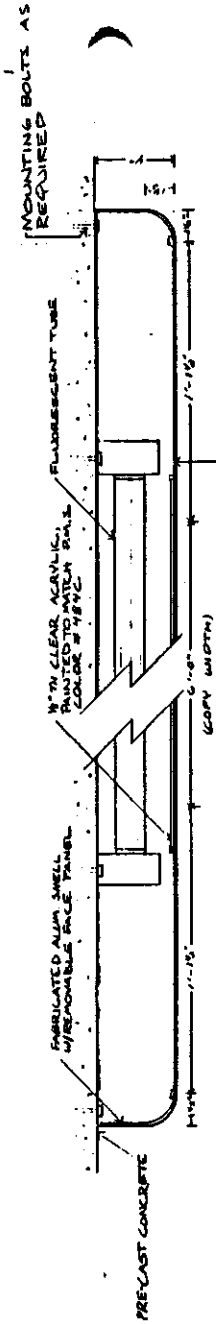
EMERGENCY

Basic Emergency Medical Service Physician on Duty

THIS MESSAGE SHEET ILLUMINATED SIGN ONLY

A TYPICAL LETTER SIZING - BOTH APPLICATIONS

NOTE: CAP. WT. SIGN IS FOR INTERNALLY ILLUMINATED SIGN

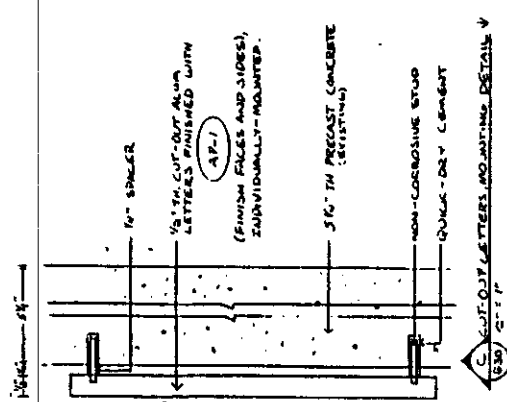
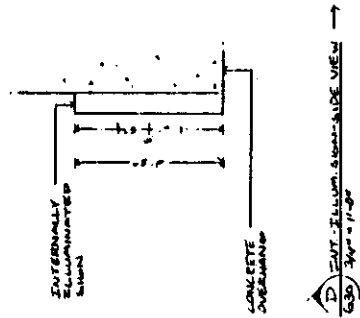


FINISH ALL EXTERIOR SHELL SURFACES OF INTERNALLY ILLUMINATED SIGN WITH:

AP-3

B INTERNALLY ILLUMINATED SIGN - SECTION

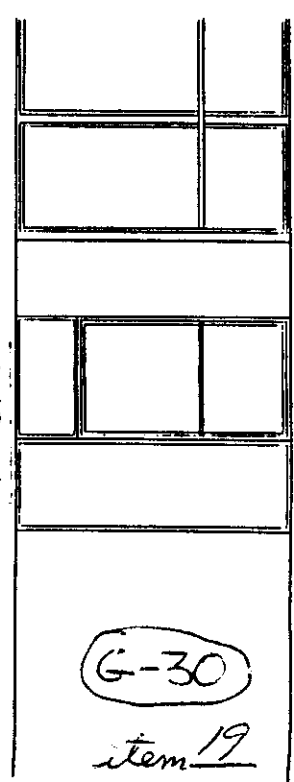
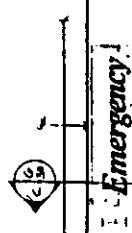
G-30 3/4" x 1/2"



INTERNALLY ILLUMINATE ALUMINUM SIGN W/ COP CUT OUT OF FACE PANEL (1/2" GAP AT COPY CENTER)

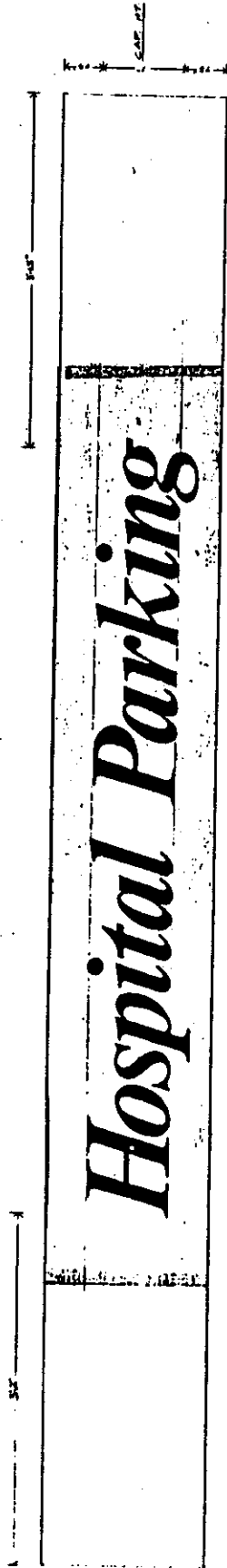
FLUSH-MOUNT TO EDGE OF STRUCTURE CENTRE. SIGN TO LE

EXHIBIT F

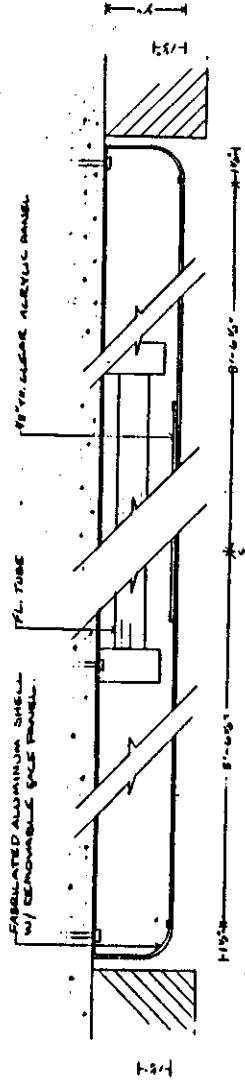


G-30

item 19



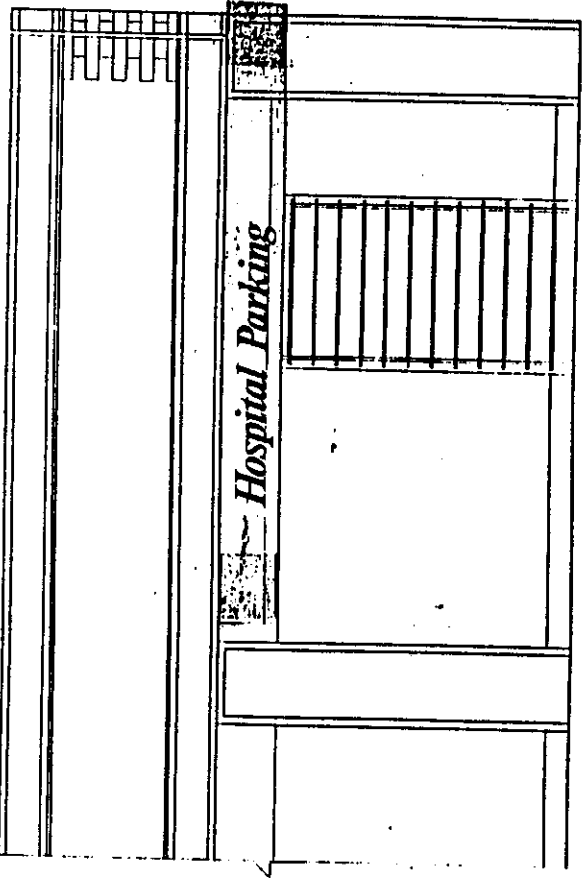
A FACE PANEL - DETAIL
 (3) 1/3" x 1/2" x 0"



B EXTERNALLY ILLUM. SIGN SECTION
 (2) 3" x 11/2"

NOTE: ALUMINUM SHELL TO BE FINISHED ON ALL SURFACES WITH AN-1

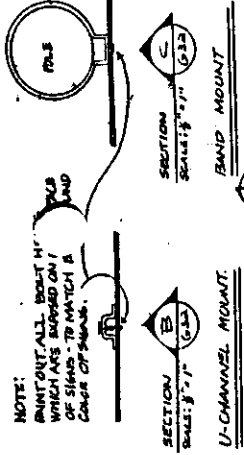
NOTE: FIELD SHEET DIMENSIONS REFER TO FABRICATION.



EXTERNALLY ILLUMINATED SIGN WITH LETTERS CUT OUT OF COMPACTIBLE FACE PANEL. SIGN MOUNTED ON CONCRETE SUBSTRATE.

C PARKING SIGNAGE - ELEVATION
 (2) 1/2" x 11/2" x 0"

G-31



NOTE:
SHIM OUT ALL POSTS BY WHICH ARE BARRIED ON I OF SIGN - TO MATCH A CORNER OF SIGN.

SECTION B
SCALE: 3/4" = 1'

SECTION C
SCALE: 3/4" = 1'

U-CHANNEL MOUNT

BAND MOUNT

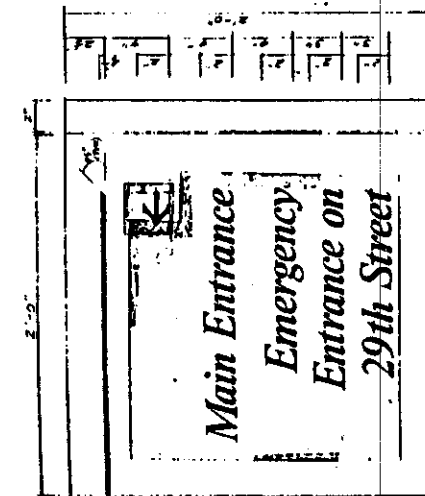
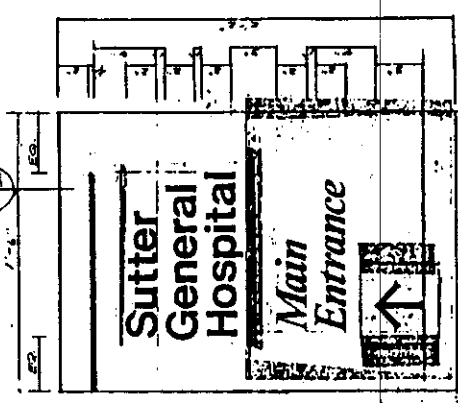
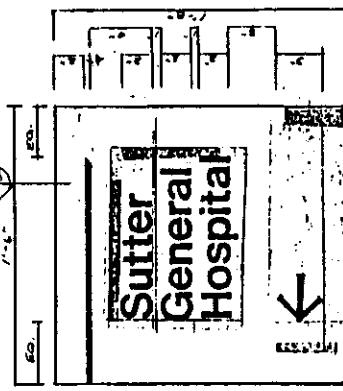
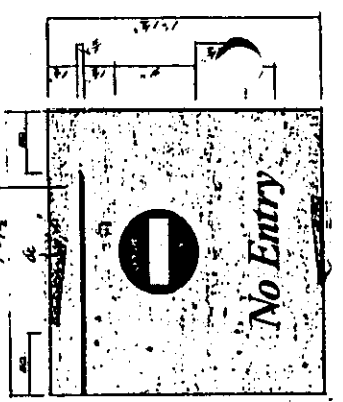
NOTE:
CALLER SPECIFICATIONS FOR ALL SIGNS ON THIS PAGE:

- ALL SIGNS TO BE FABRICATED FROM 5" ALUMINUM EXCEPT FOR ANY STUP MTD SIGNS, WHICH WOULD THEN BE FABRICATED FROM 1/2" ALUM.
- FINAL MOUNTING HEIGHTS OF POSTS, PANEL, SINGLE POST MOUNTED, BAND MTD OR DECORATED - TO BE DETERMINED BY ARCHITECT, LANDSCAPE ARCHITECT & HOSPITAL - TO ALLOW FOR MAXIMUM VISIBILITY IN RELATIONSHIP TO ARCHITECTURE & LANDSCAPING.

GENERAL NOTES

- ALL BORDER BANDS AT TOP OF SIGNS TO FLUSH LEFT AT EDGE OF SIGN'S - CHAIR STOPS FLUSH WITH RIGHT END OF SIGN.
- RIGHT EDGES OF BAND TO RAISE AT 45° ANGLE
- THIS IS TYPICAL FOR ALL ENTRIES & INTERIOR SIGNS

ADDITIONAL FOR POSTS:
SEE P. 67-3
P. 39



DETAIL SCALE: 3/4" = 1' (G)

DETAIL SCALE: 3/4" = 1' (F)

DETAIL SCALE: 3/4" = 1' (E)

DETAIL SCALE: 3/4" = 1' (H)

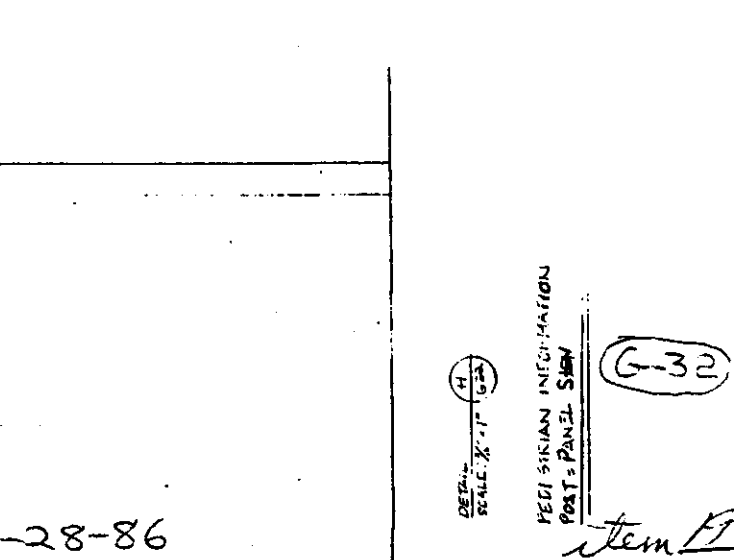
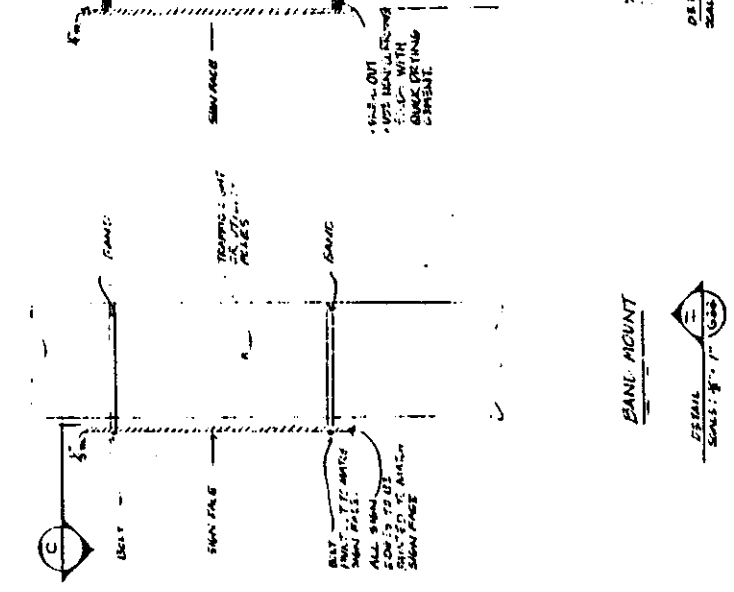
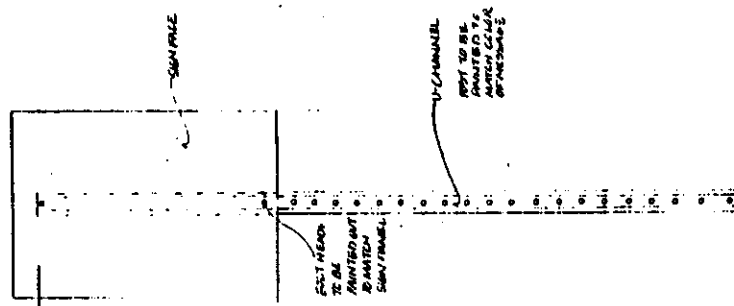
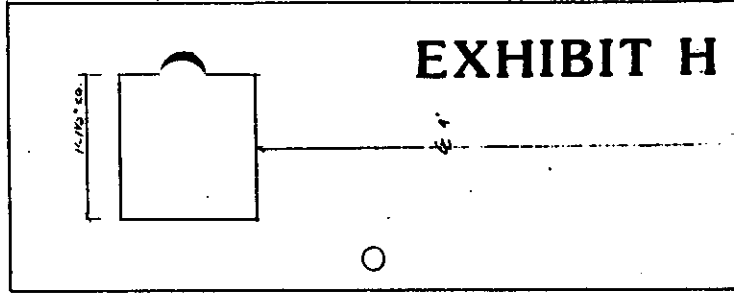


EXHIBIT H

DETAIL SCALE: 3/4" = 1' (A)

POST = PANEL SIGN

G-32

Item 11

8-28-86

POST & PANEL SIGN

Sign No's 3, 10A, 10B, 15A, 15B, 26

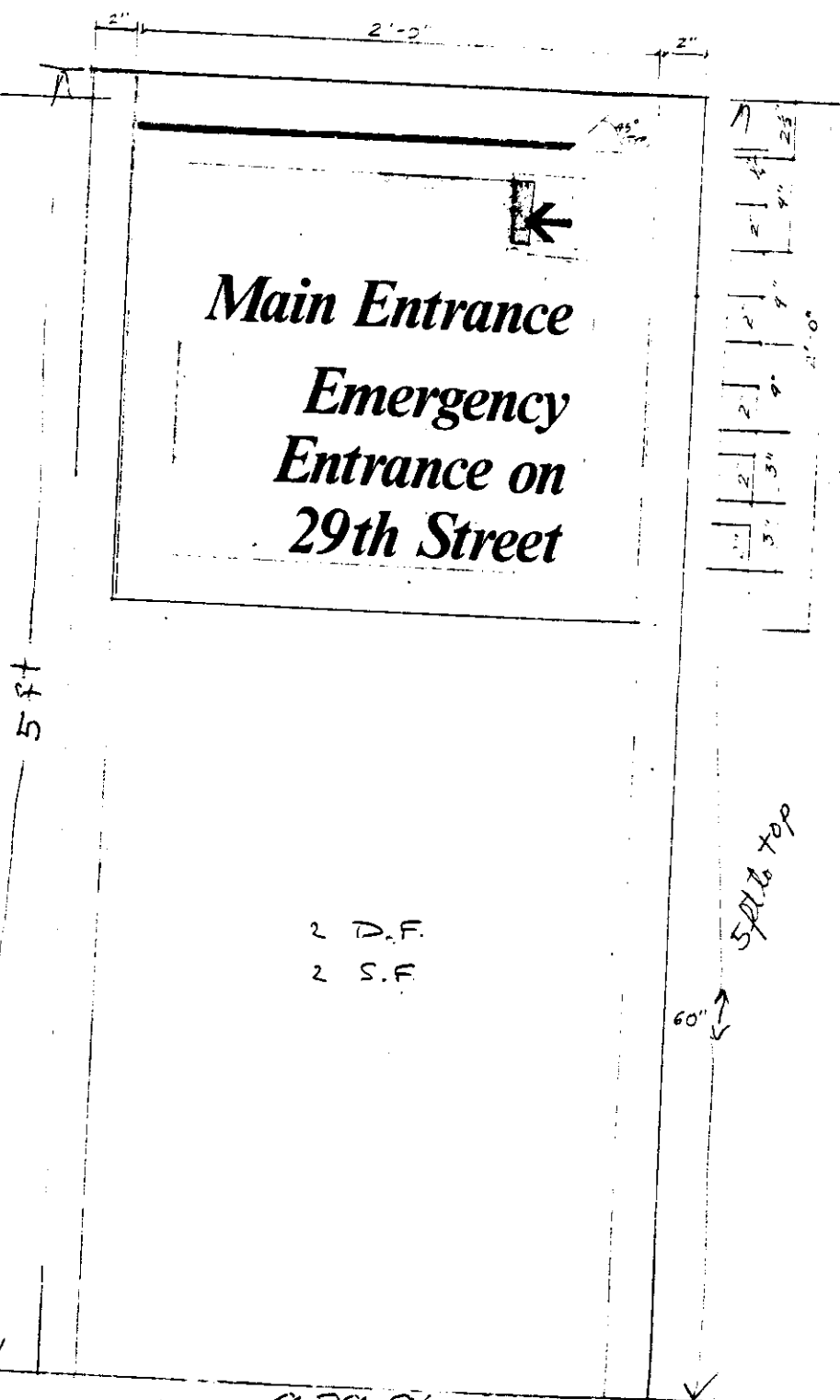
GENERAL NOTE

- 2" x 2" ALUM. POST
- 2" X 2" X 2" ALUM. BOX PANEL

- ALL BORDER BANDS AT ALL 4 SIDES OF SIGN
- FLUSH LEFT AT EDGE OF SIGN - BAND FLUSH WITH RIGHT EDGE OF MESSAGE
- RIGHT EDGE OF BAND TO TAPER AT
- THIS IS TYPICAL FOR ALL EXTERIOR SIGNS



SECTION
SCALE: 3/8" = 1'



ADDIT
MESA
E/OB.
SEE
300

2 D.F.
2 S.F.

① RULE LINE DETAIL
(SEE LAYOUT FOR RULE LINE SIDES)

1234567890

② TIFFANY MEDIUM ITALIC NUMBERS ONLY

NOTE:

TYPESTYLE FOR ALL INTERIOR AND SITE
MESSAGE TO BE "TIMES BOLD ITALIC",
WITH THE EXCEPTIONS OF ALL NUMBERS,
BEING "TIFFANY MEDIUM ITALIC" AND THE
LETTER "GENERAL HOSPITAL" LOGO TYPE
BEING "HELVETICA MED." (SEE PG. 3-4)

ABCDEFGHIJKLMN
OPQRSTUVWXYZ

abcdefghijklmn
opqrstuvwxyz

③ TIMEX BOLD ITALIC / LETTERS ONLY

Riddlejohn

28 Beech Street
New York, NY
10014
415-201-1401

Graphic Design
Interior Design
Exterior Design
Signage
Printing

PROJECT: SUITE
GENERAL
HOSPITAL

DRAWING: TYPESTYLE / LETTERS
RULE LINE DETAIL

DATE: 8-28-86

REVISED:

DRAWN BY: WJ

G3

item 19