



REPORT TO COUNCIL

City of Sacramento

915 I Street, Sacramento, CA 95814-2604
www.CityofSacramento.org

Consent
February 16, 2010

Honorable Mayor and
Members of the City Council

**Title: Project Agreement: Regional Transit (RT) Minimal Operable Segment 1
(MOS-1) – Downtown-Natomas-Airport Light Rail Corridor Project
(P15013910)**

Location/Council District: 1.5 mile extension of Light Rail Transit (LRT) beginning at 8TH and H Streets, travelling north to G Street, west to 7th Street and north to the Richards Boulevard Station, returning south on 7th Street to 7th and H Streets, with a light rail station at Richards Boulevard and on 8th Street between H and I Streets.
Council District 1 - (See Location Map)

Recommendation: Adopt a **Resolution** approving the Project Agreement with Regional Transit for Minimal Operable Segment 1 of the Downtown-Natomas-Airport Rail Corridor Light Rail Project.

Contact: Jon Blank, Supervising Engineer, 808-7914

Presenters: None

Department: Transportation

Division: Engineering Services

Organization No: 15001131

Description/Analysis

Issue: A Project Agreement between the City and RT is necessary for RT to construct the Minimal Operable Segment (MOS-1) of the Downtown-Natomas-Airport Rail Corridor Light Rail Project through the City.

Policy Considerations: This action requested herein is consistent with the Sacramento City Code, Title 3 and with the City of Sacramento's Strategic Plan goals of achieving sustainability and neighborhood livability.

Environmental Considerations:

California Environmental Quality Act (CEQA): Regional Transit is the lead agency for the project and has completed the necessary CEQA documentation and approvals.

Sustainability Considerations: RT's Project conforms to the Air Quality Focus Area, the Public Health and Nutrition Area, and the Urban Design and Land Use by improving the environment and promoting alternative modes use.

Other: None.

Commission/Committee Action: None.

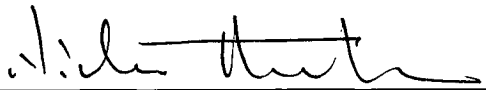
Rationale for Recommendation: Approval of the Project Agreement with RT will enable RT to proceed with construction of the project within the City.

Financial Considerations: Regional Transit will reimburse the City for all costs incurred related to the design review of RT's Plans and Specifications and construction inspection. The City will calculate fee deposits prior to design review and encroachment permit issuance based on estimates and schedules from RT that have been reviewed and approved by the City. City will provide an invoice to RT if City's actual costs exceed the amount of the deposit, and will return any unspent funds deposited with the City upon expiration of the Project warranty period.

The City will reimburse RT for the cost to install any betterments, or any portions of betterments, if the City directs RT to construct improvements that are not required by the project.

There are no general funds planned or allocated to this project.

Emerging Small Business Development (ESBD): Not applicable as no goods or services are being purchased.

Respectfully Submitted by: 
Nicholas Theocharides
Engineering Services Manager

Approved by: 
Jerry Way
Director of Transportation

Recommendation Approved:

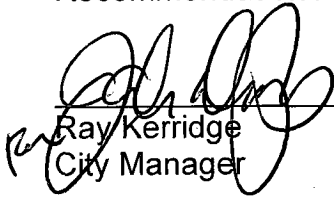

Ray Kerridge
City Manager

Table of Contents:

Report	pg. 1
Attachments	
1 Background	pg. 5
2 Resolution	pg. 6
Exhibit A- Location Map	pg. 7

Attachment 1**Background:**

The Project Agreement with Regional Transit for MOS-1 (Green Line) of the Downtown-Natomas-Airport Rail Corridor Light Rail Project covers the construction of the Light Rail tracks beginning at 8th and H Streets, traveling north on 8th Street to G Street, heading west on G Street until reaching 7th Street. Along 7th Street from G Street, to North B Street, MOS-1 will be a bi-directional single-track on the east side of 7th Street. At North B Street, it will transition to a double-track running in the traffic lanes to Richards Boulevard. At Richards Boulevard, the tracks curve west into an exclusive double-track on the north side of Richards Boulevard. The MOS-1 project includes a station on Richards Boulevard at the Township 9 Development, just west of North 7th Street, and a new station for northbound trains on the west side of 8th Street between I and H streets. At 7th and G Streets, southbound trains will continue on 7th Street to a connection to the existing track at H Street. MOS-1 will operate as an independent circulator, connecting to existing tracks south of H Street and running through downtown to the 13th Street Station, where it will turn around and travel north back to Richards Boulevard. To accommodate future low-floor LRT vehicles, the project includes modifications to the existing light rail stations at 7th and I Street, 8th and K Street, 7th Street and Capitol, 8th Street and Capitol, 8th and O Streets, Archives Plaza and 13th Street.

RT is authorized to contract with a single entity to design and construct the project (Design-Build). The City will review and approve plans and issue an encroachment permit for this segment of the DNA Light Rail Corridor project (Green Line) as they are prepared by RT's Design-Builder, rather than reviewing and approving a single set of plans and specifications. RT will pay all costs resulting from construction of the project, including the costs of replacing existing facilities and improvements required by the project, and will reimburse the City for all costs related to design review and construction inspection.

The remaining segment of the Downtown-Natomas-Airport Light Rail project is being studied by RT to determine how the rest of the project will be phased. The MOS-1 (Green Line) broke ground on October 12, 2009, and is anticipated to be completed approximately 13 months after RT issues a Notice to Proceed to the Design Builder.

It is anticipated that some night and weekend work will occur. Every effort will be made to minimize public inconvenience. The Contractor will be required to adhere to all City Ordinances including the Noise Ordinance and special conditions imposed by the City.

Attachment 2

RESOLUTION NO.

Adopted by the Sacramento City Council

**APPROVAL OF PROJECT AGREEMENT WITH REGIONAL TRANSIT (RT) FOR
MINIMAL OPERABLE SEGMENT 1 (MOS-1) - DOWNTOWN-NATOMAS-
AIRPORT LIGHT RAIL CORRIDOR PROJECT (P15013910)**

BACKGROUND

- A. The Project Agreement with Regional Transit for MOS-1 (Green Line) of the Downtown-Natomas-Airport (DNA) Rail Corridor Light Rail Project covers the construction of the Light Rail tracks beginning at 8th and H Streets, traveling north on 8th Street to G Street, heading west on G Street until reaching 7th Street and along 7th Street to the north side of Richards Boulevard.
- B. RT is authorized to contract with a single entity to design and construct the project (Design Build). The City will review and approve plans and issue an encroachment permit for this segment of the DNA Light Rail Corridor project (Green Line) as they are prepared by RT's Design-Builder, rather than reviewing and approving a single set of plans and specifications. RT will pay all costs resulting from construction of the project, including the costs of replacing existing facilities and improvements required by the project, and will reimburse the City for all costs related to design review and construction inspection.
- C. The remaining segment of the Downtown-Natomas-Airport Light Rail project is being studied by RT to determine how the rest of the project will be phased. The MOS-1 (Green Line) broke ground on October 12, 2009, and is anticipated to be completed approximately 13 months after RT issues a Notice to Proceed to the Design Builder.

**BASED ON THE FACTS SET FORTH IN THE BACKGROUND, THE CITY COUNCIL
RESOLVES AS FOLLOWS:**

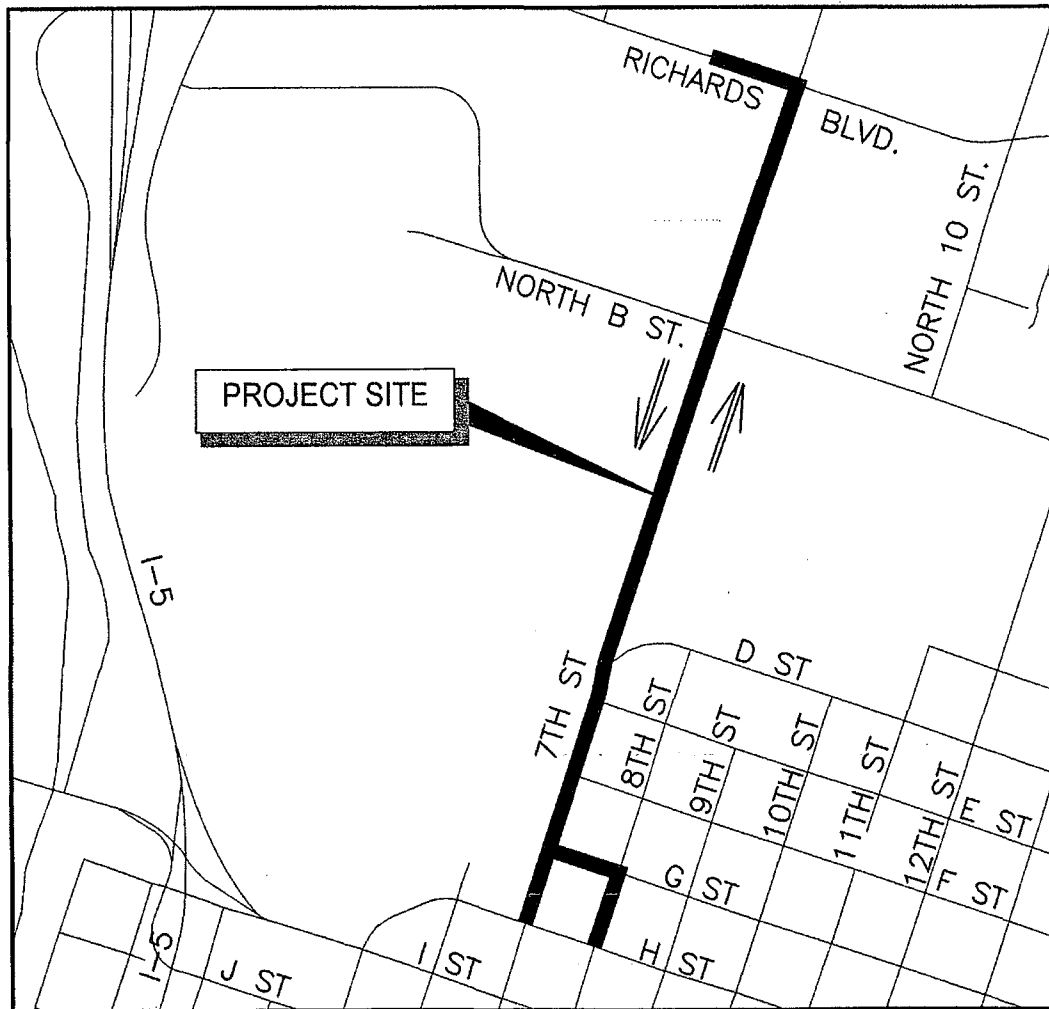
- Section 1. The City Manager is authorized to execute the Project Agreement with RT for Minimal Operable Segment 1 (MOS-1) – Downtown-Natomas-Airport Light Rail Corridor Project (P15013910).
- Section 2. Exhibit A is incorporated into and made part of this resolution.

Table of Contents:

- Exhibit A: Location Map of RT Minimal Operable Segment (MOS-1) (P15013910)

EXHIBIT A

Location map for:
Regional Transit
Minimal Operational Segment 1 (MOS-1)
(PN: P15013910)



Map Contact: Boris Kiksmán
Date: November 2009

