



12

**DEPARTMENT OF
PUBLIC WORKS**

ENGINEERING DIVISION

THOMAS M. FINLEY
ENGINEERING DIVISION MANAGER

**CITY OF SACRAMENTO
CALIFORNIA**

927 TENTH STREET
ROOM 200
SACRAMENTO, CA
95814-2705

916-449-8220

CONSTRUCTION SECTION
640 BERKUT DRIVE
SUITE B
SACRAMENTO, CA
95814-0131

916-449-5282

May 31, 1988

City Council
Sacramento, California

Honorable Members In Session:

**SUBJECT: Laguna Park Unit No. 1, Phase 1 (P-86367) - Approval of
Final Subdivision Map and Agreement**

SUMMARY

Adoption of a resolution approving a Final Subdivision Map and Agreement for Laguna Park Unit No. 1, Phase 1, located at the west side of Carlin Avenue, 1,000 feet south of Langtree, is recommended.

BACKGROUND

On November 25, 1986, the City Council approved a Tentative Subdivision Map by adopting Resolution No. 86-897.

All conditions in the staff subdivision report have been met and the Final Subdivision Map is presented for approval.

FINANCIAL

All subdivision costs are being paid by the subdivider, Laguna Park Associates.

APPROVED
BY THE CITY COUNCIL

MAY 31 1988

AC 87282

OFFICE OF THE
CITY CLERK

City Council
Laguna Park Unit No. 1, Phase 1 (P-86367)
May 31, 1988
Page 2

RECOMMENDATION

It is recommended that the attached resolution approving the Final Subdivision Map and Agreement be adopted.

Respectfully submitted,



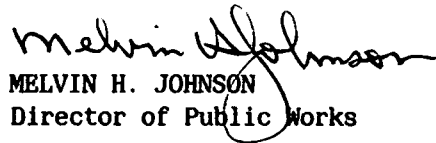
THOMAS M. FINLEY
Engineering Division Manager

Recommendation Approved:



WALTER J. SLIPE
City Manager

Approved:


MELVIN H. JOHNSON
Director of Public Works

JL:vr
D3-15.F
05.1688.1

District No. 7
May 31, 1988

Attachment

RESOLUTION NO. 88-439

ADOPTED BY THE SACRAMENTO CITY COUNCIL ON DATE OF

APPROVING FINAL SUBDIVISION MAP AND AGREEMENT
FOR LAGUNA PARK UNIT NO. 1, PHASE 1 (P-86367)

WHEREAS, THE COUNCIL OF THE CITY OF SACRAMENTO FINDS AND DETERMINES AS
FOLLOWS:

- A. The Final Subdivision Map for Laguna Park Unit No. 1, Phase 1, located at the west side of Carlin Avenue, 1,000 feet south of Langtree, with provisions for its design and improvement, is consistent with the 1986 South Sacramento Community Plan.
- B. The Final Subdivision Map is in substantial compliance with the previously approved tentative map.

NOW, THEREFORE, BE IT RESOLVED BY THE COUNCIL OF THE CITY OF SACRAMENTO AS
FOLLOWS:

- 1. The Final Subdivision Map for Laguna Park Unit No. 1, Phase 1, located at the west side of Carlin Avenue, 1,000 feet south of Langtree, be, and the same is hereby approved subject to the execution by all parties of the Subdivision Improvement Agreement for that subdivision.
- 2. All offers of dedication shown on said map are hereby accepted subject to the improvement thereof required by the Subdivision Agreement.
- 3. The City Manager and City Clerk be authorized and directed to execute on behalf of the City of Sacramento that certain Subdivision Improvement Agreement between the City and Laguna Park Associates to provide for the subdivision improvements required by the Subdivision Map Act and Chapter 40 (Subdivision Regulations) of the Sacramento City Code.

APPROVED
BY THE CITY COUNCIL

MAY 31 1988

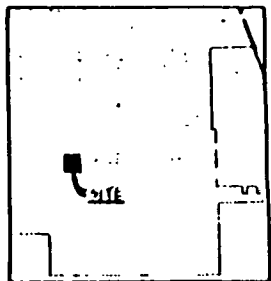
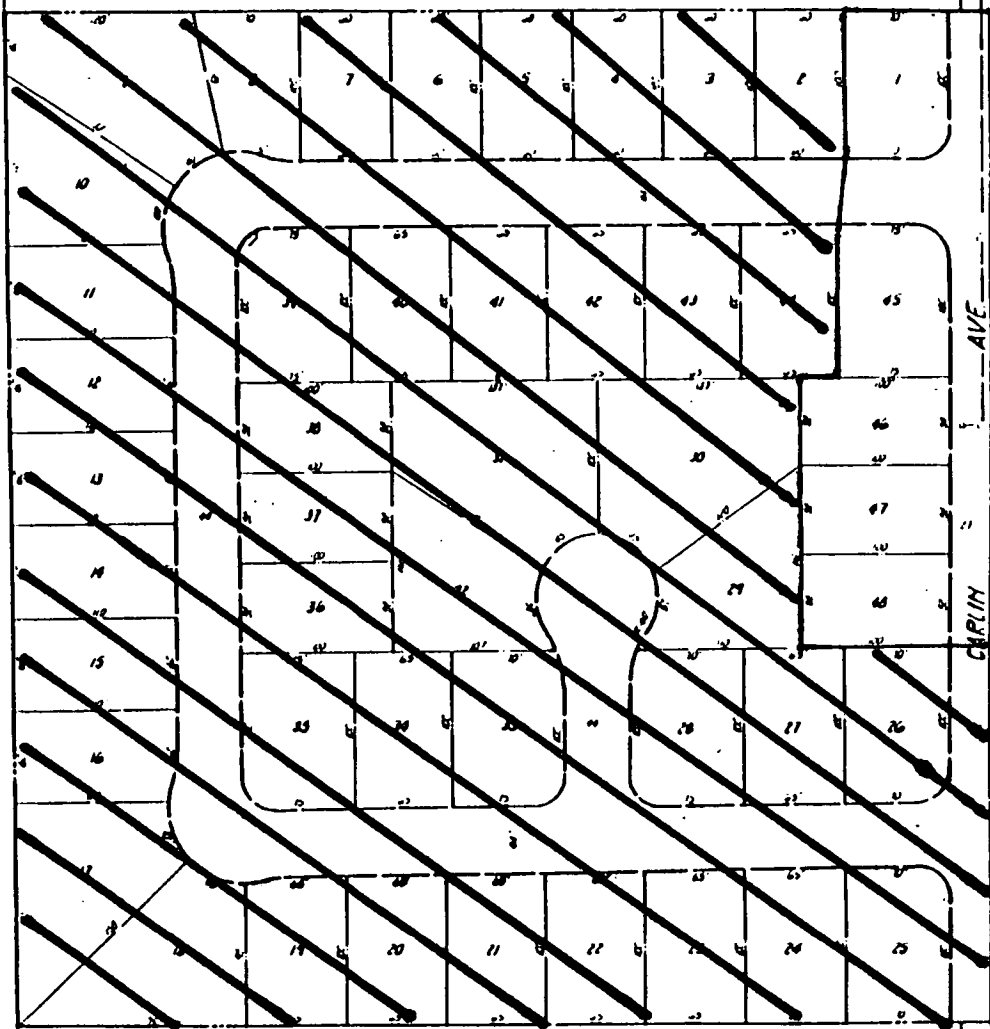
OFFICE OF THE
CITY CLERK

4. The Real Estate Supervisor is authorized and directed to record the above-mentioned agreement in the official records of Sacramento County.

MAYOR

ATTEST:

CITY CLERK



VICINITY MAP
SCALE

PREPARED BY
 CHECKED BY
 DRAWN BY
 APPROVED BY
 DATE
 TITLE
 SHEET NO.
 TOTAL SHEETS
 PROJECT NO.
 CLIENT
 ADDRESS
 CITY
 STATE
 ZIP

12
 98e367

RESOLUTION NO. 86-897

NOV 25 1986

PREPARED BY CHECKED BY DRAWN BY APPROVED BY DATE	SCALE 1"=40'	AREA OF LOT TOTAL AREA PERCENTAGE	MORTON & PITALO, INC. CIVIL ENGINEERING PLANNING SURVEYING	SHEET NO. DATE	TENTATIVE SUBDIVISION MAP LAGUNA PARK UNIT NO. J	SHEET NO. TOTAL SHEETS
--	-----------------	---	---	-------------------	--	---------------------------

June 3, 1988

Laguna Park Associates
2041 Hallmark Drive
Sacramento, CA 95825

Dear Gentlemen:

On May 31, 1988, the Sacramento City Council adopted Resolution No. 88-439 authorizing the execution of City Agreement #87282, Subdivision Improvement Agreement for Laguna Park Unit I, Phase I.

Enclosed, for your records, is one fully certified copy of said agreement and authorizing resolution.

Sincerely,


LORRAINE MAGANA
CITY CLERK

LM/cc/12

Enclosure

cc: Public Works
Risk Management