



CITY OF SACRAMENTO
CALIFORNIA

OFFICE OF THE
CITY MANAGER

October 28, 1981

CITY HALL
915 STREET 95814
(916) 449-5704

City Council
Sacramento, California

Honorable Members in Session:

SUBJECT: Sphere of Influence

On October 21, 1981, the Local Agency Formation Commission adopted a Sphere of Influence for the City of Sacramento. It is fully described in the attached report of the Executive Officer.

No action is required by the Council.

The report is transmitted as an item of information.

Respectfully submitted,

Mac Mailes
Mac Mailes
Assistant City Manager
for Community Development

For City Council Information:

Walter J. Silje
Walter J. Silje, City Manager

November 4, 1981

APPROVED
BY THE CITY COUNCIL

NOV 4 1981

OFFICE OF THE
CITY CLERK



SACRAMENTO LOCAL AGENCY FORMATION COMMISSION

October 27, 1981

Commission

Public Members

Frank B. Stimson, Commission Chairman
Barbara W. Pennington, Alternate

City Members

Ronald Jacobsen, Commission Vice Chairman
Blaine Fisher
George E. Bud, Hannaford, Alternate

County Members

C. Tobias Johnson
Bill Bryan
Illa Colin, Alternate

Special District Members

N. B. Dave, Keller
Albert Dehr
Edd Smith, Alternate
Jesse Marks, Alternate

Staff

John S. Farrell
Executive Officer
Janet D. Robinson
Assistant Executive Officer
Marilyn Ann Flemmer
Commission Clerk

TO: All Interested Parties
FROM: John S. Farrell, Executive Officer
Sacramento Local Agency Formation Commission
RE: City of Sacramento Sphere of Influence
Adopted by the Sacramento Local Agency
Formation Commission on October 21, 1981

On October 21, 1981, after testimony from the City, the County and various special districts and community groups, the Sacramento Local Agency Formation Commission adopted a Sphere of Influence for the City of Sacramento.

A Sphere of Influence is a plan for the ultimate physical boundaries and service area of a local governmental agency. An adopted Sphere is a policy guideline for use by a Local Agency Formation Commission, and the affected agency, to aid the Commission, and the local agency, regarding their decisions on municipal service provision and growth management. A Sphere of Influence is not an annexation proposal but, rather, a long term plan for the control and coordination of land use, agency growth, and the provision of municipal services.

The adopted City of Sacramento Sphere of Influence represents a compromise between the Sacramento Local Agency Formation Commission staff recommendation and the recommendations of the City, the County and numerous affected community groups and special districts.

Sphere Boundary

The Commission's adopted Sphere of Influence for the City of Sacramento is as follows:

From a point of beginning on the Sacramento River, it runs east along I-880, north on I-5, east on Del Paso Road to Sorrento Road where the Sphere line intersects with the City Limits. The Commission, by

excluding portions of the City from its own Sphere of Influence, implied that urban development is not appropriate in this area at this time and proposals for detachment of territory from the City of Sacramento in North Natomas would be appropriate.

The Sphere line travels clockwise around the City, following the City limits until it reaches the intersection of Watt Avenue and the American River. The Arden and Arcade communities were excluded from the City's Sphere of Influence because of strong community feeling and the adequacy of public services in that area.

From Watt Avenue, the Sphere of Influence boundary heads east on the American River to its intersection with the Mayhew Ditch, south along Mayhew Road to a point on Jackson Road. This line conforms with the western boundary of the Rancho Cordova Sphere of Influence, with the exception of the exclusion of the Cordova Golf Course from the City of Sacramento Sphere of Influence. (LAFCO staff will request that the Commission amend the Rancho Cordova Sphere to reflect that change and include the Golf Course in the Rancho Cordova Sphere of Influence.)

The Commission, agreeing with the testimony of the Vineyard community groups and individual citizens, excluded the Vineyard Area from the City's Sphere of Influence, explaining that the inclusion in the Sphere is premature at this time. The Sphere line follows the Elk Grove-Florin Road south to Calvin Road and then west on Calvin to the existing City limits, following the City limits westerly to an extension of Calvin Road and its intersection with the Sacramento River. The South Area/Fruitridge Pocket, a long peninsula of unincorporated territory that penetrates the City to 14th Avenue, was included in the City's Sphere of Influence.

The Sphere boundary was drawn around the southern tip of the City, excluding the Laguna Area. This area, slated for urban development by the County Board of Supervisors, was recommended for inclusion in the Sphere by LAFCO staff. Community and City opposition led the Local Agency Formation Commission to exclude the area from the Sphere. The Sphere of Influence also includes the community of Freeport.

The Sacramento Local Agency Formation Commission staff, on behalf of the Commission, takes this opportunity to thank City Council and staff, affected special district staff and board members, interested community groups, and concerned citizens for the written

and oral testimony each provided throughout the Sphere of Influence study and hearing phases of the Sphere adoption process. The Sacramento LAFCO staff, without the valuable assistance and input of each group, would have been hard pressed to come to a reasonable determination of the City of Sacramento Sphere of Influence.

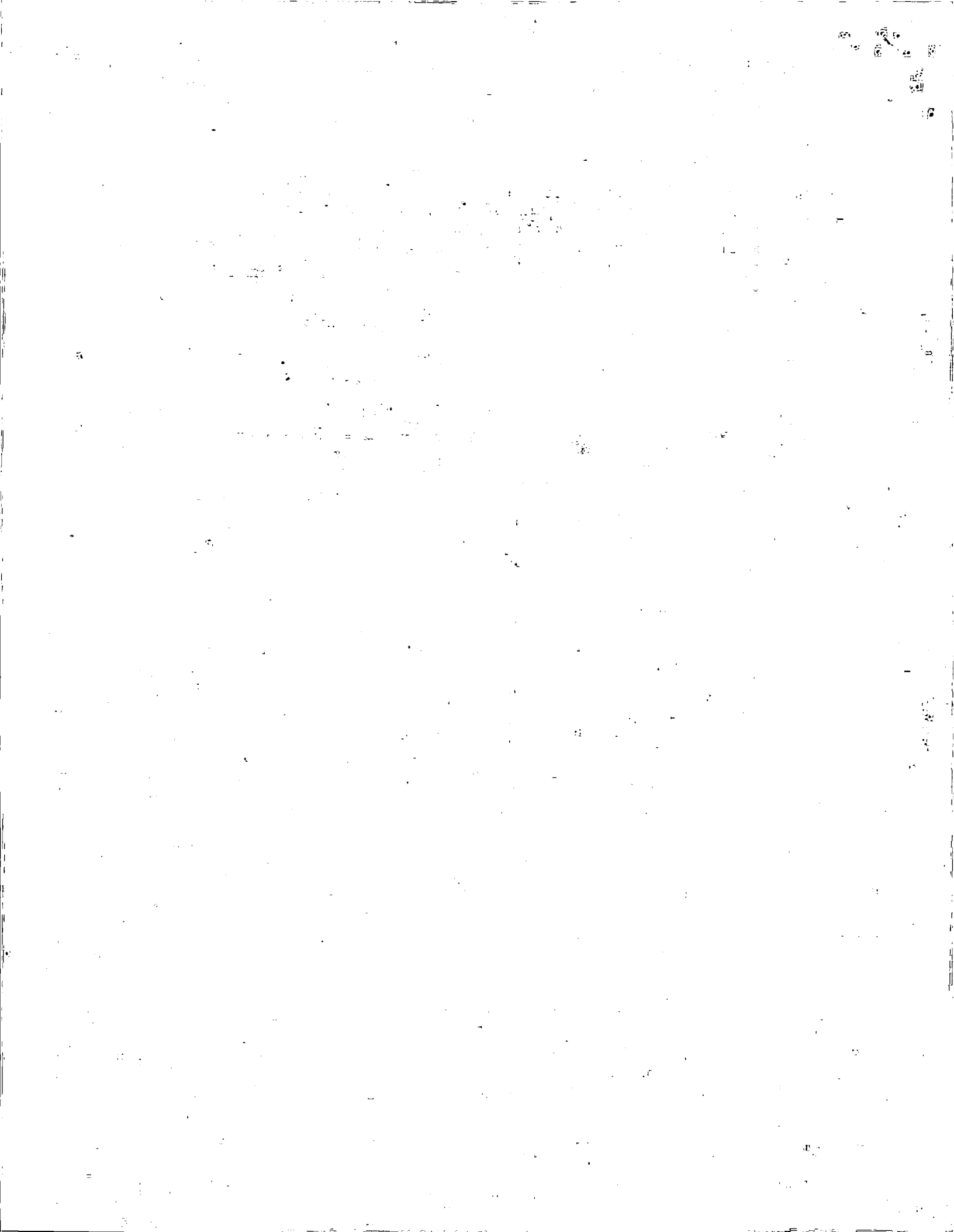
Very truly yours,

SACRAMENTO LOCAL AGENCY
FORMATION COMMISSION

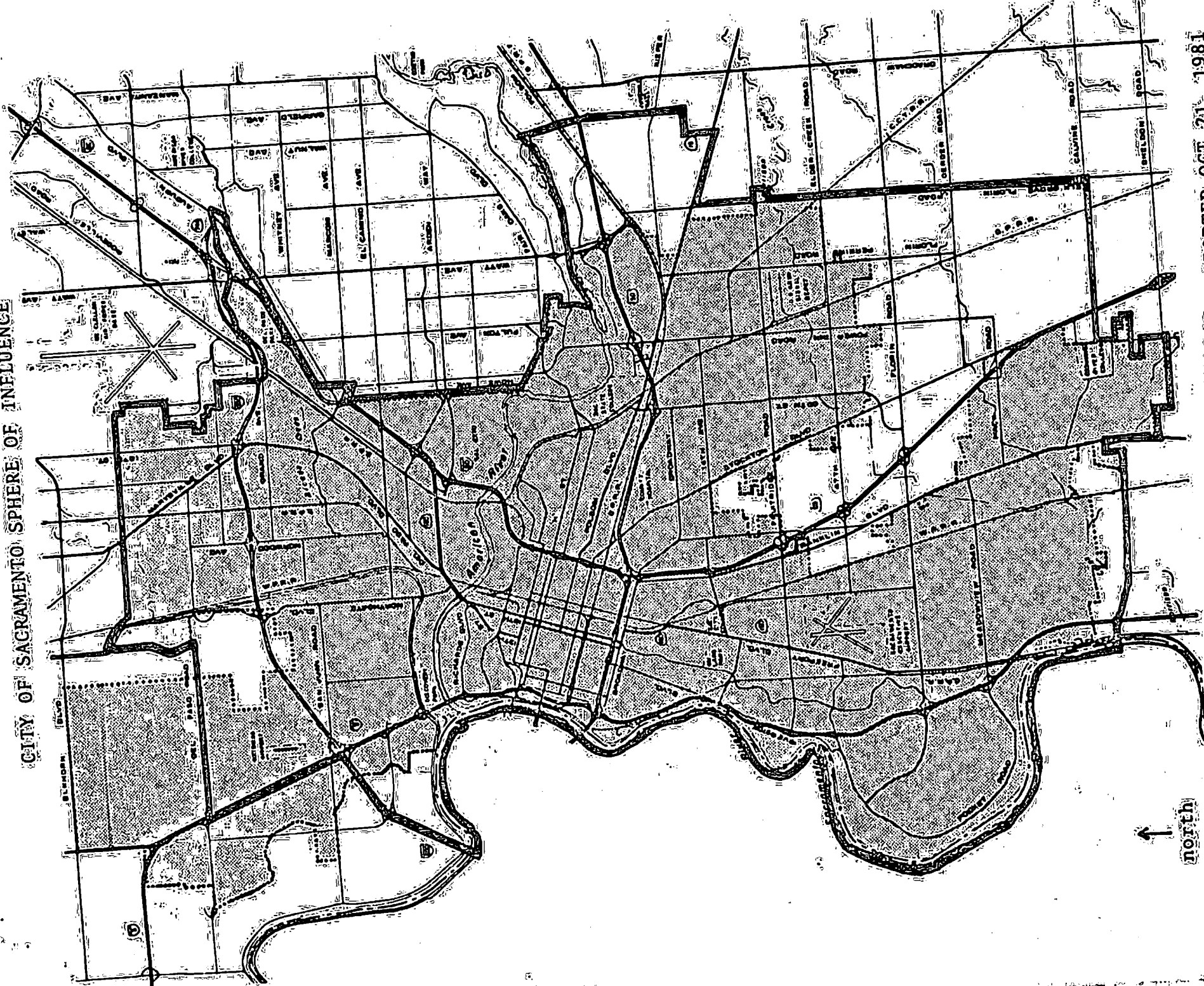


John S. Farrell
Executive Officer

JSF:Ma6
Attachment



CITY OF SACRAMENTO SPHERE OF INFLUENCE



North

SACRAMENTO LOCAL AGENCY FORMATION COMMISSION - ADOPTED OCT. 21, 1981

