



APPROVED  
BY THE CITY COUNCIL

JUN 15 1999

OFFICE OF THE  
CITY CLERK

C.099-077

1.4

DEPARTMENT OF  
UTILITIES  
ENGINEERING SERVICES

CITY OF SACRAMENTO  
CALIFORNIA

1395 - 35TH AVENUE  
SACRAMENTO, CA  
95822-2911

PH 916-264-1400  
FAX 916-264-1497

June 15, 1999

City Council  
Sacramento, California

Honorable Members in Session:

**SUBJECT: CALIFORNIA STATE UNIVERSITY, SACRAMENTO (CSUS) OUTFALL PIPELINE FOR SUMP 31 RECONSTRUCTION PROJECT (PN: WI11) - SUSPEND COMPETITIVE BIDDING AND AWARD CONSTRUCTION CONTRACT TO BIONDI PAVING FOR AN AMOUNT NOT TO EXCEED \$136,500.**

**LOCATION AND COUNCIL DISTRICT:**

The project is located on the west side of the CSUS Campus, south of the baseball field in District 3 (see enclosed map).

**RECOMMENDATION:**

Staff recommends that the City Council authorize the Department of Utilities to suspend competitive bidding and approve the attached resolution authorizing the City Manager and City Clerk to sign and execute the construction contract with Biondi Paving for an amount not to exceed \$136,500.

**CONTACT PERSON:** Gary Reents, Engineering Services Manager, 264-1433  
Andy A. Hunt, Senior Engineer, 264-1408

**FOR COUNCIL MEETING OF:** June 15, 1999

**SUMMARY**

Staff has negotiated a construction contract with Biondi Paving to construct the portion of the CSUS Outfall Project under the CSUS Warm-up Track as part of the track construction project. Suspension of competitive bidding and authorization for the City Manager and City Clerk to execute the contract is requested.

City Council

June 15, 1999

CSUS Outfall Pipeline Project for Sump 31- Suspension of competitive bidding  
(PN:WI11)

### **COMMITTEE/COMMISSION ACTION**

None.

### **BACKGROUND INFORMATION**

In 1996 Black & Veatch initiated the 'Drainage Master Plan for Sumps 31, 38, 113 and 155 which was subsequently completed by Montgomery Watson. In keeping with the recommendations of that Master Plan, the City has initiated a project to increase the capacity of the Sump 31 Pump Station and run the outfall pipeline across the CSUS campus to the American River (Sump 31 currently discharges into the CSUS drainage ditch that parallels the UPRR tracks ). The preferred pipeline alignment crosses the proposed CSUS Warm-up Track. Biondi Paving has been awarded the track construction project by CSUS. They are scheduled to begin construction in June 1999.

In order to avoid future disruption to the new track, the Department of Utilities, at the request of CSUS, is proposing to install the portion of the outfall pipeline under the track as part of the track construction project. The remainder of the outfall pipeline will be constructed as part of the future Sump 31 Reconstruction Project .

The proposed cost given by Biondi Paving is reasonable and within staff's cost estimate.

### **FINANCIAL CONSIDERATIONS**

There are sufficient funds in the Storm Drainage Fund Capital Improvement Program (PN: WI11), Basin 31 Improvements - Outfall to CSUS, approved by City Council July 1998, to fund the construction contract.

### **ENVIRONMENTAL CONSIDERATIONS**

The Planning Services Division, Environmental Section, has reviewed the project and has determined that this project is statutorily exempt from CEQA under Section 15282(L) of the CEQA Guidelines.

### **POLICY CONSIDERATIONS**

The action requested herein is consistent with Sacramento City Code 58.401 regarding the suspension of competitive bidding.

City Council  
June 15, 1999  
CSUS Outfall Pipeline Project for Sump 31- Suspension of competitive bidding  
(PN:WI11)

**ESBD CONSIDERATIONS**

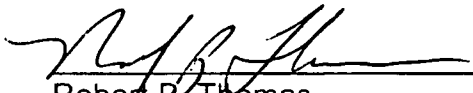
This project included participation goals of 20% for emerging and small business enterprises as required by Ordinance 99-007 and Resolution 99-055, related to ESBE participation goals and policies, adopted by the City Council on February 9, 1999. Biondi Paving, Inc. exceeded the ESBE goals with a participation level of 100%.

Respectfully submitted,



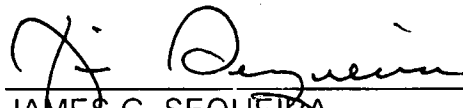
Gary A. Reents  
Engineering Services Manager

RECOMMENDATION APPROVED:

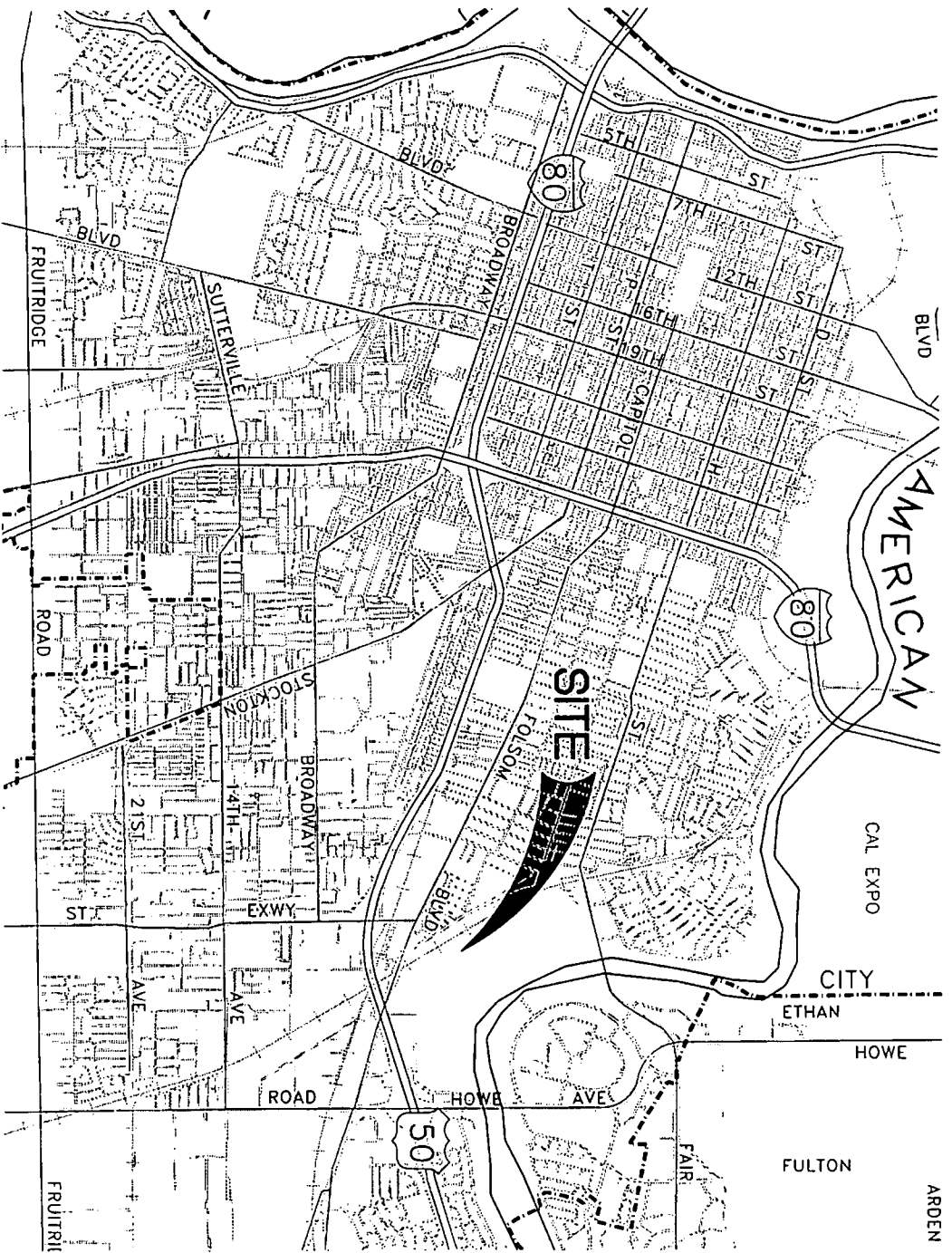


Robert P. Thomas  
City Manager

APPROVED:



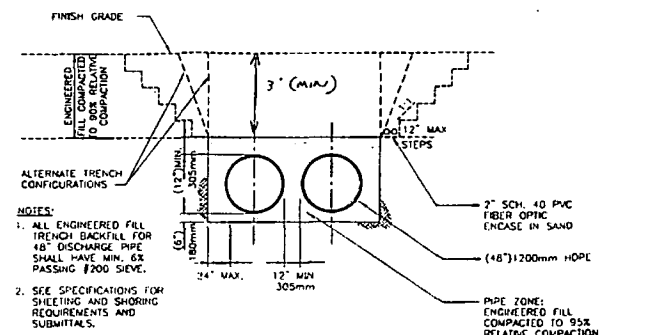
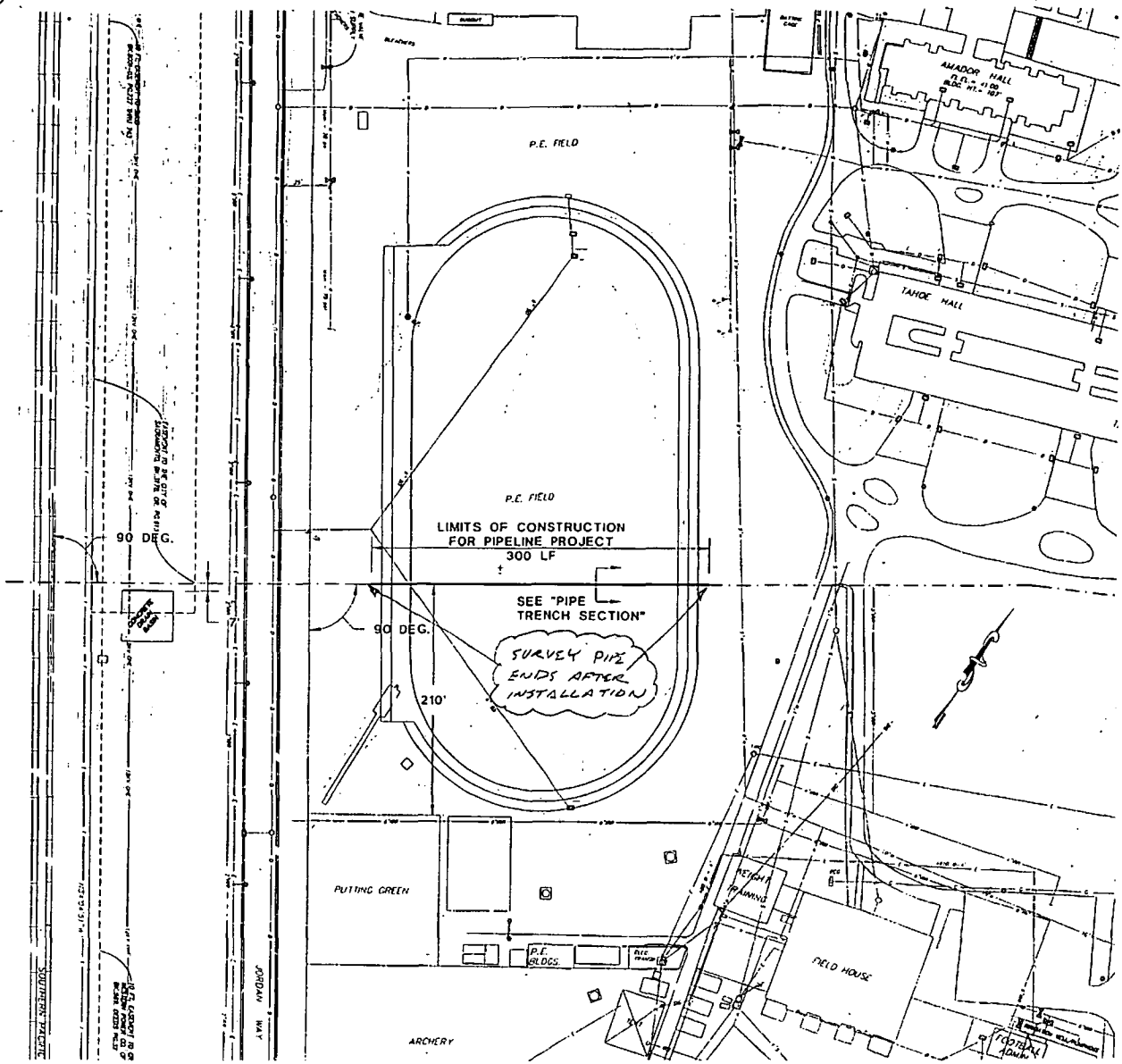
JAMES G. SEQUEIRA  
Director of Utilities



**VICINITY MAP**  
 NO SCALE

**CSUS OUTFALL  
 PIPELINE FOR SUMP 31  
 RECONSTRUCTION PROJECT**

PN:WH1



- NOTES:
1. ALL ENGINEERED FILL TRENCH BACKFILL FOR 48" DISCHARGE PIPE SHALL HAVE MIN. 6% PASSING #200 SIEVE.
  2. SEE SPECIFICATIONS FOR SHEETING AND SHORING REQUIREMENTS AND SUBMITTALS.

**PIPE TRENCH SECTION**  
NO SCALE

(74" CRUSHED ROCK OR NATIVE MATERIAL PER SPEC.)

**LEGEND**

—————	TRENCH CENTERLINE
- - - - -	FUTURE TRENCH CENTERLINE

NOTE:  
CALL THE CITY OF SACRAMENTO (DAN SHERRY @ 264-1419) PRIOR TO CONSTRUCTION STAKING PIPE ALIGNMENT.

**PIPE LOCATION CROSSING RUNNING TRACK**  
SCALE: 1" = 100'

**APPROVED**  
BY THE CITY COUNCIL

**JUN 15 1999**

OFFICE OF THE  
CITY CLERK

**RESOLUTION NO. 99-299**

ADOPTED BY THE SACRAMENTO CITY COUNCIL

ON DATE OF \_\_\_\_\_

**RESOLUTION AUTHORIZING THE DEPARTMENT OF UTILITIES TO SUSPEND COMPETITIVE BIDDING AND AUTHORIZE THE CITY MANAGER AND CITY CLERK TO SIGN AND EXECUTE THE CONTRACT WITH BIONDI PAVING FOR THE CSUS OUTFALL PIPELINE FOR SUMP 31 RECONSTRUCTION PROJECT (PN: WI11) FOR AN AMOUNT NOT TO EXCEED \$136,500.**

**BE IT RESOLVED BY THE SACRAMENTO CITY COUNCIL THAT:**

1. In the best interests of the City of Sacramento, competitive bidding is hereby suspended for the construction of the CSUS Outfall Pipeline for Sump 31 Reconstruction Project (PN: WI11).
2. The City Manager and City Clerk are hereby authorized to sign and execute a contract with Biondi Paving for the construction of the CSUS Outfall Pipeline for Sump 31 Reconstruction Project (PN: WI11) for an amount not to exceed \$136,500.

\_\_\_\_\_  
MAYOR

ATTEST:

\_\_\_\_\_  
CITY CLERK

\_\_\_\_\_  
FOR CITY CLERK USE ONLY

RESOLUTION NO. \_\_\_\_\_

DATE ADOPTED: \_\_\_\_\_