

RESOLUTION NO. 2001-017

ADOPTED BY THE SACRAMENTO CITY COUNCIL

ON DATE OF JAN 9 2001

A RESOLUTION OF THE CITY COUNCIL OF THE CITY OF SACRAMENTO APPROVING BOUNDARY MAP OF AREA TO BE ANNEXED TO THE WILLOWCREEK MAINTENANCE ASSESSMENT DISTRICT NO. 98-03 (ANNEXATION NO. 6)

WHEREAS:

A. The City Council of the City of Sacramento ("City") has heretofore established the City of Sacramento Willowcreek Maintenance Assessment District No. 98-03 ("District") pursuant to the provisions of Title 81 of the Sacramento City Code ("Act").

B. The purpose of the District is to provide an assured source of financing the cost of specified maintenance services ("Services") relating to certain improvements which are installed in and about approved subdivisions by landowners, so as to maintain those improvements in a manner designed to deter deterioration and to improve the quality of life of subdivision residents.

C. As part of the conditions for approval of subdivision maps within the City, landowners are required to annex the property within the subdivision to the District, and City will not approve a final subdivision map without such proceedings having been commenced and completed.

D. Myers Homes of California, LLC, a Nevada limited liability company ("Landowner") has presented a petition to the City requesting that the City commence proceedings for annexation of the land described in Exhibit A, attached hereto and incorporated herein by this reference ("Property"), to the District, pursuant to the provisions of Article XIID of the California Constitution and the Act.

E. Landowner has installed, or will install the improvements specified in Exhibit B, attached hereto and incorporated herein by this reference ("Improvements") in and upon the Property.

F. The maintenance services specified in Exhibit B, attached hereto and incorporated herein by this reference ("Services") are those that will be financed through

s:\bill\assess\wilckmad\annexno6\mapapprove resol

FOR CITY CLERK USE ONLY

RESOLUTION NO. 2001-017
DATE ADOPTED: JAN 9 2001

these proceedings to annex the Property to the District, all of which are authorized as "Maintenance" under the Act.

G. The City Council has heretofore adopted Resolution No. 2001-016, whereunder Landowner's petition to annex territory to the District was accepted, annexation proceedings were initiated, the Director of Public Works was appointed as engineer of record ("Engineer"), and the Engineer was directed to prepare the report required by the Act.

H. The Engineer has submitted to the Council a map entitled "Proposed Boundaries of Annexation No. 6, Willowcreek Maintenance Assessment District No. 98-03, City of Sacramento, County of Sacramento, State of California" indicating the proposed boundaries of the area to be annexed, a copy of which map, labeled Exhibit A-1, is attached hereto and incorporated herein and made a part hereof;

NOW, THEREFORE, BE IT RESOLVED by the City Council of the City of Sacramento, as follows:

Section 1. The foregoing recitals are true and correct and the Council so finds and determines.

Section 2. Said map is hereby approved by the Council as the map of the area to be annexed to the District, and the City Clerk of the City of Sacramento is hereby authorized and directed to endorse the certificate on said map evidencing the date and adoption of this resolution.


MAYOR

ATTEST:


CITY CLERK

c:\submaint.map

FOR CITY CLERK USE ONLY

RESOLUTION NO. 2001-017

DATE ADOPTED: JAN 9 2001

**EXHIBIT A
DESCRIPTION**

A PORTION OF LOTS 35 AND 36, AS SHOWN ON THAT CERTAIN MAP OF "NATOMAS RIVERSIDE SUBDIVISION NO. 2" ON FILE IN BOOK 15 OF MAPS, MAP NO. 41, IN THE OFFICE OF THE RECORDER OF THE COUNTY OF SACRAMENTO, DESCRIBED AS FOLLOWS:

BEGINNING AT THE NORTHWEST CORNER OF "RIVERWALK UNIT NO. 1", AS SHOWN IN BOOK 259 OF MAPS, MAP NO. 3, FILED IN THE OFFICE OF THE RECORDER OF THE COUNTY OF SACRAMENTO; THENCE ALONG THE BOUNDARY OF SAID "RIVERWALK UNIT NO. 1" THE FOLLOWING THIRTY-FIVE (35) COURSES: (1) SOUTH 00°16'13" EAST 144.00 FEET, (2) SOUTH 48°38'40" EAST 154.88 FEET, (3) SOUTH 27°23'43" EAST 89.03 FEET, (4) CURVING TO THE LEFT ON AN ARC OF 475.00 FEET RADIUS, FROM A RADIAL BEARING OF NORTH 32°42'37" WEST, SAID ARC BEING SUBTENDED BY A CHORD BEARING OF SOUTH 55°02'13" WEST 37.34 FEET, (5) CURVING TO THE RIGHT ON AN ARC OF REVERSE CURVATURE WITH AN RADIUS OF 22.00 FEET, SAID ARC BEING SUBTENDED BY A CHORD BEARING NORTH 84°38'22" WEST 29.77 FEET, (6) NORTH 42°03'48" WEST 7.00 FEET, (7) SOUTH 47°56'12" WEST 40.00 FEET, (8) SOUTH 42°03'48" EAST 7.00 FEET, (9) CURVING TO THE RIGHT ON AN ARC OF 22.00 FEET RADIUS, SAID ARC BEING SUBTENDED BY A CHORD BEARING SOUTH 00°30'46" WEST 29.77 FEET, (10) CURVING TO THE LEFT ON AN ARC OF REVERSE CURVATURE WITH AN RADIUS OF 475.00, SAID ARC BEING SUBTENDED BY A CHORD BEARING SOUTH 37°47'13" WEST 87.78 FEET, (11) CURVING TO THE RIGHT ON AN ARC OF REVERSE CURVATURE WITH AN RADIUS OF 22.00 FEET, SAID ARC BEING SUBTENDED BY A CHORD BEARING SOUTH 75°03'41" WEST 29.77 FEET, (12) NORTH 62°21'45" WEST 7.00 FEET, (13) SOUTH 27°38'15" WEST 40.00 FEET, (14) SOUTH 62°21'45" EAST 7.00 FEET, (15) CURVING TO THE RIGHT ON AN ARC OF 22.00 FEET RADIUS, SAID ARC BEING SUBTENDED BY A CHORD BEARING SOUTH 19°47'10" EAST 29.77 FEET, (16) CURVING TO THE LEFT ON AN ARC OF REVERSE CURVATURE WITH AN RADIUS OF 475.00, SAID ARC BEING SUBTENDED BY A CHORD BEARING SOUTH 16°24'44" WEST 105.53 FEET, (17) SOUTH 10°02'03" WEST 18.23 FEET, (18) CURVING TO THE RIGHT ON AN ARC OF 22.00 FEET RADIUS, SAID ARC BEING SUBTENDED BY A CHORD BEARING SOUTH 55°02'03" WEST 31.11 FEET, (19) NORTH 79°57'57" WEST 7.00 FEET, (20) SOUTH 10°02'03" WEST 40.00 FEET, (21) SOUTH 79°57'57" EAST 7.00 FEET, (22) CURVING TO THE RIGHT ON AN ARC OF 22.00 FEET RADIUS, SAID ARC BEING SUBTENDED BY A CHORD BEARING SOUTH 34°57'57" EAST 31.11 FEET, (23) SOUTH 10°02'03" WEST 25.81 FEET, (24) CURVING TO THE LEFT ON AN ARC OF 275.00 FEET RADIUS, SAID ARC BEING SUBTENDED BY A CHORD BEARING SOUTH 12°50'50" EAST 213.85 FEET, (25) CURVING TO THE RIGHT ON AN ARC OF REVERSE CURVATURE WITH AN RADIUS OF 22.00 FEET, SAID ARC BEING SUBTENDED BY A CHORD BEARING SOUTH 07°12'13" WEST 29.97 FEET, (26) SOUTH 50°08'10" WEST 0.77 FEET, (27) CURVING TO THE RIGHT ON AN ARC OF 186.00 FEET, SAID ARC BEING SUBTENDED BY A CHORD BEARING SOUTH 51°05'43" WEST 6.23 FEET, (28) SOUTH 37°56'44" EAST 40.00 FEET, (29) CURVING TO THE RIGHT ON AN ARC OF 226.00 FEET RADIUS, SAID ARC BEING SUBTENDED BY A CHORD BEARING NORTH 51°07'54" EAST 7.28 FEET, (30) CURVING TO THE LEFT ON AN ARC OF REVERSE CURVATURE WITH AN RADIUS OF 22.00 FEET, SAID ARC BEING SUBTENDED BY A CHORD BEARING SOUTH 83°14'04" EAST 31.95 FEET, (31) CURVING TO THE RIGHT ON AN ARC OF COMPOUND CURVATURE WITH A RADIUS OF 225.00 FEET, SAID ARC BEING SUBTENDED BY A CHORD BEARING SOUTH 24°33'35" EAST 94.46 FEET, (32) SOUTH 12°26'32" EAST 16.16 FEET, (33) CURVING TO THE RIGHT ON AN ARC OF 21.83 FEET RADIUS, SAID ARC BEING SUBTENDED BY A CHORD BEARING SOUTH 32°06'56" WEST 30.63 FEET, (34) CURVING TO THE LEFT ON AN ARC OF REVERSE CURVATURE WITH A RADIUS OF 3012.93 FEET, SAID ARC BEING SUBTENDED BY A CHORD BEARING SOUTH 76°36'20" WEST 7.16 FEET, AND (35) SOUTH 13°27'45" EAST 68.00 FEET TO A POINT ON THE SOUTHERLY BOUNDARY OF SAID LOT 50; THENCE ALONG SAID SOUTHERLY BOUNDARY CURVING TO THE LEFT ON AN ARC OF 2944.93 FEET RADIUS, FROM A RADIAL BEARING OF NORTH 13°27'45" WEST, SAID ARC BEING SUBTENDED BY A CHORD BEARING SOUTH 67°55'21" WEST 882.27 FEET TO THE EASTERLY BOUNDARY OF NATOMAS WEST VILLAGE NO. 2, AS SHOWN ON THE PLAT OF "NATOMAS WEST VILLAGE NO. 2", ON FILE IN BOOK 268 OF MAPS, MAP NO. 5, IN THE OFFICE OF THE RECORDER OF THE COUNTY OF SACRAMENTO; THENCE ALONG SAID BOUNDARY NORTH 00°24'43" WEST 1564.55 FEET; THENCE NORTH 89°47'47" EAST 738.21 FEET; THENCE NORTH 01°11'13" WEST 1.52 FEET TO THE SOUTH LINE OF THE NORTH 95.00 FEET OF SAID LOT 35; THENCE ALONG SAID SOUTH LINE NORTH 89°43'47" EAST 30.44 FEET TO THE POINT OF BEGINNING. CONTAINING 24.472 ACRES MORE OR LESS.

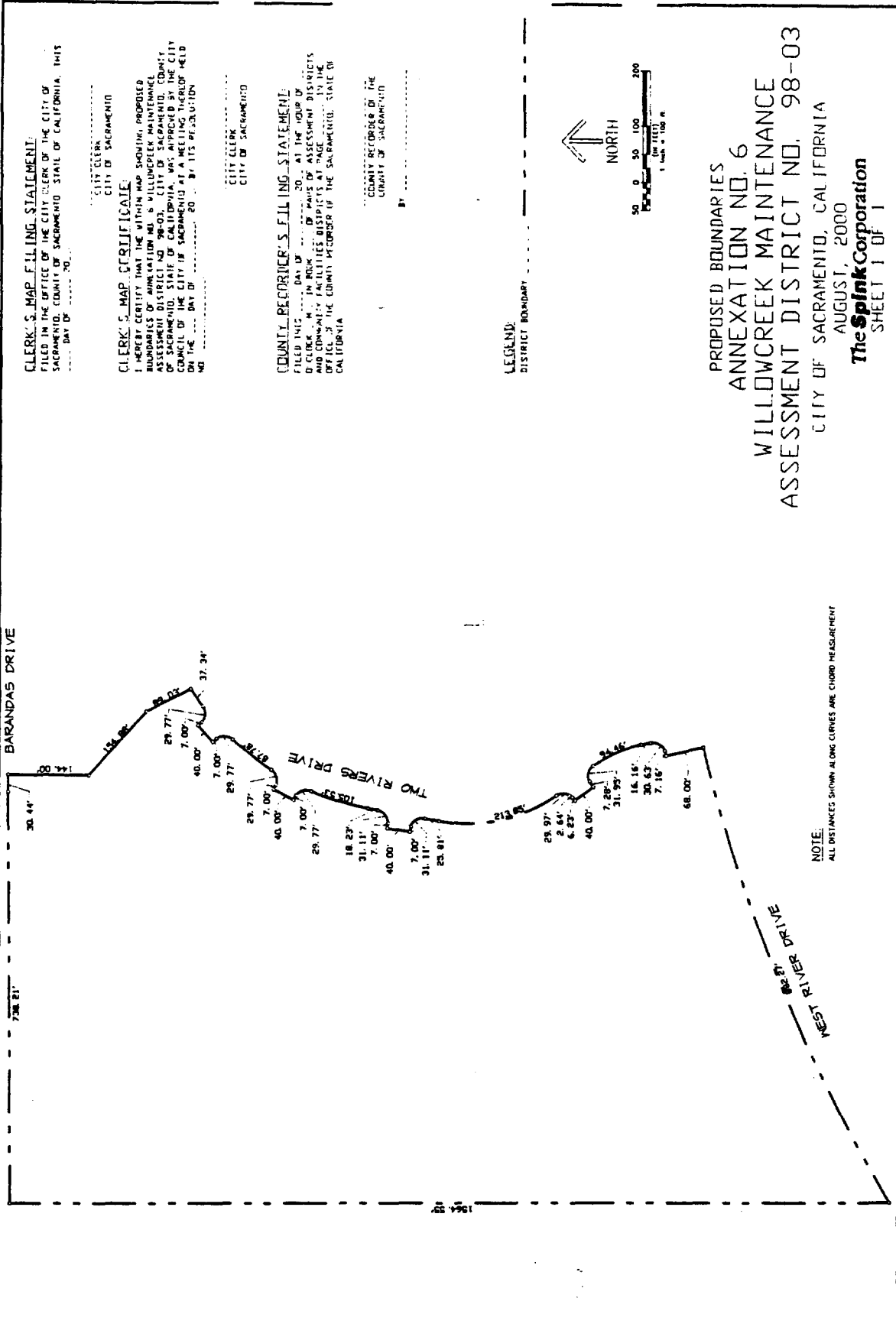
22

FOR CITY CLERK USE ONLY

RESOLUTION NO.: 2001-017

DATE ADOPTED: JAN 9 2001

EXHIBIT A-1



CLERK'S MAP FILING STATEMENT:
 FILED IN THE OFFICE OF THE CITY CLERK OF THE CITY OF SACRAMENTO, COUNTY OF SACRAMENTO, STATE OF CALIFORNIA, THIS DAY OF _____ 20__.

CITY CLERK
 CITY OF SACRAMENTO

CLERK'S MAP CERTIFICATE:

I HEREBY CERTIFY THAT THE WITHIN MAP SHOWING PROPOSED BOUNDARIES OF ANNEXATION NO. 6 WILLOWCREEK MAINTENANCE ASSESSMENT DISTRICT NO. 98-03, CITY OF SACRAMENTO, COUNTY OF SACRAMENTO, STATE OF CALIFORNIA, WAS APPROVED BY THE CITY COUNCIL OF THE CITY OF SACRAMENTO AT A MEETING THEREOF HELD ON THE _____ DAY OF _____ 20__ BY ITS RESOLUTION NO. _____.

CITY CLERK
 CITY OF SACRAMENTO

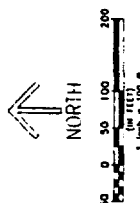
COUNTY RECORDER'S FILING STATEMENT:

FILED THIS _____ DAY OF _____ 20__ AT THE HOUR OF _____ IN THE OFFICE OF THE COUNTY RECORDER OF THE COUNTY OF SACRAMENTO, STATE OF CALIFORNIA.

COUNTY RECORDER OF THE
 COUNTY OF SACRAMENTO

BY _____

LEGEND:
 DISTRICT BOUNDARY



PROPOSED BOUNDARIES
 ANNEXATION NO. 6
 WILLOWCREEK MAINTENANCE
 ASSESSMENT DISTRICT NO. 98-03
 CITY OF SACRAMENTO, CALIFORNIA
 AUGUST, 2000
The Spink Corporation
 SHEET 1 OF 1

NOTE:
 ALL DISTANCES SHOWN ALONG CURVES ARE CHORD MEASUREMENT

27 0851-0000-0003 DMG STATE/ANNEXATION, I, INC. MAP# 1-1-000 111

FOR CITY CLERK USE ONLY

RESOLUTION NO.: 2001-017

DATE ADOPTED: JAN 9 2001

EXHIBIT B

DESCRIPTON OF SERVICES AND OF IMPROVEMENTS TO BE MAINTAINED

ANNEXATION NO. 6 TO THE WILLOWCREEK MAINTENANCE ASSESSMENT DISTRICT NO. 98-03

The improvement maintenance work (hereafter referred to as the "work") for the Annexation No. 6 to the Willowcreek Maintenance Assessment District is briefly described in three parts as follows:

Part #1:

The work described herein is to be carried out at Storm Sump 160 located within the boundaries of the Willowcreek Assessment District No. 94-03 recorded on March 17, 1998, in Book 80 of Maps of Assessment Districts and Community Facilities District at Page 26 in the office of the County Recorder of the County of Sacramento, State of California:

The work to be performed consists of furnishing all tools, equipment, apparatus, facilities, labor, material, supplies, and utilities necessary or desirable to provide inspections and water quality and sediment sampling and analysis.

Part #2

The work described herein is to be carried out at Storm Sump 160, the storm drainage manholes, inlets and pipes in Orchard Lane/River Plaza Drive from its northerly intersection of the Natomas Main Drainage Canal to a point approximately 1,700 feet south of its intersection of West El Camino Avenue, Unity Way, Road "A", Road "B" all located within the Willowcreek Assessment District No. 94-03 and the roadways within the Riverwalk Unit No. 2 Subdivision located within the Annexation No. 6 to the Willowcreek Maintenance Assessment District No. 98-03:

The work to be performed consists of furnishing all tools, equipment, apparatus, facilities, labor, material, supplies, and utilities necessary or desirable to remove sediment and other debris from the storm drainage system. Maintenance work may include, but not be limited to, sediment removal, normal cleaning and inspection of all storm drainage pipes, inlets, manholes and storm Sump 160.

Part #3

The work described herein is to be carried out on Orchard Lane/River Plaza Drive from its northerly intersection of the Natomas Main Drainage Canal to a point approximately 1,700 feet south of its intersection of West El Camino Avenue, Unity Way, Road "A", Road "B" all located within the Willowcreek Assessment District No. 94-03 and the roadways within the Riverwalk Unit No. 2 Subdivision located within the Annexation No. 6 to the Willowcreek Maintenance Assessment District No. 98-03:

The work to be performed consists of furnishing all tools, equipment, facilities, labor, material, supplies and utilities necessary or desirable to mechanically sweep the roadways in order to remove sediment and other debris.

FOR CITY CLERK USE ONLY

RESOLUTION NO. 2001-017
DATE ADOPTED: JAN 9 2001