

RESOLUTION NO. 2001-030

ADOPTED BY THE SACRAMENTO CITY COUNCIL

ON DATE OF JAN 16 2001

A RESOLUTION OF THE CITY COUNCIL OF THE CITY OF SACRAMENTO APPROVING BOUNDARY MAP OF AREA TO BE ANNEXED TO THE NEIGHBORHOOD LANDSCAPING DISTRICT (ANNEXATION NO. 17)

WHEREAS:

A. The City Council of the City of Sacramento ("City") has heretofore established the City of Sacramento Neighborhood Landscaping District ("District") pursuant to the provisions of the Landscaping and Lighting Act of 1972, Streets and Highways Code Sections 12500 et seq. ("Act").

B. The purpose of the District is to provide an assured source of financing the cost of specified maintenance services ("Services") relating to certain improvements which are installed in and about approved subdivisions by landowners, so as to maintain those improvements in a manner designed to deter deterioration and to improve the quality of life of subdivision residents.

C. As part of the conditions for approval of subdivision maps within the City, landowners are required to annex the property within the subdivision to the District, and City will not approve a final subdivision map without such proceedings having been commenced and completed.

D. Sacramento Housing and Redevelopment Agency, a California Joint Powers Agency ("Landowner") has presented a petition to the City requesting that the City commence proceedings for annexation of the land described in Exhibit A, attached hereto and incorporated herein by this reference ("Property"), to the District, pursuant to the provisions of Article XIID of the California Constitution and the Act.

E. Landowner has installed, or will install the improvements specified in Exhibit B, attached hereto and incorporated herein by this reference ("Improvements") in and upon the Property.

F. The maintenance services specified in Exhibit B, attached hereto and

S:\bill\assess\submaint annex17 map resol

FOR CITY CLERK USE ONLY

RESOLUTION NO. 2001-030

DATE ADOPTED: JAN 16 2001

incorporated herein by this reference ("Services") are those that will be financed through these proceedings to annex the Property to the District, all of which are authorized as "Maintenance" under Section 22531 of the Act and "Services" under Section 22538 of the Act.


G. The City Council has heretofore adopted Resolution No. 2001-029, whereunder Landowner's petition to annex territory to the District was accepted, annexation proceedings were initiated, the Director of Public Works was appointed as engineer of record ("Engineer"), and the Engineer was directed to prepare the report required by Article 4 (commencing with Section 22565) of Chapter 1 of the Act.

H. The Engineer has submitted to the Council a map entitled "Boundary Map, Annexation Area No. 17, Neighborhood Landscaping District, City of Sacramento, County of Sacramento, California" indicating the proposed boundaries of the area to be annexed, a copy of which map, labeled Exhibit A-1, is attached hereto and incorporated herein and made a part hereof;

NOW, THEREFORE, BE IT RESOLVED by the City Council of the City of Sacramento, as follows:

Section 1. The foregoing recitals are true and correct and the Council so finds and determines.

Section 2. The Boundary Map is hereby approved by the Council as the map of the area to be annexed to the District, and the City Clerk of the City of Sacramento is hereby authorized and directed to endorse the certificate on said map evidencing the date and adoption of this resolution.


MAYOR

ATTEST:


CITY CLERK

s:\bill\assess\submaint annex16 map resol

S:\bill\assess\submaint annex17 map resol

FOR CITY CLERK USE ONLY

RESOLUTION NO. 2001-030

DATE ADOPTED: JAN 16 2001

Exhibit A

DESCRIPTION

ANNEXATION NO. 17 TO THE
NEIGHBORHOOD LANDSCAPING DISTRICT

All that real property situate in the City of Sacramento, County of Sacramento,
State of California, described as follows:

The subdivision Map entitled "Del Paso Nuevo Unit 1", recorded on December
14, 2000 in Book 281 of Maps, Map no. 1, records of Sacramento County,
California.

FOR CITY CLERK USE ONLY

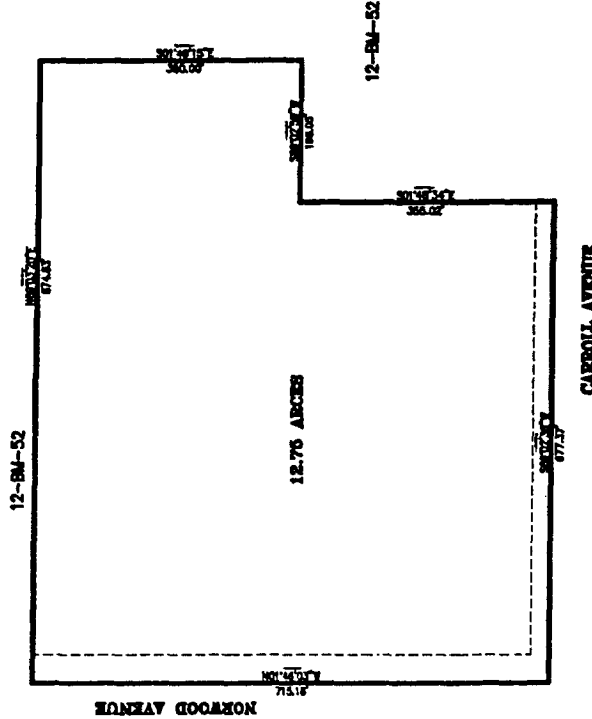
RESOLUTION NO.: 2001-030

DATE ADOPTED: JAN 16 2001

BOUNDARY MAP
ANNEXATION NO. 17 TO THE NEIGHBORHOOD
LANDSCAPING DISTRICT

CITY OF SACRAMENTO, COUNTY OF SACRAMENTO, CALIFORNIA
CARTER & BURGESS ENGINEERING
DECEMBER 11, 2000
SHEET 1 OF 1

FORED ROAD

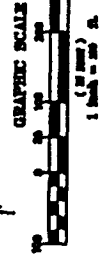


CARROLL AVENUE

12-BM-52

LEGEND

--- BOUNDARY LINE OF NEIGHBORHOOD



CHECKED AND CORRECTED
FILED IN THE OFFICE OF THE CITY CLERK OF THE COUNTY OF SACRAMENTO, STATE OF CALIFORNIA, THIS _____ DAY OF _____ 2000
CITY OF SACRAMENTO, CITY CLERK

CHECKED AND CORRECTED
I, _____, CITY CLERK, DO HEREBY CERTIFY THAT THE MAP WITHIN SHOWS THE PROPOSED BOUNDARY LINE OF THE NEIGHBORHOOD LANDSCAPING DISTRICT, CITY OF SACRAMENTO, COUNTY OF SACRAMENTO, STATE OF CALIFORNIA, AS APPROVED BY THE CITY COUNCIL OF THE CITY OF SACRAMENTO AT A MEETING THEREOF HELD ON THE _____ DAY OF _____ 2000, BY ITS RESOLUTION NUMBER _____.

CITY OF SACRAMENTO, CITY CLERK

CHECKED AND CORRECTED
FILED THIS _____ DAY OF _____ 2000 AT THE HOUR OF _____ P.M. IN THE OFFICE OF THE COUNTY RECORDER OF THE COUNTY OF SACRAMENTO, STATE OF CALIFORNIA.

COUNTY RECORDER OF THE COUNTY OF SACRAMENTO, CALIFORNIA

BY: _____

FOR CITY CLERK USE ONLY

RESOLUTION NO.: 2001-030

DATE ADOPTED: JAN 16 2001

EXHIBIT B

DESCRIPTION OF SERVICES AND OF IMPROVEMENTS TO BE MAINTAINED

The Services to be provided within the area to be annexed to the District are described as follows:

Furnish all tools, equipment, apparatus, facilities, labor, material, supplies and utilities necessary or desirable to maintain and service the landscape improvements as shown on Exhibit B-1, and more particularly described on plans and specifications approved by the City of Sacramento on file at the City of Sacramento, Department of Neighborhood Services, 1231 I Street, Room 400, Sacramento CA 95814.

The improvements to be maintained generally consist of masonry walls, landscaping and irrigation systems for the landscape areas within or adjacent to the residential subdivision or subdivisions identified on Exhibit B-1. Maintenance of said improvements shall include, but not be limited to periodic mowing of grass, trimming of trees and shrubs, and fertilizing, together with the regular furnishing of water for irrigation of plant material, and the repair, maintenance and replacement of the irrigation system, planted materials, and amenities. Maintenance of masonry walls includes periodic repair, as may be required.

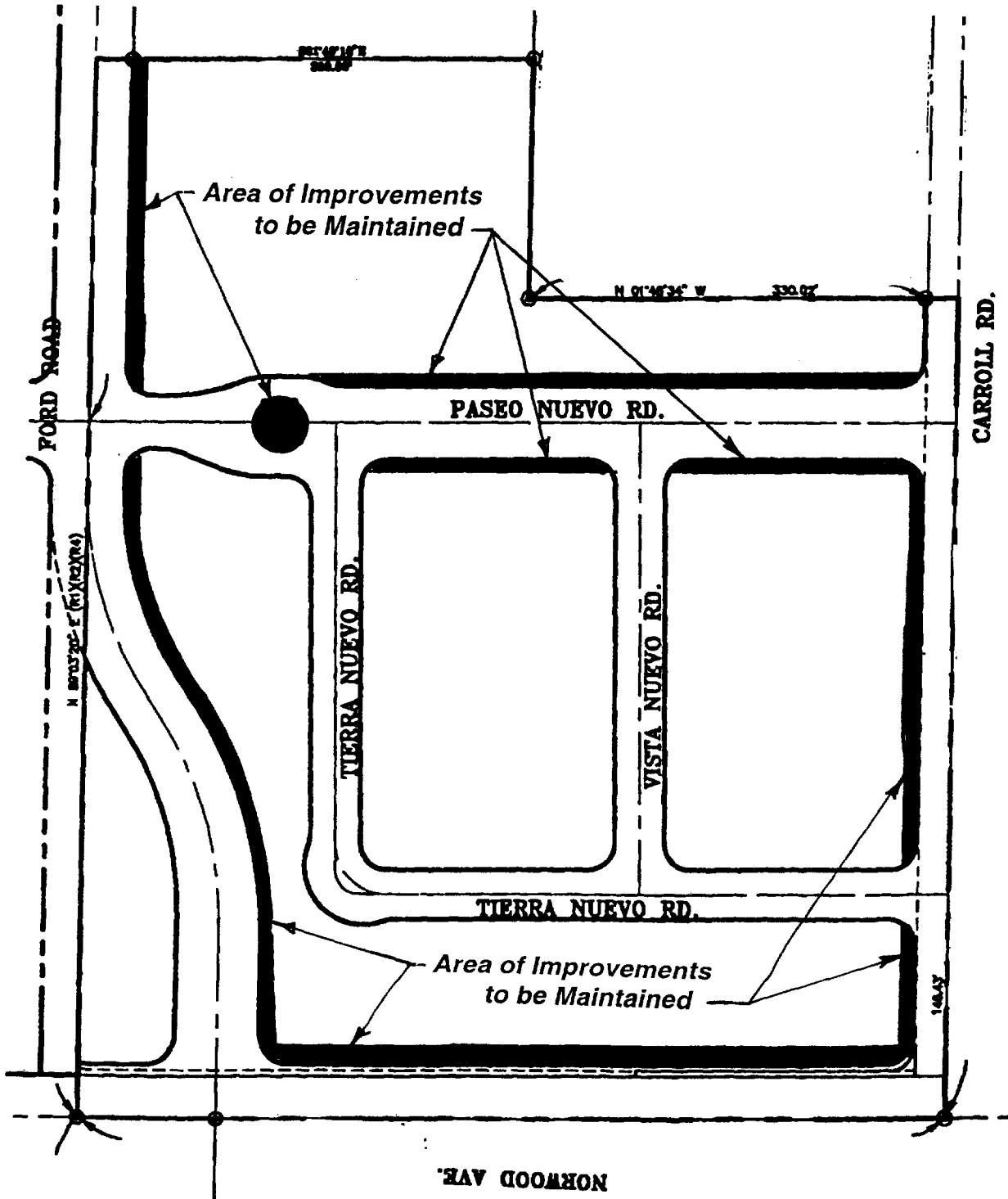
S:\bill\assess\submaint annex17 map resol

FOR CITY CLERK USE ONLY

RESOLUTION NO. 2001-030

DATE ADOPTED: JAN 16 2001

EXHIBIT B-1
IMPROVEMENTS TO BE MAINTAINED
ANNEXATION NO. 17 TO THE
NEIGHBORHOOD LANDSCAPING DISTRICT



FOR CITY CLERK USE ONLY

RESOLUTION NO.: 2001-030

DATE ADOPTED: JAN 16 2001