

USE BLACK INK BALL POINT PEN — PRESS FIRMLY
SIGN PERMIT APPLICATION

INSF 3-44

ASSEMBLY NO. 1548 PLS 12PK WAY PERMIT NO. 00140533

ADDRESS 225 N K CUC CITY SACRAMENTO COUNTY SACRAMENTO ZIP 95811

PERMIT TYPE REPAIR SIGN INFORMATION

SIGN BOARD INTERIOR LIGHT SINGLE FLYER
 ILLUMINATED SIGN NOT ILLUMINATED BILT BOARD - SIGN DIVISION
 INDIVIDUAL LETTERS PAPER LETTERS LED DOUBLE LETTER
 SPECIAL DODI VEHICLE LETTER
 PER SIGN ADVERTISING VEHICLE LETTER BOARD
 WORKMAN PROJECT SIGN RECEIPT

SIGN BOARD INFORMATION: 5-21412
 SIGN BOARD TYPE: REPAIR
 SIGN BOARD COLOR: RED
 SIGN BOARD FINISH: SMOOTH
 SIGN BOARD WEIGHT: 12.11 LB LENGTH 181-6"
 SIGN BOARD WIDTH: 18.5 SIGN BOARD HEIGHT: FT
 SIGN BOARD AREA: 223.8 SQ FT
 SIGN BOARD PERMITS: 1 PERMITS
 SIGN BOARD COST: 248 DOLLARS
 SIGN BOARD TYPE: REPAIR
 SIGN BOARD FINISH: SMOOTH
 SIGN BOARD WEIGHT: 12.11 LB LENGTH 181-6"
 SIGN BOARD WIDTH: 18.5 SIGN BOARD HEIGHT: FT
 SIGN BOARD AREA: 223.8 SQ FT
 SIGN BOARD PERMITS: 1 PERMITS
 SIGN BOARD COST: 248 DOLLARS

CITY OF SACRAMENTO PERMIT SERVICES
 BUILDING INSPECTION DIVISION 264 7619
 12-7-00
 D. Raolin

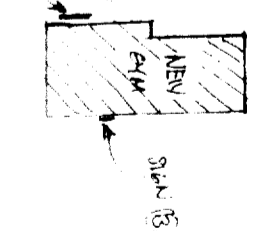
00140533
 12-7-00

TOTAL FEE \$
 248

12-7-00

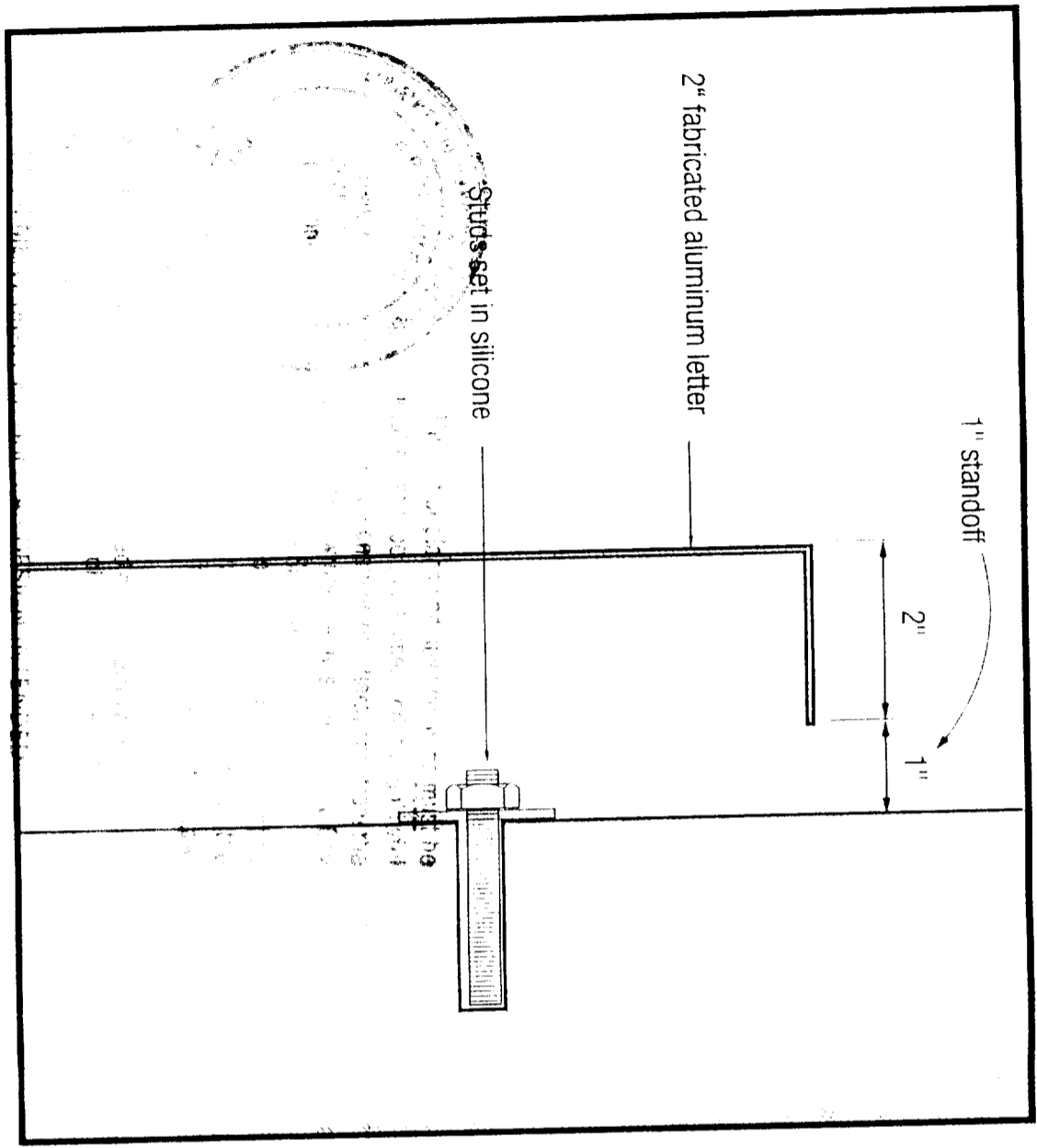


1051 46th Avenue
 Oakland, CA 94601
 Phone 510.533.7693
 Fax. 510.533.0815
 Lic. #314794



Job Name Sacramento Kings
 Address Arco Arena
 City Sacramento CA
 Date 11-21-00
 Designer Neil Reed
 Design By HOOKIN
 Design Date 01147
 Filename Sac King Sign
 Sheet 1

Customer: APPROVED
 REVISION: DATE: DATE: DATE:



Mounting Detail

full scale

2" deep fabricated letter



Building Entry Identification



This is an original unaltered drawing prepared by Arrow Sign Co. as a sign engineer. Any reproduction, in whole or in part, without the written consent of Arrow Sign Co. is prohibited. Arrow Sign Co. is not responsible for any errors or omissions.



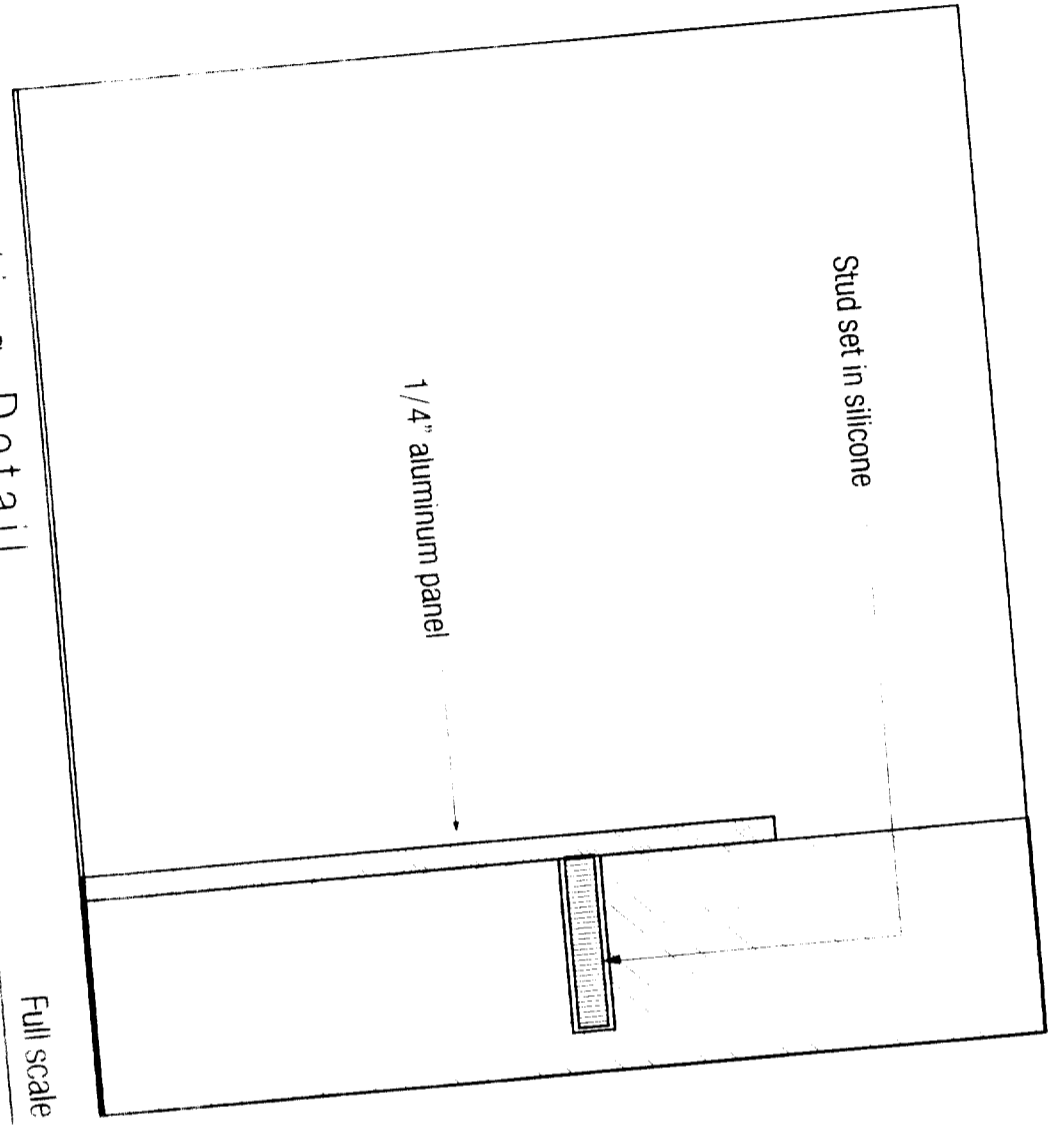
1051 46th Avenue
 Oakland, CA 94601
 Phone 510.533.7693
 Fax 510.533.0815
 Lic. #314794

Job Name Sacramento Kings
Address Arco Arena
 Sacramento, CA
City:
Date 11-21-00
Sales Neil Febus
Design G Hopkins
Design 01147
Filename Sac Kings Sign
Sheet 9

Customer Approval

REVISED	DATE	DESCRIPTION

We or our supplier, authorized drawing prepared for use by Arrow Sign Co. and
 information required for new business. It is not to be shown, copied, altered, or
 otherwise used in any way without the express written consent of Arrow Sign Co.

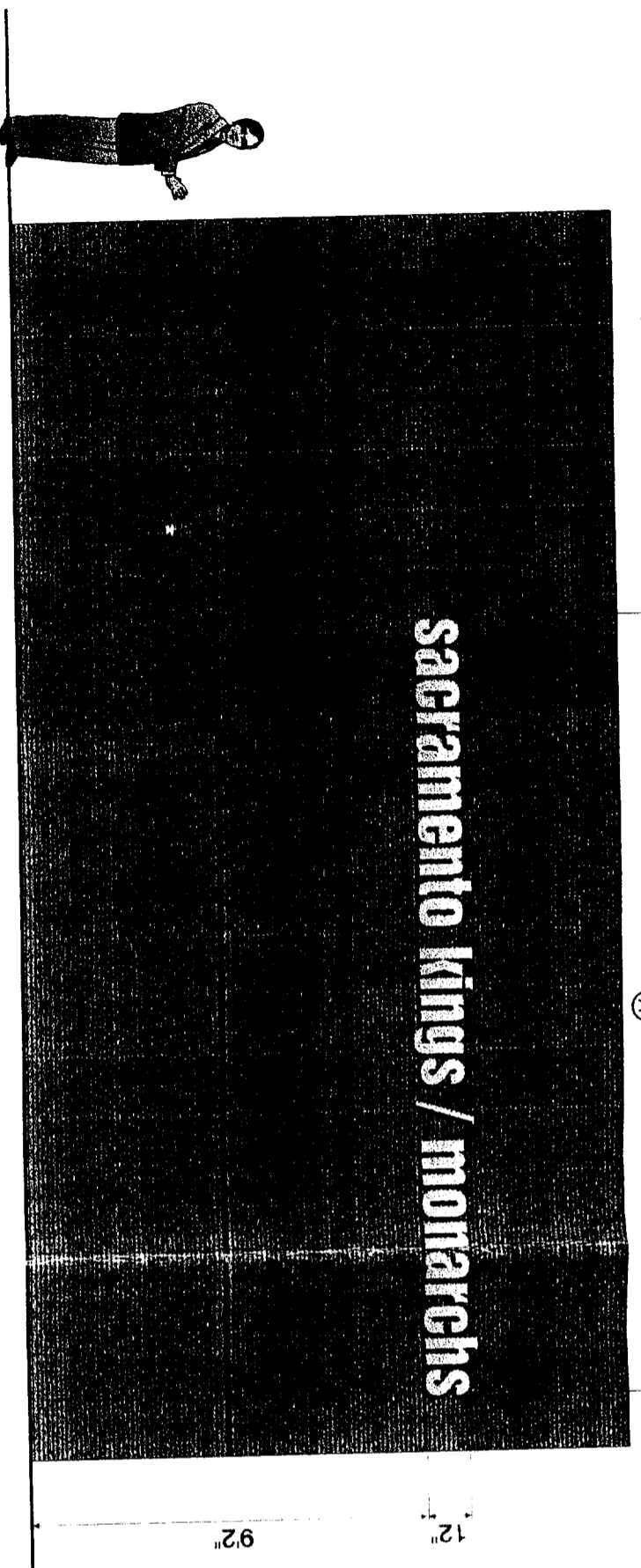


Mounting Detail
 FC0 Letters with studs

B

Directional Sign

Scale : 1/4" = 1'-0"



(B) (C)

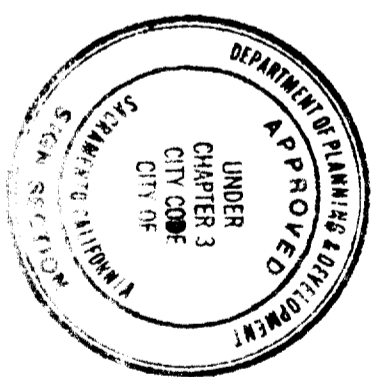
Face View

Scale : 1/4" = 1'-0"

8'-0"

14'-0"

End View



(A) Building Entry Identification
 Manufacture & install one (1) set of fabricated aluminum non-illuminated letters.
 090 aluminum returns (2" depth) .125 letter faces with brushed finish (vertical grain)
 Letters blind stud mounted to prefinished metal wall. 1" projection from surface
 Attachment method to metal TBD.

This set of plans and specifications must be kept on the job at all times and it is unlawful to make any changes or alterations from the same without written permission from the City of Sacramento Sign Section
 The approval of this plan and specification SHALL NOT BE held to prevent or delay the work of any other contractor.

All other work not shown on these plans shall be in accordance with the City of Sacramento Sign Section specifications.
 ALL INSTALLATIONS ARE SUBJECT TO THE CITY OF SACRAMENTO SIGN SECTION APPROVAL.

B Wall Signs

Manufacture & install two (2) new single-faced wall displays

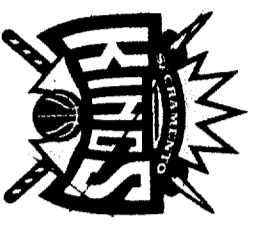
Signs fabricated with (96) aluminum skins over 1/2" aluminum angle frame.
 Paint aluminum faces white paint 3" returns black
 Team logos c/o from 250 aluminum sheet. Digital image printed graphics on vinyl applied to aluminum.
 Logos are blind stud mounted to backgrounds 1" from surface.
 Provide hooks on bottom of sign panels for temporary attachment of banner.
 Verify type and size of hooks. 3 hooks are shown. Size of banner (8ft).
 Banner material could be sewn with hem/sleeve @ top for insertion of metal end
 stake over hooks on bottom of signs. Banner material would require cut out
 for access to hooks.

Approved with changes noted

Peter Micsoldrick

TA 1180 r1 00.cdr

in partnership with
PEPSI
SPORTS DAY CAMP



Tubeart
 Signs & Sports Displays

4243-A SE International Way
 Milwaukie, OR 97222
 TEL 503 653 1133
 USA 1-800-562-2854
 FAX 503 659 9191

Sacramento Kings Monarchs
 Peter Micsoldrick
 KEVIN TUCKER
 SALES PERSON

April 17, 2006

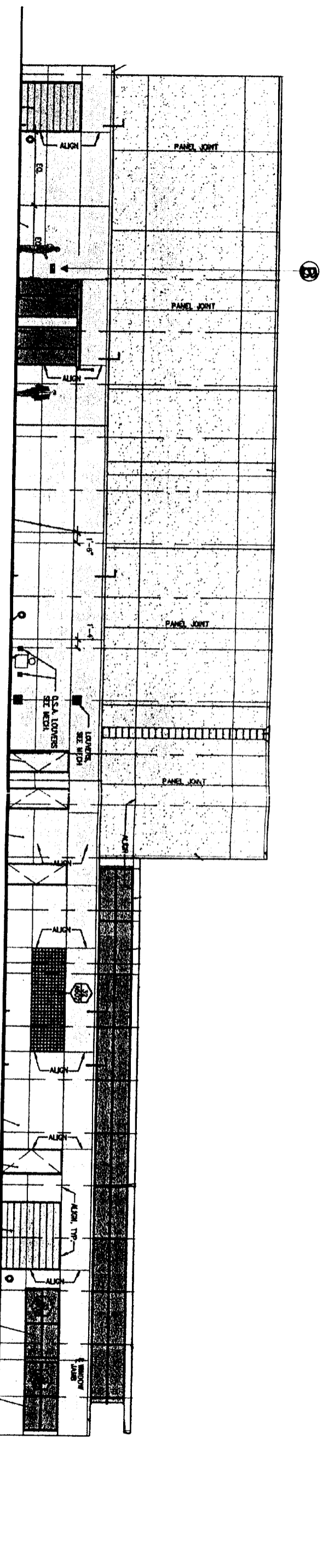
April 20, 2006



Sacramento Kings Monarchs Practice Facility, Sacramento, CA

This original drawing is protected under Federal Copyright Laws. Make no reproduction of this design without permission from Tubeart.

11.50 PM



NORTH ELEVATION
 SCALE: 1/16" = 1'-0"

16'



Manufacture & install one (1) new non-illuminated directional sign

Sign panel fabricated from .050 aluminum. Letters with beveled finish. Mount sign panel to wall with stainless steel screws. Paint surface to match PMB. Be purple. Mask and to 1/4" copy and secure stripe at bottom. Blind stud mount sign panel to wall surface adjacent to entry. Exact mounting position TPO with survey.

Scale: 1/16" = 1'-0"

Tubeart
 Signs & Sports Displays

4243-A SE International Way
 Milwaukie, OR 97222
 TEL 503 659 1133
 USA 1 800 562 2854
 FAX 503 659 9191

IA 1188 P1 00.cdr
 Peter McGoldrick

Sacramento Kings Monarchs

Kevin Tucker
 April 17, 2000

Approved
 Approved with changes noted



This original artwork is protected under Federal Copyright Laws. Make no reproduction of this design concept without permission from TubeArt.