

18



CITY OF SACRAMENTO

CITY PLANNING DEPARTMENT

725 "J" STREET

SACRAMENTO, CALIF. 95814

TELEPHONE (916) 449-5804

MARTY VAN DUYN

PLANNING DIRECTOR

May 28, 1981

City Council
Sacramento, California

APPROVED
BY THE CITY COUNCIL

*deny based on
7 of 7 due 6-16-81*

JUN 2 - 1981

Honorable Members in Session:

OFFICE OF THE
CITY CLERK

SUBJECT: Request for Post Subdivision Modification to waive standard curb, gutter, and sidewalk improvements along Elk Grove-Florin Road for Fruitridge Industrial Park Unit 3 (P-8756)

LOCATION: Northwest corner of Elder Creek Road and Elk Grove-Florin Road

SUMMARY

This is a request to waive curbs, gutters, and sidewalks along Elk Grove-Florin Road frontage for Fruitridge Industrial Park Unit 3. The Planning staff recommends denial of the request.

BACKGROUND INFORMATION

On October 23, 1979, the City Council approved a Tentative Map for the subject property. On April 8, 1981, the Council granted a Tentative Map Time Extension which extended the expiration date of the map to October 23, 1981.

The approval of the Tentative Map was conditional upon the provision of standard subdivision improvements of 88th Street, Elk Grove-Florin Road, and Elder Creek Road.

The applicant requests that the required street improvements, curbs, gutters and sidewalks, along Elk Grove-Florin Road frontage be waived.

The City Engineering Department has reviewed the project and recommends that standard street improvements be provided on the Elk Grove-Florin Road frontage. Drainage facilities are available in the area to accommodate the required facilities. If the street improvements are waived, future improvements of the street would be incurred by the City.

RECOMMENDATION

The staff recommends that the request for Post Subdivision Modification be denied.

Respectfully submitted,



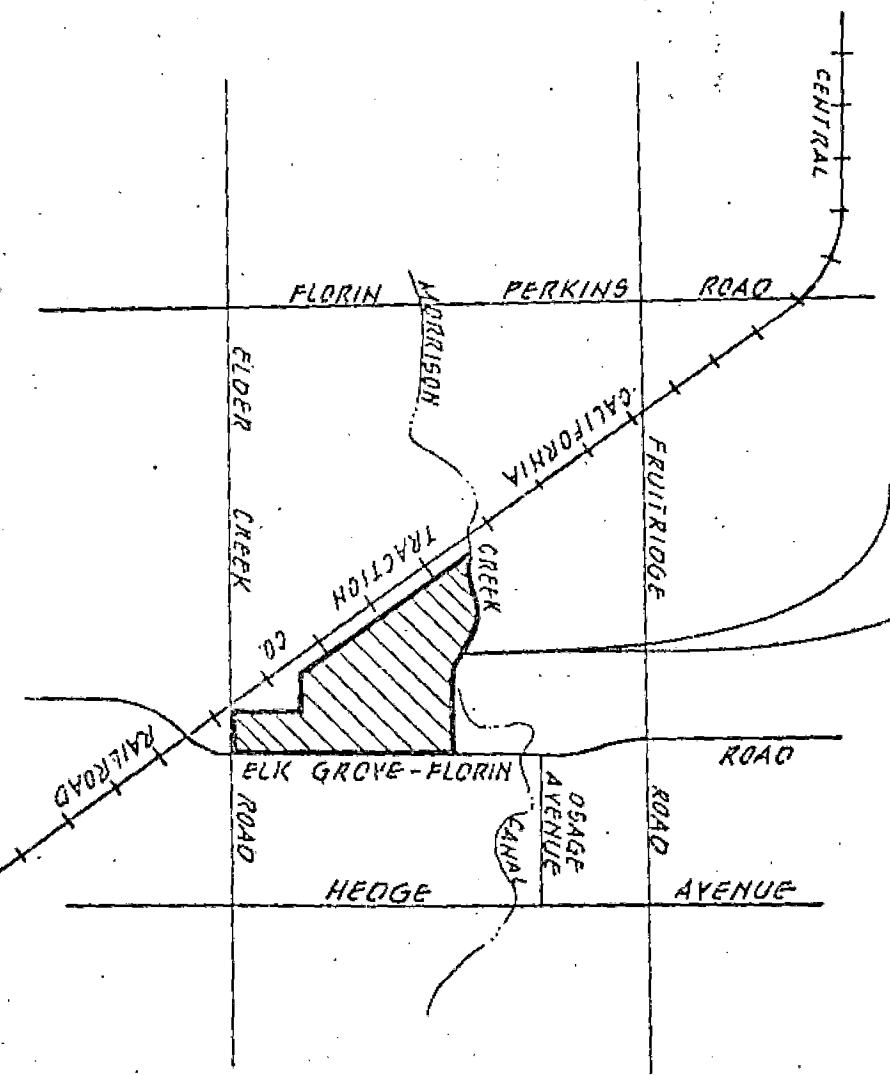
Marty Van Duyn
Planning Director

FOR CITY COUNCIL INFORMATION
WALTER J. SLIPE
CITY MANAGER

MVD:SD:jm
Attachments
P-8756

June 2, 1981
District No. 6

SITE



LOCATION MAP

NO SCALE

131

DATE

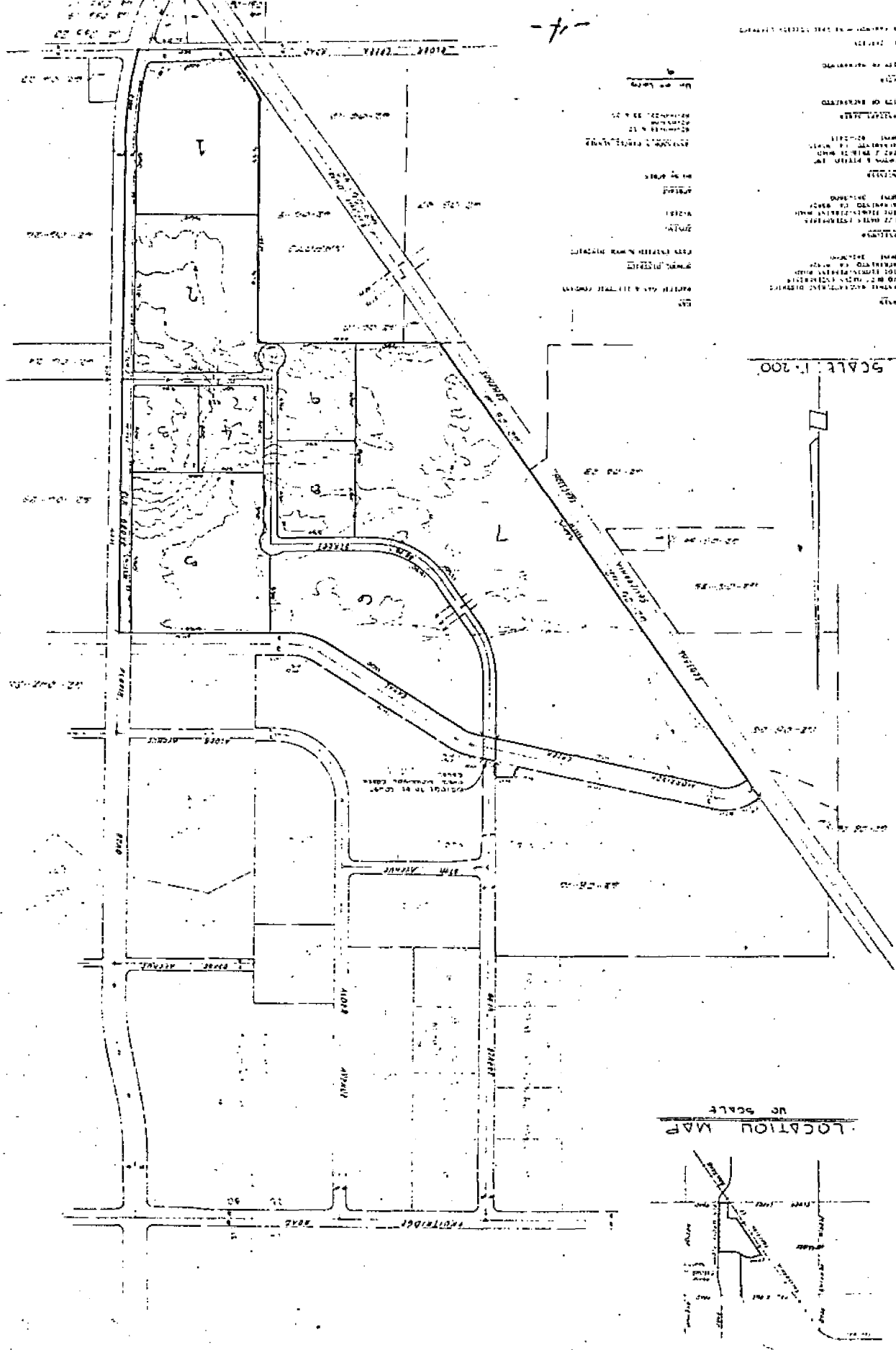
48756

Item # 21

September 27, 1979

-4-

THIS PLAN IS TO BE USED FOR THE CONSTRUCTION OF THE PROJECT DESCRIBED HEREIN. IT IS THE RESPONSIBILITY OF THE ENGINEER TO VERIFY THE ACCURACY OF THE DATA AND THE SUITABILITY OF THE DESIGN FOR THE INTENDED USE. THE ENGINEER DOES NOT WARRANT THE ACCURACY OF THE DATA OR THE SUITABILITY OF THE DESIGN FOR ANY OTHER USE. THE ENGINEER'S LIABILITY IS LIMITED TO THE DESIGN OF THE PROJECT DESCRIBED HEREIN. THE ENGINEER IS NOT RESPONSIBLE FOR THE CONSTRUCTION OF THE PROJECT OR FOR THE RESULTS THEREOF. THE ENGINEER'S SERVICES ARE LIMITED TO THE DESIGN OF THE PROJECT DESCRIBED HEREIN. THE ENGINEER IS NOT RESPONSIBLE FOR THE CONSTRUCTION OF THE PROJECT OR FOR THE RESULTS THEREOF.



LOCATION MAP
 NO SCALE

