



DEPARTMENT OF
PARKS AND RECREATION

PARK PLANNING, DESIGN &
DEVELOPMENT DIVISION

CITY OF SACRAMENTO
CALIFORNIA

1231 I STREET, #400
SACRAMENTO, CA
95814-2702

PH 916-264-8529
FAX 916-264-8266

May 12, 2005

City Council
Sacramento, California

Honorable Members in Session:

SUBJECT: APPROVE THE PARK MASTER PLAN TO INCLUDE A COMMUNITY GARDEN FOR J. NEELY JOHNSON PARK CIP (PN: LW01)

LOCATION AND COUNCIL DISTRICT: 516 11th Street, Sacramento
Council District 1

RECOMMENDATION:

This report recommends that Council, by resolution (page 4):

- Approve the Park Master Plan to include a community garden.

CONTACT PERSON: Janet Baker, Park Development Division Manager,
808-8234

FOR COUNCIL MEETING OF: May 31, 2005

SUMMARY:

J. Neely Johnson Park is an existing 1.17-acre neighborhood park located at 516 11th Street in downtown Sacramento. This report requests City Council's approval of the master plan to include a community garden.



COMMITTEE/COMMISSION ACTION:

The Citizen's Advisory Committee for Parks and Recreation approved the J. Neely Johnson master plan to include a community garden (Exhibit A, page 5) on September 30, 2004.

BACKGROUND INFORMATION:

J. Neely Johnson Park is an existing 1.17-acre neighborhood park located at 516 11th Street in Downtown Sacramento (see Exhibit B, page 6).

A public meeting was held on August 11, 2004 where City staff presented the community with the revised park master plan showing the community garden addition. City staff also reviewed the following City of Sacramento community gardens related information including rules and procedures, waiver and liability of release form and registration / plot lease forms with the community. The community approved amending the J. Neely Johnson Park master plan to include a community garden on August 11, 2004.

FINANCIAL CONSIDERATIONS:

There will be an additional \$440 per year in ongoing operational and maintenance cost, which includes \$330 per year in park maintenance and \$110 per year in water and utility costs.

The Neighborhood Park Maintenance Community Facilities District (CFD) was established to reduce reliance on the general fund for neighborhood park maintenance and to preserve the level of maintenance in the parks system. It was projected that revenues from the CFD would provide approximately 65-70% of the cost associated with maintaining new neighborhood parks for those areas that annex to the District.

Since some areas have not annexed to the District, the percentage of costs covered will fall below the 65-70% level. The balance of costs must be borne by the Citywide Landscape and Lighting District and other city funds. It is anticipated that significant revenues from the CFD will begin in 2005. In the meantime, maintenance funds must be derived from other sources.

Existing parks and all community parks, regional parks, open space, trails and buffer areas are not covered by the CFD.

ENVIRONMENTAL CONSIDERATIONS:

The Development Services Department, Environmental Planning Services Division has reviewed this project for compliance with the requirements of the California Environmental Quality Act (CEQA) and determined that the project is exempt under Class 1, Section number 15301(d) Restoration or rehabilitation of deteriorated or damaged structures to meet current standards of public health and safety; Class 2, Section number 15303(e) New construction of an accessory structure (fence); Class 4, Section number 15304(b) New gardening and landscaping and Class 11, Section number 15311(a) Construction of on-premise signs.

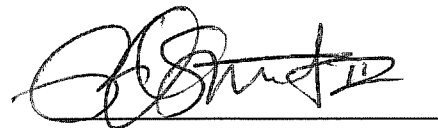
POLICY CONSIDERATIONS:

This action is consistent with City Council's goal to expand park and recreational opportunities.

ESBD EFFORTS:

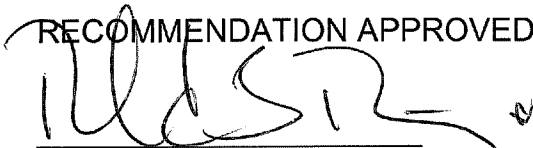
The selection of landscape architect consultants and contractors for this project will follow City established guidelines for inclusion of ESBD firms.

Respectfully submitted,



ROBERT G. OVERSTREET,
Director, Parks and Recreation

RECOMMENDATION APPROVED:



ROBERT P. THOMAS
City Manager

TABLE OF CONTENTS

1. Resolution, page 4.
2. Exhibit A – Master Plans, page 5.
3. Exhibit B – Area Map, page 7.

RESOLUTION NO.

ADOPTED BY THE CITY OF SACRAMENTO

ON DATE: _____

**RESOLUTION TO APPROVE THE PARK MASTER PLAN TO INLCUDE A
COMMUNITY GARDEN FOR J. NEELY JOHNSON PARK
CIP (PN: LW01)**

WHEREAS, Resolution 2004-400, dated May 25, 2004 approved the 2004 Parks and Recreation Programming Guide that included the addition of new elements to J. Neely Johnson Park as determined by the new master plan;

**NOW, THEREFORE BE IT RESOLVED BY THE SACRAMENTO CITY COUNCIL
THAT:**

The City Council, hereby:

1. Approves the J. Neely Johnson Park master plan to include a community garden.

MAYOR

ATTEST:

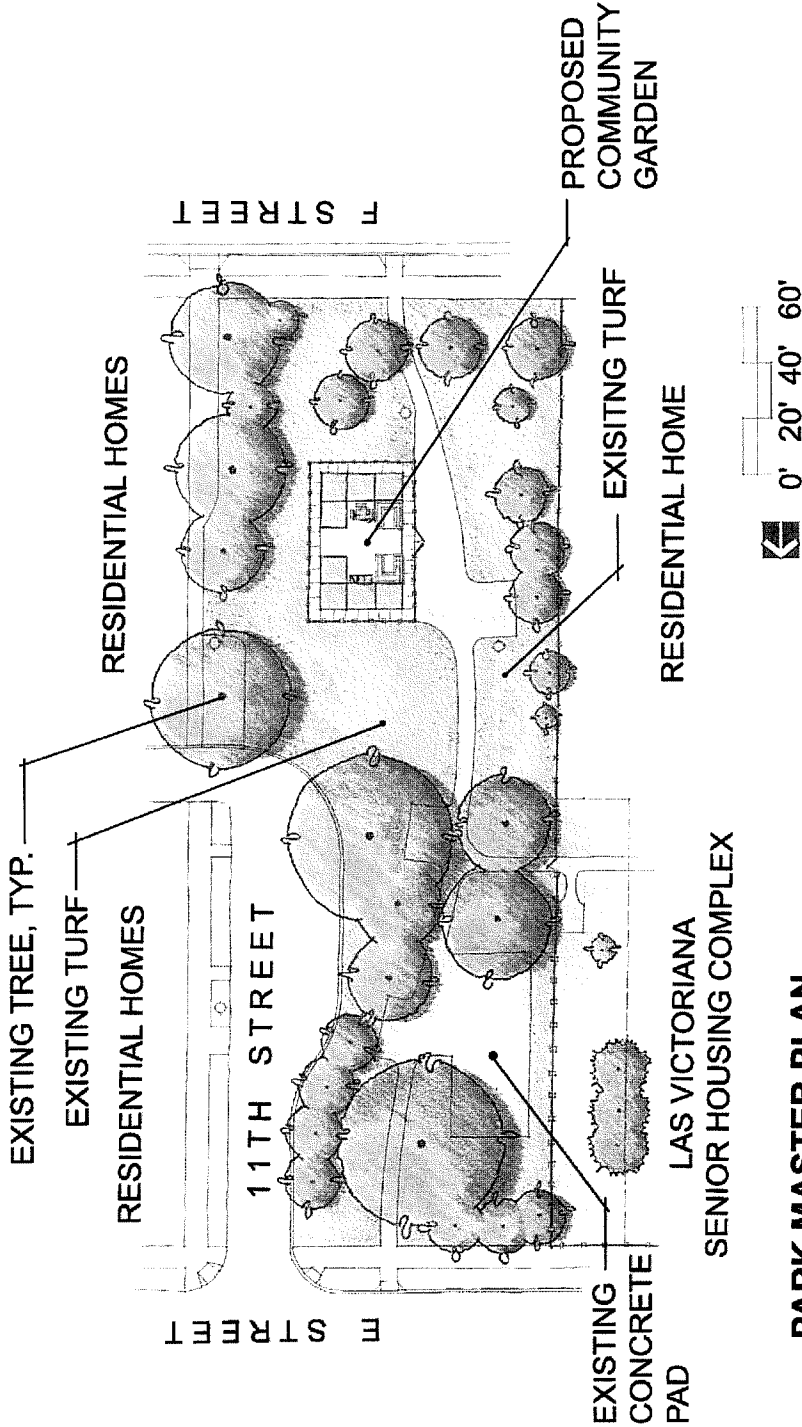
CITY CLERK

FOR CITY COUNCIL USE ONLY

RESOLUTION NO.: _____

DATE ADOPTED: _____

EXHIBIT A



PARK MASTER PLAN
SCALE: 1"=20'-0"

J NEELY JOHNSON PARK (1.17 AC.)

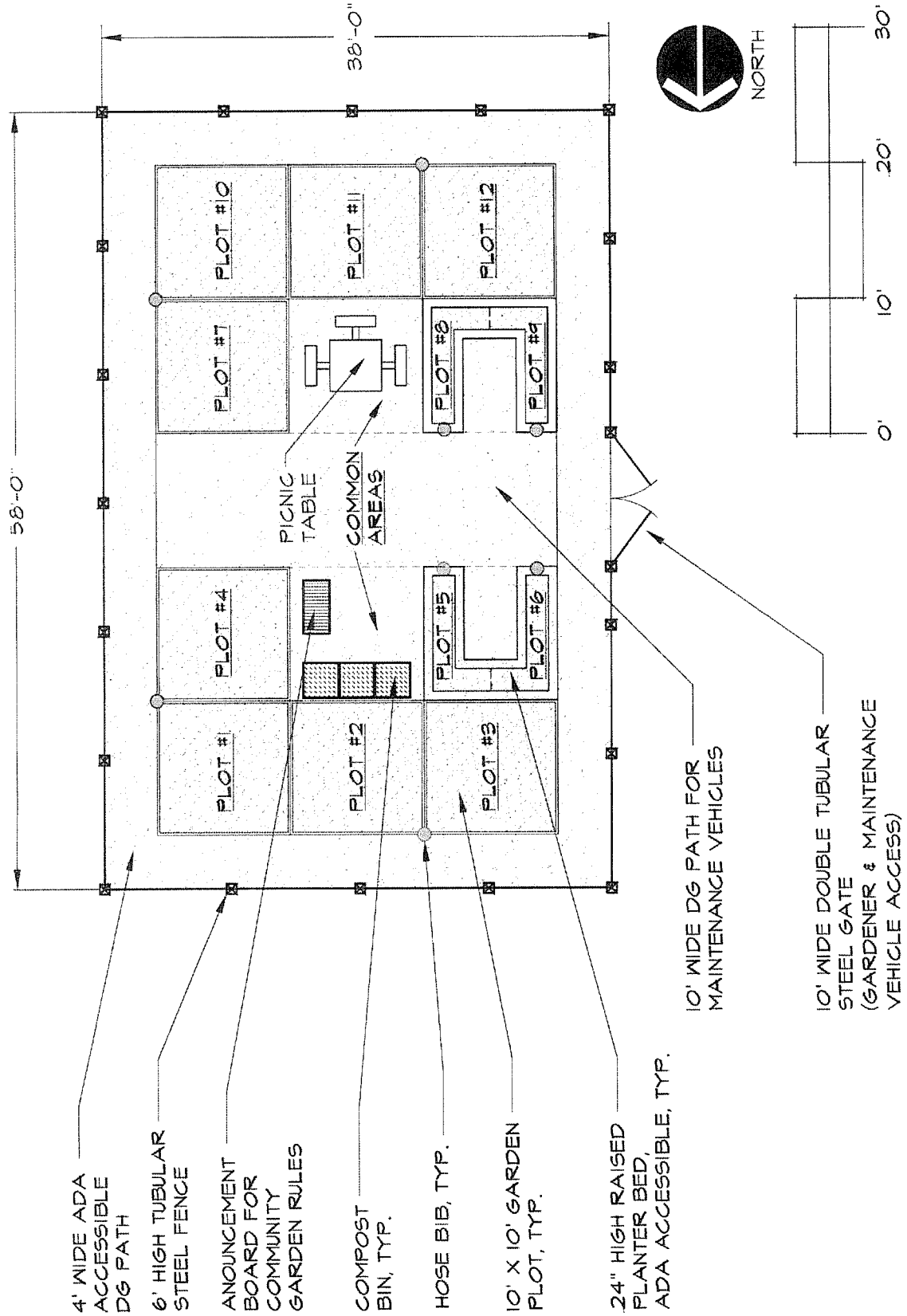
P A R K M A S T E R P L A N

CITY OF SACRAMENTO
DEPARTMENT OF PARKS AND RECREATION
LANDSCAPE ARCHITECTURE SECTION

DATE: AUGUST 2, 2004

5

EXHIBIT A



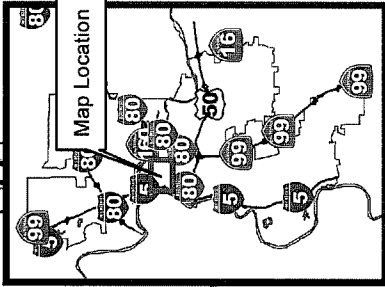
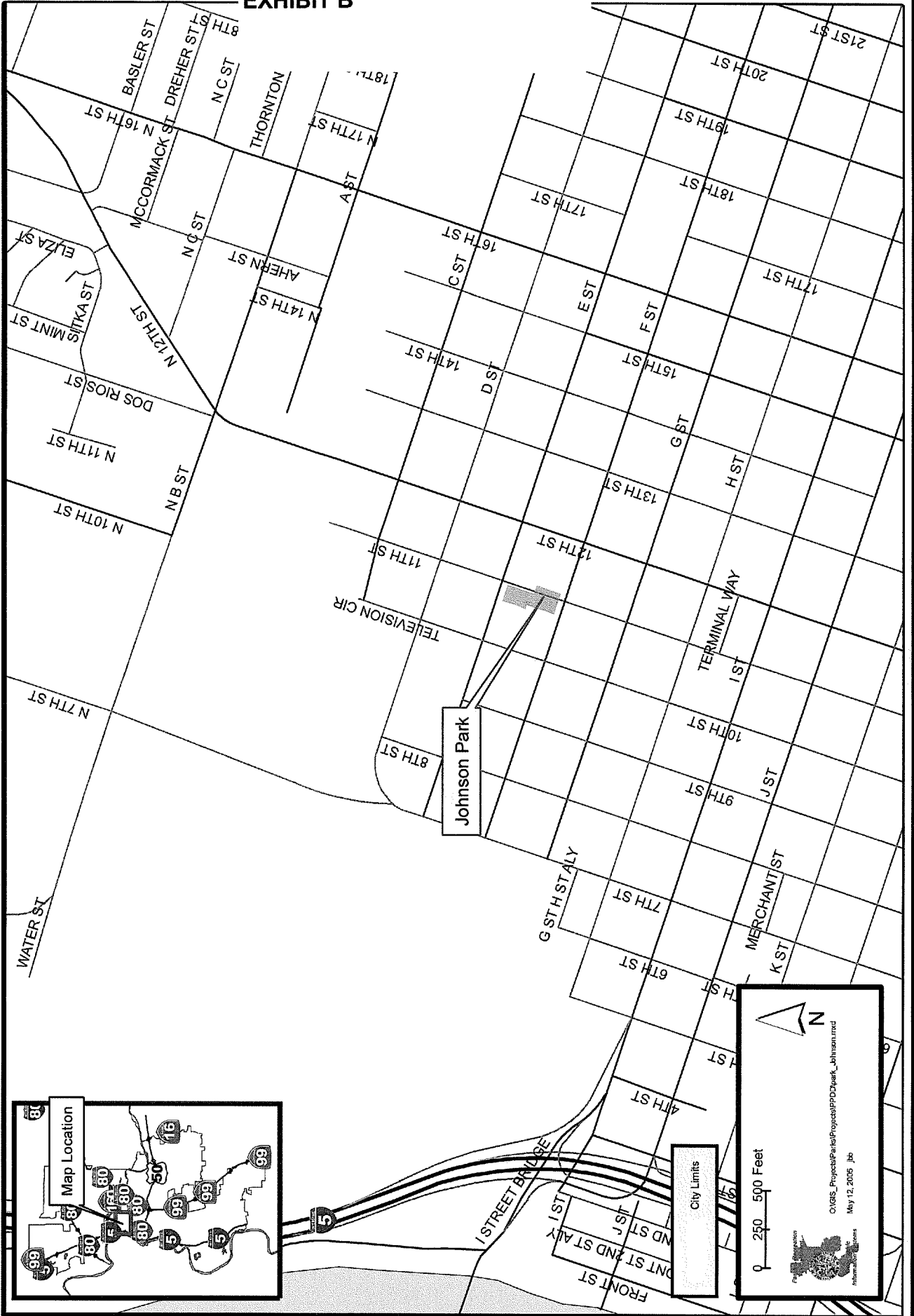
ENLARGED COMMUNITY GARDEN PLAN

SCALE: 1" = 10'-0"

City of Sacramento
Department of Parks and Recreation

Johnson Park

EXHIBIT B



City Limits

0 250 500 Feet

CGIS_Projects\Parks\Projects\PPDD\year Johnson.mxd
May 12, 2005 jib