



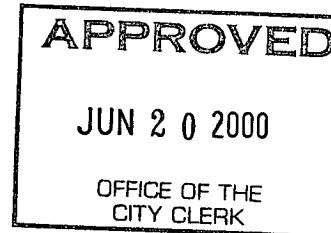
1.13

DEPARTMENT OF
PUBLIC WORKS

CITY OF SACRAMENTO
CALIFORNIA

DEVELOPMENT SERVICES
1231 I STREET
ROOM 200
SACRAMENTO, CA
95814
PH 916-264-7995
FAX 916-448-8450

TECHNICAL SERVICES DIVISION



May 30, 2000

City Council
Sacramento, California

Honorable Members In Session:

SUBJECT: APPROVAL OF FINAL PARCEL MAP ENTITLED "RIVER PLAZA - 2" - (P99-120)

LOCATION/COUNCIL DISTRICT:

2200 River Plaza Drive
Council District 1

RECOMMENDATION:

This report recommends that the attached resolution for the Final Parcel Map for River Plaza - 2 be approved.

CONTACT PERSON:

Bob Robinson, Land Surveyor, 264-8970

FOR COUNCIL MEETING OF:

June 20, 2000

SUMMARY:

On December 9, 1999, the Planning Commission approved a Tentative Parcel Map by adopting a Notice of Decision. All conditions of the tentative parcel map have been met by the subdivider, California Farm Bureau Federation, a California Non-Profit Corporation and River Plaza Partners I, LLC, a California Limited Liability Company. The Final Parcel Map requires approval by the City Council.

COMMITTEE/COMMISSION ACTION:

None.

City Council
Final Parcel Map (P99-120)
May 30, 2000

BACKGROUND:

On December 9, 1999, the Planning Commission approved a Tentative Parcel Map by adopting Notice of Decision.

Pursuant to Sacramento City Code, Chapter 40.08.813, and Government Code Section 66458, the City Council may, by resolution, approve final maps. The map presented conforms to all the requirements of the Government Code and Title 16 of the City Code, applicable at the time of conditional approval of the Tentative Parcel Map. The Final Parcel Map is consistent with the South Natomas Community Plan. All conditions in the staff subdivision report have been met and the Final Parcel Map is presented for approval.

FINANCIAL CONSIDERATIONS:

All subdivision costs are being paid by the subdivider, California Farm Bureau Federation, a California Non-Profit Corporation and River Plaza Partners I, LLC, a California Limited Liability Company.

ENVIRONMENTAL CONSIDERATIONS:

On December 9, 1999, the Planning Commission adopted Notice of Decision ratifying the Negative Declaration and approving the mitigation monitoring plan for this project.

POLICY CONSIDERATIONS:

Pursuant to Sacramento City Code, Chapter 40.08.858, and Government Code Section 66458, the City Council may, by resolution, approve final maps. The map presented conforms to all the requirements of the Government Code and Title 16 of the City Code, applicable at the time of conditional approval of the Tentative Parcel Map.

City Council
Final Map (P99-120)
May 30, 2000

ESBD CONSIDERATIONS:

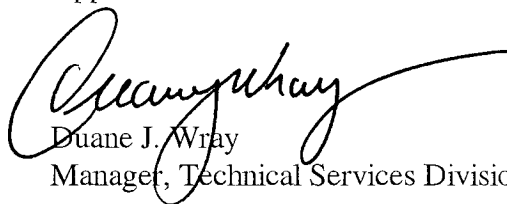
City Council adoption of the resolution is not affected by City policy related to the ESBD Program.

Respectfully submitted,



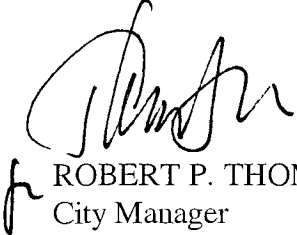
Gary Alm,
Manager, Development Services

Approved:



Duane J. Wray
Manager, Technical Services Division

RECOMMENDATION APPROVED:



ROBERT P. THOMAS
City Manager

Approved:



Michael Kashiwagi
Director of Public Works

BR:me

S:\SWrkGrp\dev\svc\council\P99-120 River Plaza2\cltr
0530.00

RESOLUTION NO. 2000-344



ADOPTED BY THE SACRAMENTO CITY COUNCIL

ON DATE OF _____

APPROVING FINAL PARCEL MAP ENTITLED "RIVER PLAZA - 2" (P99-120)

WHEREAS, THE COUNCIL OF THE CITY OF SACRAMENTO FINDS AND DETERMINES AS FOLLOWS:

- A. The Final Parcel Map entitled "River Plaza - 2", located at 2200 River Plaza Drive, with provisions for its design and improvement, is consistent with the South Natomas Community Plan. See Exhibit "A-1 and A-2" for project location.
- B. The Final Parcel Map is in substantial compliance with the previously approved tentative parcel map.

NOW, THEREFORE, BE IT RESOLVED BY THE COUNCIL OF THE CITY OF SACRAMENTO AS FOLLOWS:

- 1. The Final Parcel Map is hereby approved.

MAYOR

ATTEST:

CITY CLERK

S:\TSWrkGrp\devsvcl\council\P99-120\RiverPlaza2\cckr
0530.00

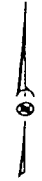
FOR CITY CLERK USE ONLY

RESOLUTION NO.: _____

DATE ADOPTED: _____

EXHIBIT "A-1"

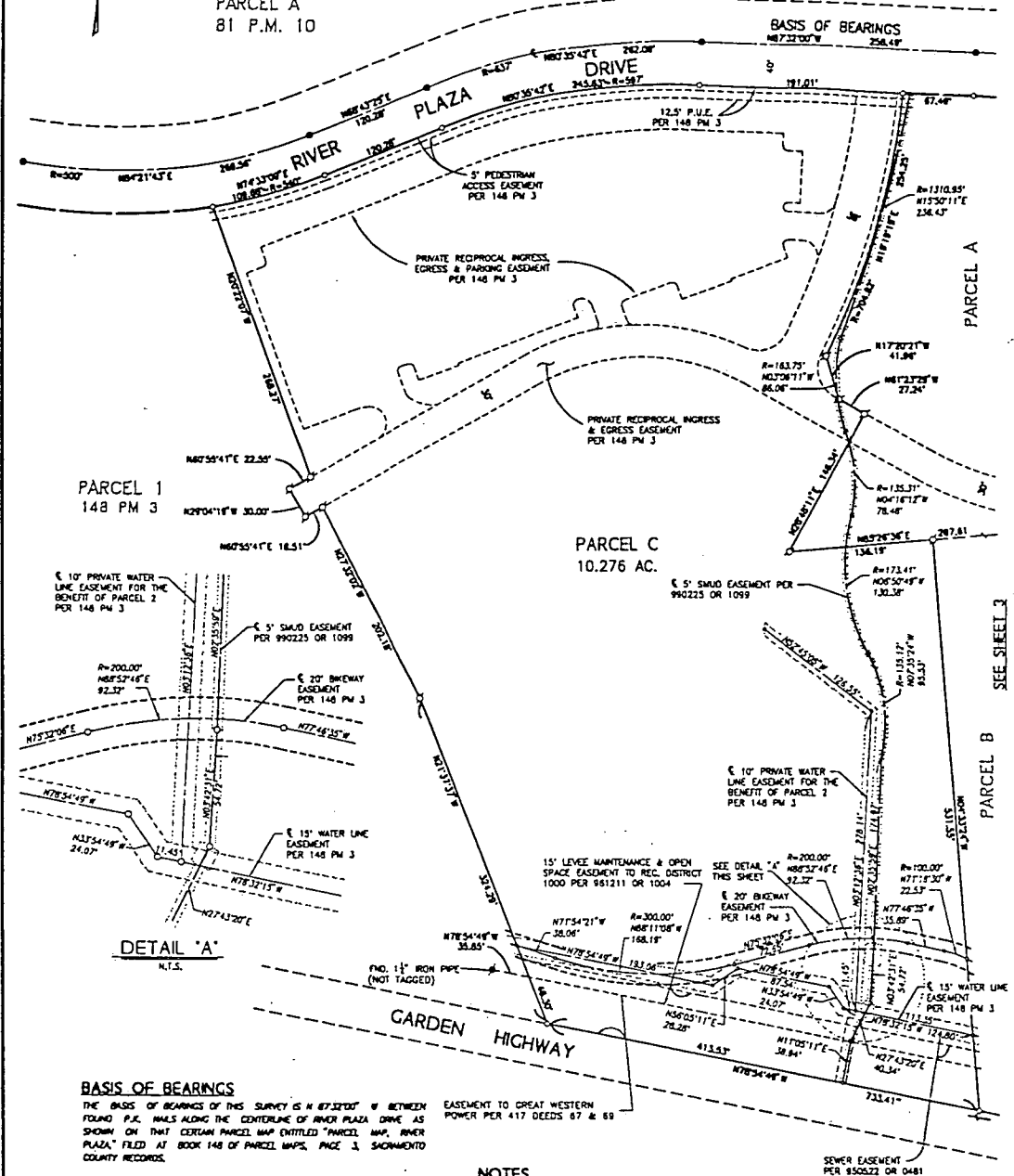
PARCEL MAP
RIVER PLAZA - 2
 PARCELS 2 & 3 OF 148 P.M. 3
 LOCATED IN SECTION 26 & 27, T.9 N., R.4 E., M.D.M.
 CITY OF SACRAMENTO, CALIFORNIA
 MAY, 2000 SCALE: 1" = 60'
 MORTON & PITALO, P.C.
 SHEET 1 OF 2 SHEETS



PARCEL A
 81 P.M. 10

PARCEL 1
 148 PM 3

PARCEL C
 10.276 AC.



BASIS OF BEARINGS
 THE BASIS OF BEARINGS OF THIS SURVEY IS N 87.3200° W BETWEEN FOUND P.C. NAILS ALONG THE CENTERLINE OF RIVER PLAZA DRIVE AS SHOWN ON THAT CERTAIN PARCEL MAP ENTITLED "RIVER PLAZA" FILED AT BOOK 148 OF PARCEL MAPS, PAGE 3, SACRAMENTO COUNTY RECORDS.

EASEMENT TO GREAT WESTERN POWER PER 417 DEEDS 87 & 88

NOTES

1. DISTANCES ALONG CURVED LINES ARE CHORD MEASUREMENTS.
2. PRIVATE RECIPROCAL DRAINAGE EASEMENTS SHALL BE DESIGNATED WITH THE SALE OF EACH PARCEL.
3. EASEMENT GRANTED TO PACIFIC TELEPHONE & TELEGRAPH CO. RECORDED IN BOOK 1488 AT PAGE 402 MAY AFFECT THIS SUBMISSION. THIS DESCRIPTION IS NOT SUFFICIENT TO ALLOW SAID EASEMENT TO BE LOCATED.
4. PRIVATE EASEMENTS FOR INGRESS AND EGRESS EASEMENTS ARE STIPULATED IN THE COVENANTS, CONDITIONS AND RESTRICTIONS RECORDED IN BOOK 891015 O.R. 003.

LEGEND

- DIMENSION POINT, NOTHING FOUND OR SET
- FOUND P.C. NAIL
- ⊕ SET 5/8" IRON NAGGED L.S. 3/8x3
- ⊙ FOUND MONUMENT AS DESCRIBED HEREON
- PUBLIC UTILITY EASEMENT
- CENTER LINE

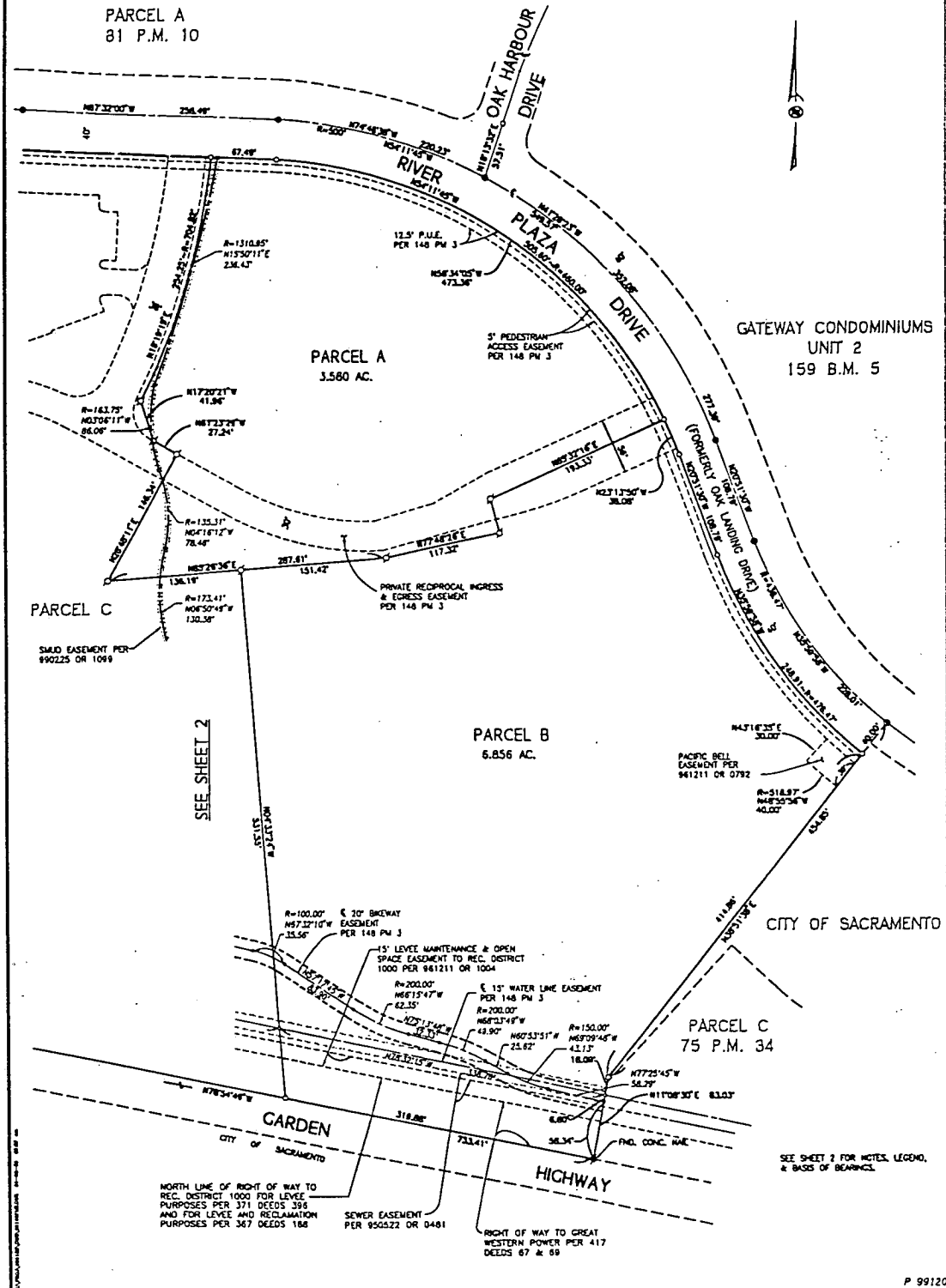
P 99120

FOR CITY CLERK USE ONLY

RESOLUTION NO: _____
 DATE ADOPTED: _____

EXHIBIT "A-2"

PARCEL MAP
RIVER PLAZA - 2
 PARCELS 2 & 3 OF 148 P.M. 3
 LOCATED IN SECTION 26 & 27, T.9 N., R.4 E., M.D.M.
 CITY OF SACRAMENTO CALIFORNIA
 MAY, 2000 SCALE: 1" = 60'
 MORTON & PITALO, INC.
 SHEET 2 OF 2 SHEETS



FOR CITY CLERK USE ONLY

RESOLUTION NO: _____

DATE ADOPTED: _____